

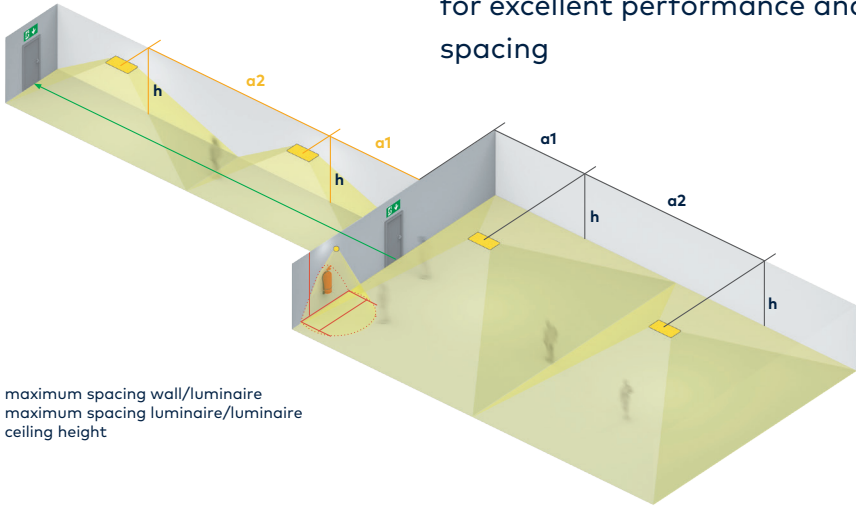
# Voyager

## Escape

[www.thornlighting.com/VOYE](http://www.thornlighting.com/VOYE)



Efficient, high power LED self-contained emergency luminaire for excellent performance and spacing



**a1** = maximum spacing wall/luminaire  
**a2** = maximum spacing luminaire/luminaire  
**h** = ceiling height

### VOYAGER ESCAPE

h	antipanic (0,5 lx)	
	a1	a2
2,50	2,20	5,80
3,00	2,45	6,40
3,50	2,70	7,00
4,00	2,90	7,65
4,50	3,05	8,20
5,00	3,15	8,80

### VOYAGER ESCAPE

h	escape (1 lx)	
	a1	a2
2,50	2,70	6,20
3,00	2,95	6,90
3,50	3,10	7,60
4,00	3,20	8,10
4,50	3,05	8,55
5,00	2,55	8,85

All values in metres, all values for  $t_a = 30\text{ }^\circ\text{C}$ , maintenance factor = 0.8