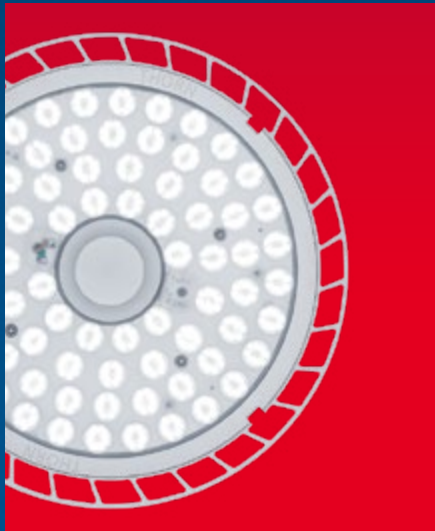


# THORN

LIGHTING



# BRAND NEW

PRODUCT FOCUS EDITION 2/2018



**KATONA**



**VOYAGER STAR\***



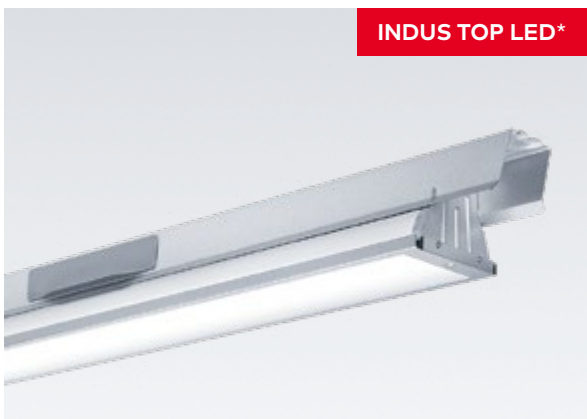
**HIPAK**



**BETA 2**



**CHALICE 74**



**INDUS TOP LED\***



**VOYAGER ONE\***

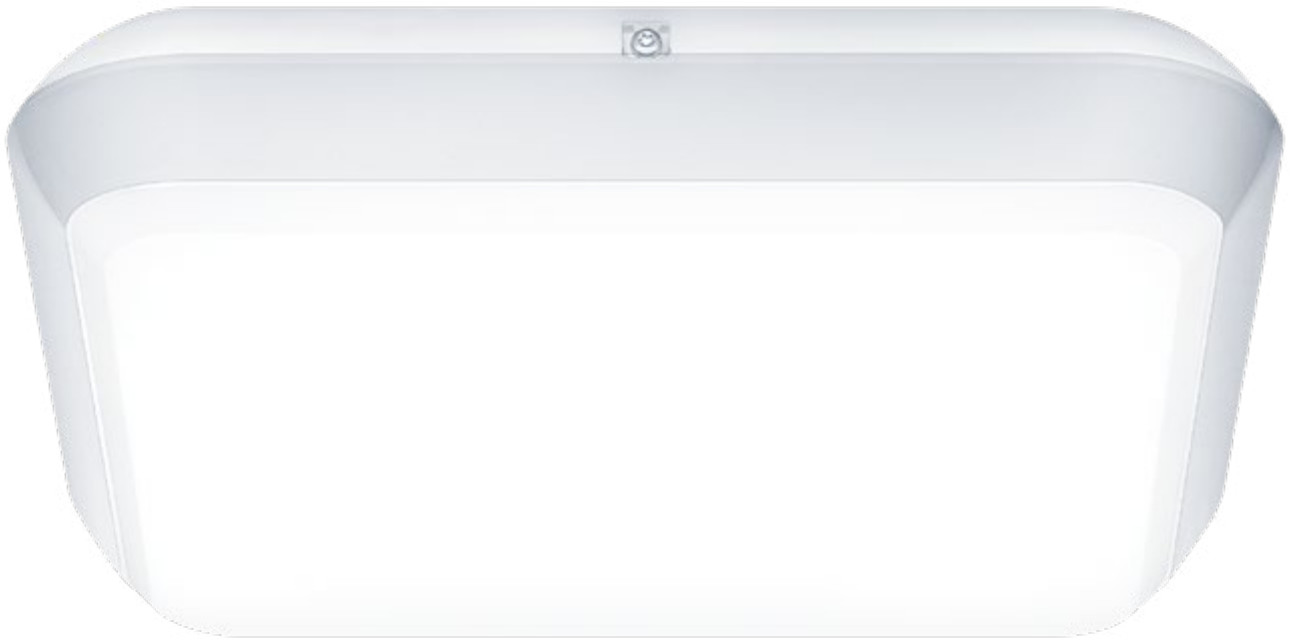
# BRAND NEW PRODUCTS

Our new range of products for autumn 2018 brings significant advances in performance, flexibility and efficiency, together with stunning design innovations. **Katona** is a cutting-edge wall light designed to solve many of the most common lighting challenges. Our tiny recessed emergency luminaire **Voyager Star\*** stands out for its cutting-edge light technology, flexible mounting options and hassle-free connectivity. The third generation of our **HiPak** industrial luminaire offers excellent performance and a quicker payback than ever. **Beta 2** is Thorn's new EU-manufactured ceiling panel, reaching efficacy of 120 lm/W and with a variety of mounting options. This autumn we also extend our Chalice downlight range with **Chalice 74** – a compact option with lumen packages of 550 lm and 900 lm. **Indus Top LED\*** combines high performance and easy installation, making it ideal for many industrial applications. And our new **Voyager One\*** is two products in One: a high-performing safety luminaire and a safety sign luminaire.

These latest new products from Thorn are another demonstration of our commitment to providing great light for people, spaces and the environment, with top-quality illumination, brilliant design and highly efficient technology. And, as always, we continue to update and improve our existing products to ensure the best possible performance. For details of all the latest additions to the Thorn range, please read on.

\*Product not available in mainland China and Hong Kong

# KYATONA



## The problem solver for almost any lighting task.

A wall light that combines market-leading efficiency with easy installation and protection against water, dust and impact damage. A powerful lighting tool that solves many lighting tasks. Katona has the complete package of solutions. It goes from controls, state of the art lithium ION emergency technology, vandal resistant screws, to high resistance and robustness (IP65 / IK10). It is easily installed with a rotatable LED board which provides high efficiency and a diffuse lighting distribution, with no visible LED dots.

**VOYAGER**

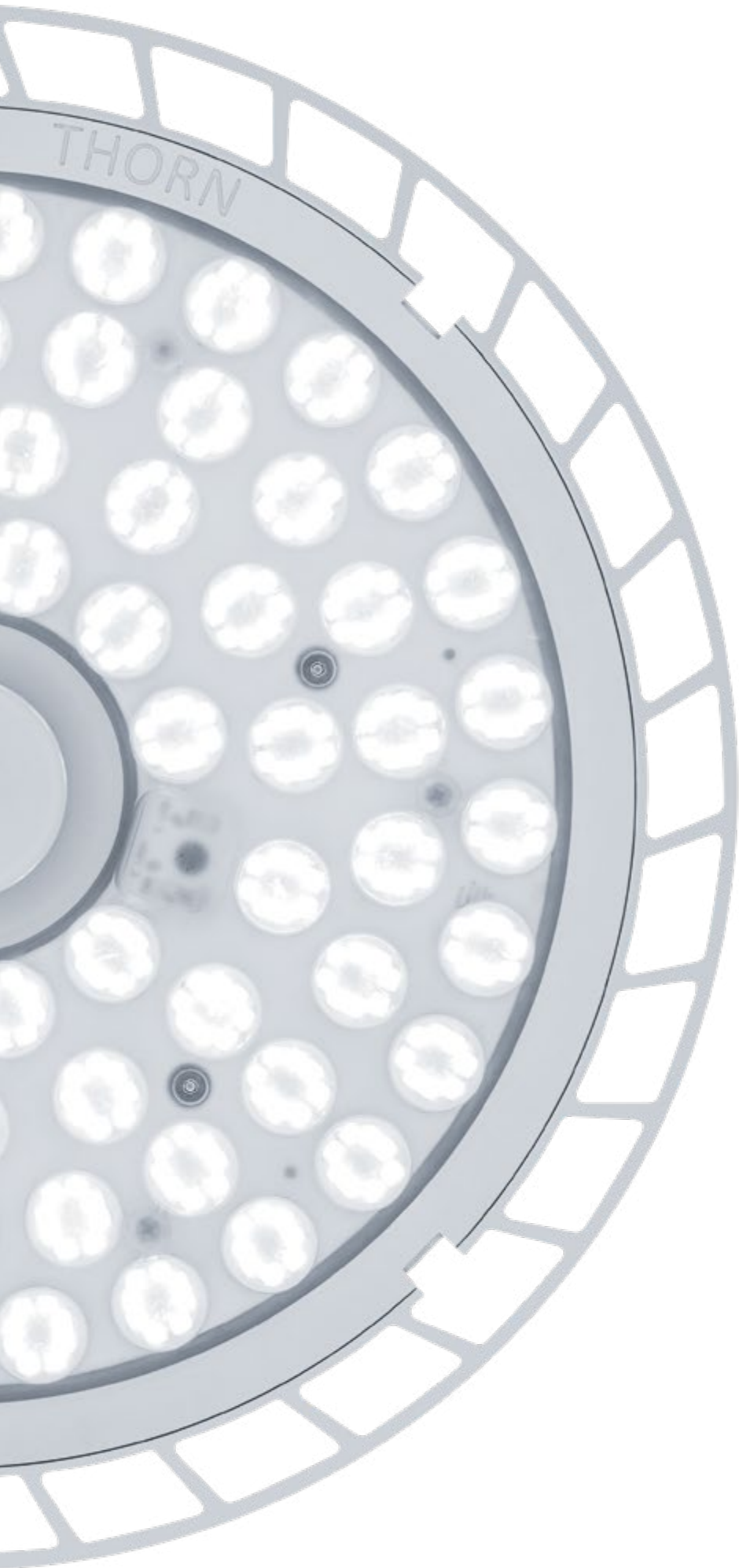
# STAIR





## Performance, flexibility and intelligence.

Voyager Star\* stands for cutting-edge performance – a light technology that adapts to every building situation, flexible mounting options including recessed, surface-mounted and continuous row-systems and a perfectly discreet appearance.



# K R E T





**The third generation of Thorn's innovative industrial luminaire offers stunning performance and a compelling return of investment.**

The latest generation of Thorn's HiPak high bay is a highly efficient one-for-one replacement for conventional industrial luminaires – and now with a higher value efficacy than its predecessors, it promises a quicker payback than ever. With a choice of two sizes and six lumen outputs up to 35 000 lm. Multiple light distributions are available and specially designed reflectors mean HiPak is also suitable for applications such as retail, where appearance and visual comfort are high priorities. HiPak features a range of control options to enable even greater energy savings, including a DALI version, a corridor grouping function, and various options for sensor integration. An emergency option is also available.



# BETA



## Excellent light quality.

The successor of our popular Beta range, Beta 2, is Thorn's next-generation ceiling panel. With a colour rendering index (CRI) of 80+ and a unified glare rating (UGR) of < 19 for all versions, Beta 2 delivers excellent light quality and complies with the indoor workplace lighting standard EN12464-1.

# CHALICE

## 74





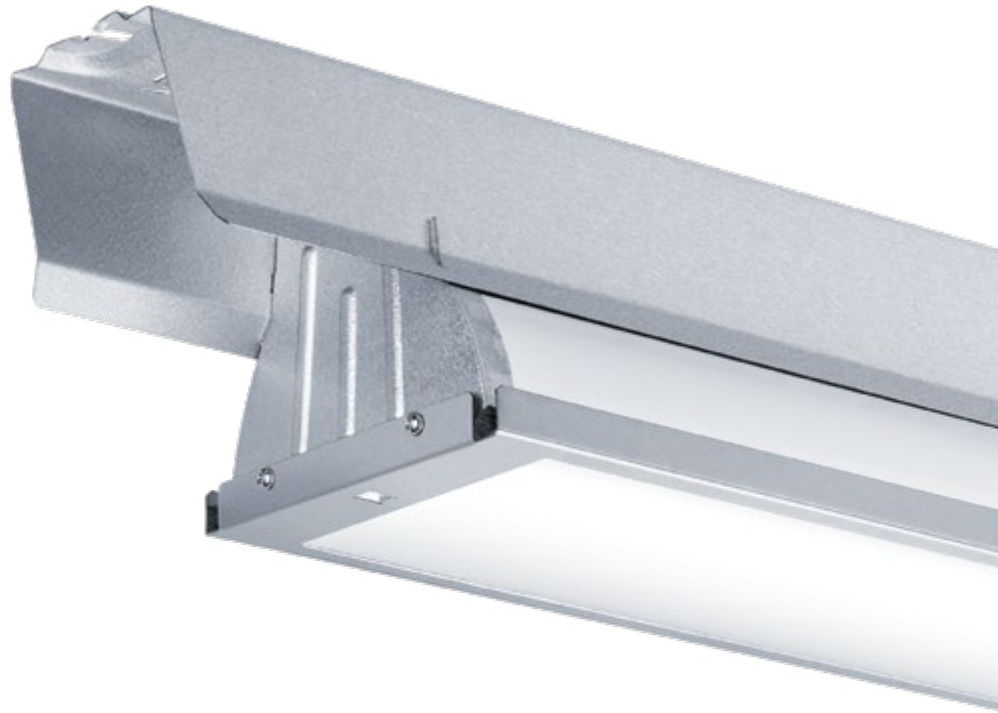
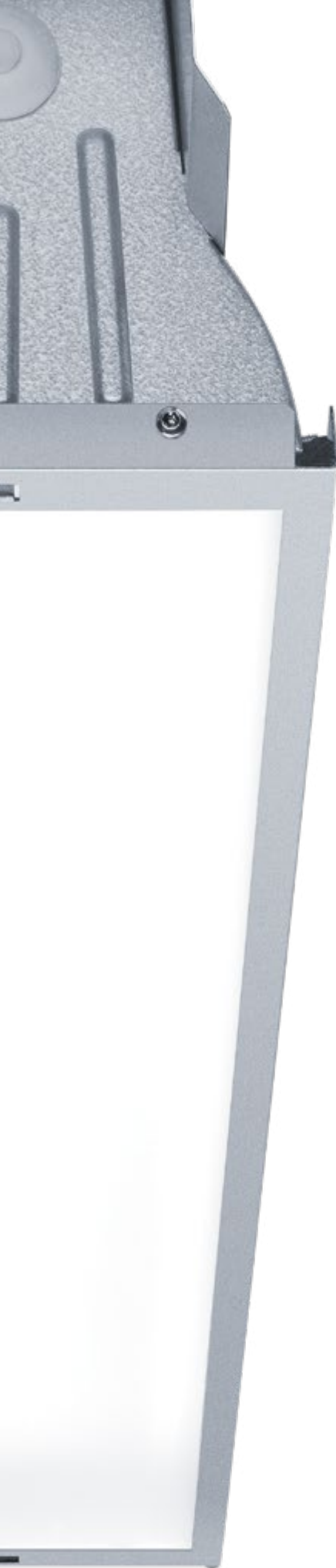
**The Chalice downlight range has been extended with this new, compact 74 mm version.**

Chalice 74 is a new compact fire-rated downlight with two lumen packages of 550 lm and 900 lm. The new 74 mm Chalice sits alongside Thorn's existing 150 mm and 200 mm Chalice and Chalice Pro products, creating a complete and consistent range that's ideal for hotels, residential areas and restrooms. A range of light distributions is available, and exchangeable bezels mean Chalice 74 can even be customised to suit the look of different settings. It has a CRI of 80+ and colour temperatures of 3000 K and 4000 K. As well as being fire-rated, Chalice 74 is IP65 rated for a high level of protection against dust and moisture. Installation is simple and tool-free thanks to a handy detachable connector.

# INDUS

TOP LED





**This high performance industrial luminaire is designed for easy installation and efficiency.**

Indus Top LED\* is specifically designed for industrial applications that demand high performance and easy installation, making it ideal for warehouses, workshop areas, hardware stores and industrial environments with high ceilings. The luminaire is available with lumen output of 8000 lm or 12 000 lm, and achieves efficacy of up to 150 lm/W.

\*Product not available in mainland China and Hong Kong  
Product Focus Edition 2/2018

THORNLIGHTING.COM/VOYO

# VOYAGER







# PRODUCT UPGRADES



[THORNLIGHTING.COM/OMGC](http://THORNLIGHTING.COM/OMGC)

## OMEGA CIRCULAR 300

**An alternative to square ceiling panels.**

Omega Circular 300 brings something different to office and education lighting. This slim circular ceiling fitting is an attractive alternative to our standard square Omega luminaire, and is easy to install. Omega Circular 300 is available with lumen packages of 1500 lm, 2800 lm and 3200 lm, and colour temperatures of 3000 K or 4000 K with a colour rendering index of 80. It has a lifetime of 50 000 hours.



[THORNLIGHTING.COM/IQSU](http://THORNLIGHTING.COM/IQSU)

## IQ WAVE SUSPENDED HU

**The latest addition to the IQ Wave range, offering comfort without compromise.**

This new high upright variant of our groundbreaking IQ Wave suspended fitting provides a direct-indirect ratio of 40:60. Using Thorn's patented MV-Tech optic, IQ Wave provides gentle, low-glare light for workplaces, designed to illuminate tasks, spaces and faces. Four different lumen packages are available with efficacy as high as 111 lm/W, and the luminaire can be easily mounted in continuous runs.



THORNLIGHTING.COM/CHLC

## BASICDIM WIRELESS FOR CHALICE

### State-of-the-art mobile control for the Chalice range.

It's now possible to control your Chalice downlights from your mobile device. BasicDIM Wireless brings the very latest in app-based control functionality to the Chalice range. The technology uses Bluetooth to communicate directly with luminaires, creating a robust mesh network. No new wiring is required and luminaires are simply installed as normal. This makes products enhanced with basicDIM particularly well suited to retrofit and refurbishment projects that require controls. Luminaires and control devices are commissioned through the app, saving time and money.



THORNLIGHTING.COM/VYST

## VOYAGER STYLE\*

### The ultra-slim emergency exit sign.

At just 37 mm thick, Thorn's new Voyager Style luminaire is ultra-slim and unobtrusive. For self-contained systems, the three-hour versions of control test, auto test and manual are available. Voyager Style can be easily mounted on ceilings or walls. Suspended versions are available, using the same universal housing. With an adapter, recessed mounting is also possible for the sleekest possible look. Voyager Style surface versions are rated IP43 for protection against dust and moisture, making it a versatile solution.

\* Product not available in mainland China and Hong Kong  
Product Focus Edition 2/2018

**THORN**  
LIGHTING

# NICE TO MEET YOU.

[THORNLIGHTING.COM/OFFICES](http://THORNLIGHTING.COM/OFFICES)



**5 YEAR  
GUARANTEE**

As a globally leading luminaire manufacturer, Thorn Lighting provides a five-year warranty for its complete product range within all European Countries.

[THORNLIGHTING.COM/GUARANTEE](http://THORNLIGHTING.COM/GUARANTEE)

Thorn Lighting is constantly developing and improving its products. All descriptions, illustrations, drawings and specifications in this publication present only general particulars and shall not form part of any contract. The right is reserved to change specifications without prior notification or public announcement. All goods supplied by the company are supplied subject to the company's General Conditions of Sale, a copy of which is available on request. All measurements are in millimetres and weights in kilograms unless otherwise stated.

APAC Publication Date: 11/18