

THORN

EyeKon

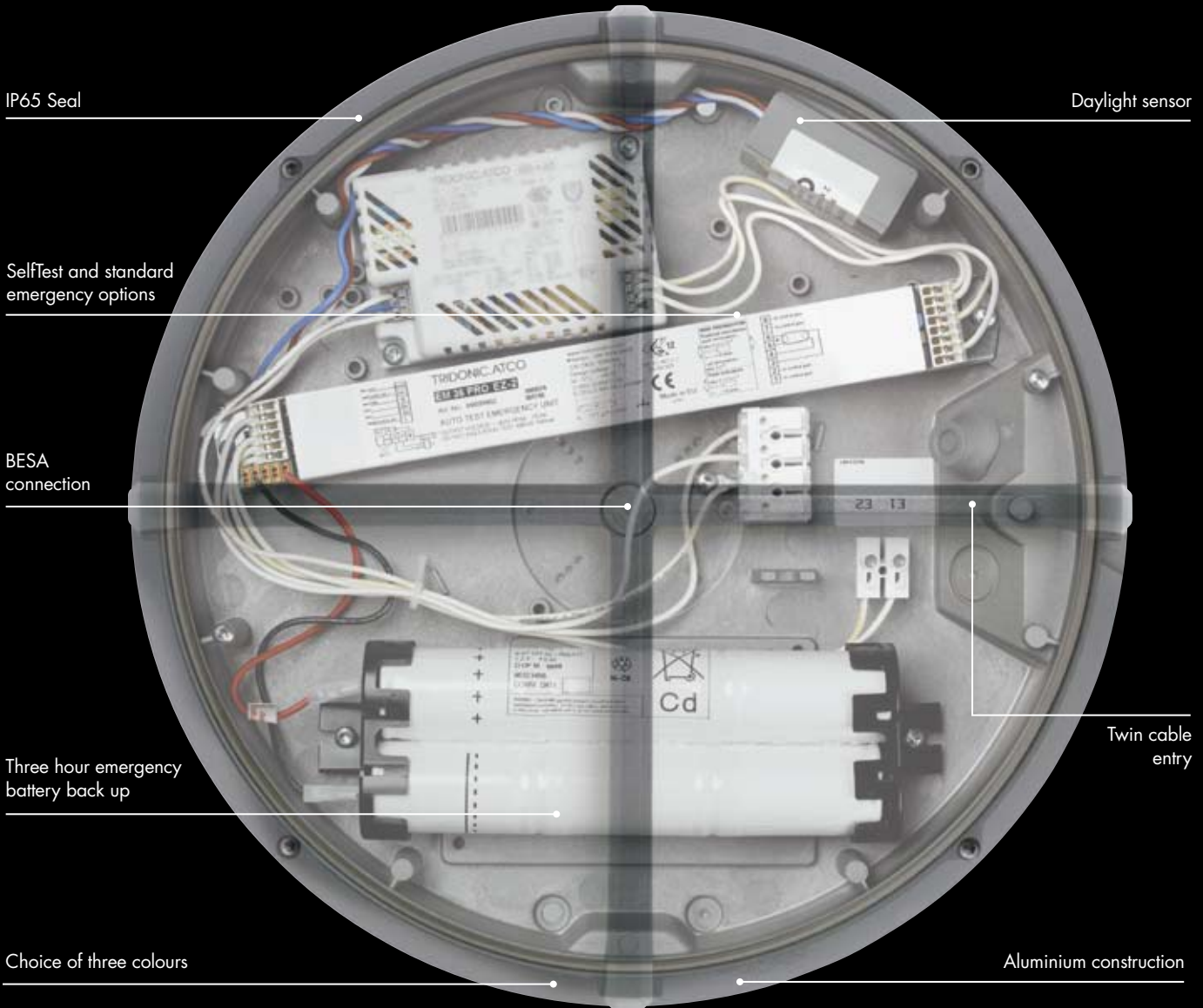
A range of robust, vandal resistant bulkheads designed for outdoor applications





EyeKon

Offering a choice of four designs, two sizes and three colour options to suit every exterior lighting scheme



Tamper resistant screws



Robust double wall conceals cable from view (also with cable clamp)



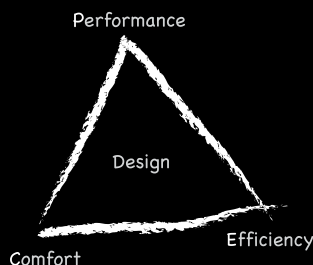
Tough polycarbonate opal diffuser (clear diffuser option)



Energy saving with an integral daylight sensing photocell

Performance, Efficiency and Comfort (PEC) – for a better lit environment

EyeKon evokes the spirit of Thorn Lighting's dynamic, results-orientated PEC programme



The programme is based on the principle that Performance, Efficiency and Comfort determine the effectiveness of lighting, its impact on the people using it, and its impact on the natural environment. EyeKon delivers the right light on the right place at the right time.



Performance: Providing the best visual effectiveness

- Engineered for improved visibility, EyeKon supplies sufficient light to provide orientation and direction for security after dark. EyeKon has been designed to spread light sideways, allowing fittings to be widely spaced without leaving dark areas between fittings. The optics also distribute light in front of the luminaire to illuminate paths and thoroughfares
- Good modelling - enhances human features and reveals patterns in surfaces and objects
- Optical control options reduce glare to a minimum
- Good colour rendering for pedestrians, improving visual perception

Efficiency: Conserving energy and effort, reducing CO₂ emissions and waste, providing lighting that is practical and efficient to install, operate and maintain.

- Electronic ballast for reduced power consumption and longer lamp life
- Visor version reduces upward light, which helps limit obtrusive light and improves the efficiency of the installation
- Photocell ensures luminaires are turned off when not needed. This will reduce power demand, conserve energy and reduce global warming. The installation will be more economic due to reduced running costs

- Integrated emergency lighting variants that allow remote monitoring of the luminaire status via a PC ensure timely maintenance and compliance with legal requirements for record keeping
- Easy to install and service, reducing the cost of ownership
- Designed to be fit for purpose, EyeKon is sealed to IP65 (dust-tight and jet-proof), is supplied with tamper resistant screws, and has an impact rating of IK10, meaning it is robust and impact resistant
- Sustainable materials - body and bezel of LM6 aluminium

Comfort: giving people satisfaction and stimulation

- In open areas when mounted at its optimum mounting height good vertical light is delivered onto adjacent areas, helping to create a feeling of general safety and well-being. Models can also be used to guide, attract, warm and invite
- Choice of four modern minimalist designs to compliment and preserve the character of the architecture, making it a pleasant space
- Halo visor contributes with a soft halo glow that creates a warm, friendly environment
- The use of high frequency control gear provides flicker free light and prevents stress to the visual system
- Bollard use brings light down to the human level, creating intimate pools of light on pavements

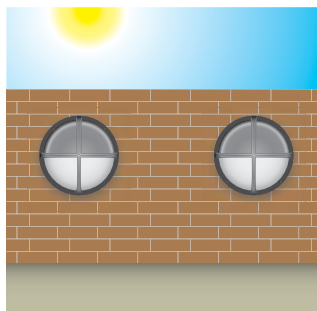
Energy saving with EyeKon



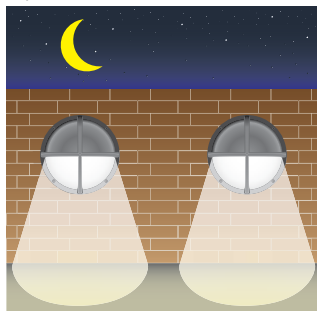
Energy saving with daylight sensing

In a world where we all strive to save energy and the environment, the new EyeKon range helps you to save money at the same time as cutting carbon emissions.

Lighting accounts for around twenty per cent of a companies' energy costs, so anything that can help reduce those costs is a great benefit. One response is to ensure that luminaires are not illuminated during daylight hours. The EyeKon range can be supplied with an integrated sensor that will automatically detect the daylight and switch off the luminaire, helping to protect the planet and reduce electricity bills. There are photocell variants with emergency available as standard.



Day*



Night*

*Not to scale for illustration only

EyeKon can be supplied with an option of a daylight sensor fitted as standard. Helping save energy costs by automatically switching the luminaire on or off depending on the ambient light levels.

Emergency Lighting

European safety standards specify that emergency lighting is required in all public places to enable a safe exit if the normal lighting fails. Emergency lighting has to provide sufficient lighting to aid safe evacuation.

EyeKon offers a number of emergency lighting options that are integrated into the luminaire. This self-contained approach improves the appearance of the location while reducing installation cost and complexity.

The options support integrated emergency operation for three hours, allowing full continuity of emergency lighting after an evacuation. SelfTest emergency lighting options include a diagnostic microprocessor that will automatically perform function tests and duration tests. It monitors and automatically tests emergency luminaires at specified intervals, displaying the status of each unit using a two-colour LED. As a result, any problems with battery and lamp health are detected early, without requiring manual inspection.





Applications

EyeKon is suitable for a wide range of outdoor applications and can be fitted to the ceiling, wall or mounted into a bollard

Typical applications:

- Retail and commercial buildings
- Schools and universities
- Hospitals
- Sports and leisure centres
- Car parks
- Forecourts
- Entrances
- Amenity lighting
- Gardens and parks
- Building perimeters
- Emergency exit routes



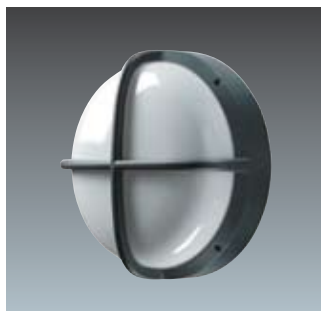
< Visor bollard mounted, anthracite



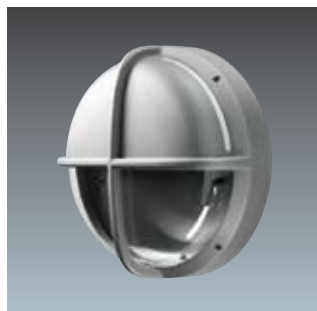
Product features



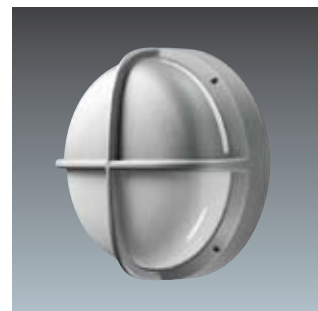
Small, bezel, silver grey, opal diffuser



Small, cross, anthracite, opal diffuser



Small, halo visor, silver grey, clear diffuser



Small, halo visor, silver grey, opal diffuser



Large, bezel, anthracite, opal diffuser



Large, cross, black, opal diffuser



Large, visor, anthracite, opal diffuser



Large, halo visor, black, opal diffuser

Lamps

Small

- ☛ 9W TC-SEL (FSD) compact fluorescent. Cap: 2G7
- ☛ 18W TC-DEL (FSQ) compact fluorescent. Cap: G24q-2
- ☛ 26W TC-TEL (FSM) compact fluorescent. Cap: GX24q-3
- ☛ 20-35W HIT-CE (MT) metal halide. Cap: G12

Large

- ☛ 28-55W TC-DDEL (FSS) compact fluorescent. Cap: GR10
- ☛ 42W TC-TEL (FSM) compact fluorescent. Cap: GX24q-4
- ☛ 70W HIT-CE (MT) metal halide. Cap: G12

Materials/Finish

Housing and decorative feature (cross, bezel and visor): die-cast aluminium
 Diffusers: opal or clear polycarbonate
 Reflector: aluminium
 Gaskets: extruded silicone rubber sponge
 Vandal proof screws, torx key supplied with every luminaire

Installation/Mounting

Wall or ceiling (except 38W and 42W E3 versions) mounting with central BESA provision and four fixing points (2 horizontal holes to aid adjustment, additional holes for security or uneven surfaces). Two cable entries to rear or side (not for conduit use) into 3-way terminal block (4-way for E3 versions). Looping possible. Separate gear tray secures with two screws.

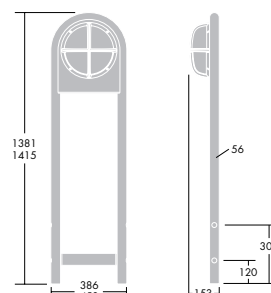
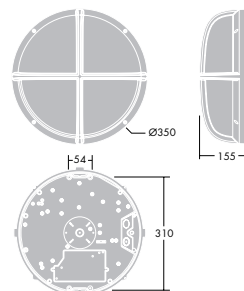
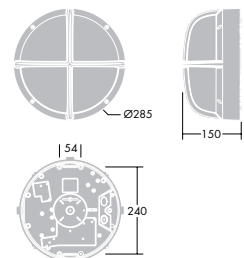
Standards

Designed and manufactured to comply with EN 60598
 Emergency versions with EN 60598 2. 22
 Ⓢ Class I electrical
 IK10
 ⚡⚡IP65 ⚡⚡CE

Specification

Surface mounted bulkhead with die-cast black/silver grey/anthracite aluminium body and opal/clear polycarbonate diffuser. IP65. IK10/double wall design that will conceal cable from view. Round large/small with plain/cross/visor/halo visor. For compact fluorescent/metal halide lamps. With emergency/and photocell/lighting. As Thorn EyeKon.

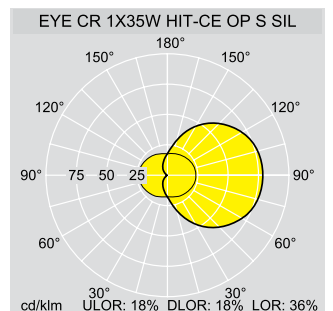
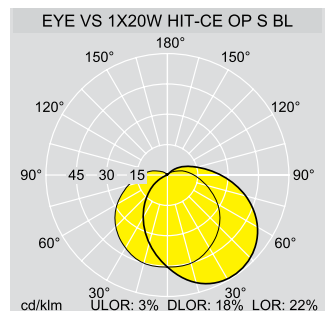
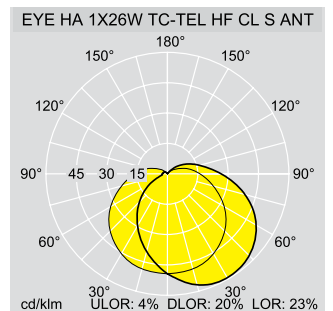
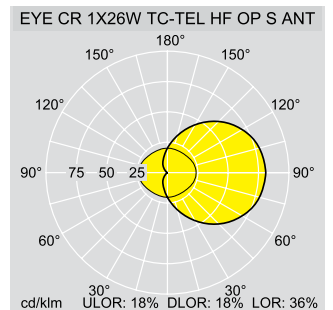
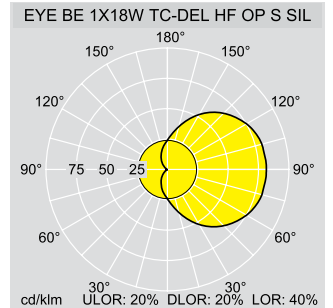
For more information visit the EyeKon microsite
www.thornlighting.com/eyeKon



Ordering Guides

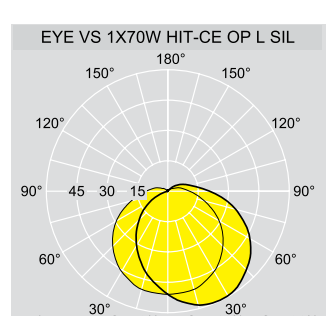
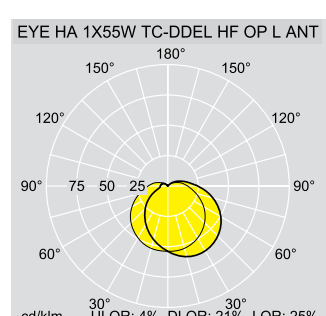
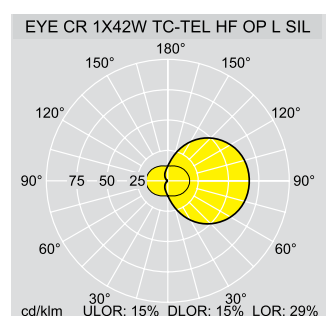
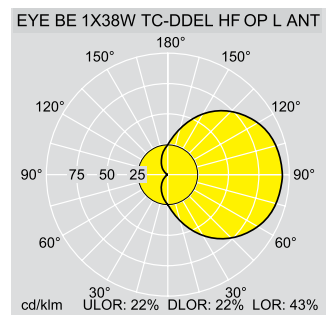
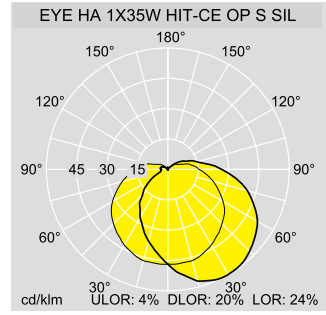
Ordering Guide Lamp (s) to be ordered separately

Description	Bezel	Icos code	Socket	Weight (Kg)	SAP Code		
					Anthracite	Black	Silver
Small version							
Clear diffuser							
EYE HA 1X9W TC-SEL HF CL S	HaloVisor	FSD	2G7	1.9	96206350	96206351	96206352
EYE HA 1X18W TC-DEL HF CL S	HaloVisor	FSG	G24q-2	2.0	96206319	96206320	96206321
EYE HA 1X26W TC-TEL HF CL S	HaloVisor	FSM	GX24q-3	2.0	96206344	96206345	96206346
Clear diffuser - Emergency versions							
EYE HA 1X18W TC-DEL HF E3 CL S	HaloVisor	FSG	GX24q-2	2.6	96206334	96206335	96206336
Opal diffuser							
EYE CR 1X9W TC-SEL HF OP S	Cross	FSD	2G7	1.9	96206353	96206354	96206355
EYE CR 1X18W TC-DEL HF OP S	Cross	FSG	G24q-2	2.0	96206322	96206323	96206324
EYE CR 1X20W HIT-CE HF OP S	Cross	MT	G12	2.1	96206389	96206390	96206391
EYE CR 1X26W TC-TEL HF OP S	Cross	FSM	GX24q-3	2.0	96206337	96206338	96206339
EYE CR 1X35W HIT-CE HF OP S	Cross	MT	G12	2.1	96206401	96206402	96206403
EYE BE 1X18W TC-DEL HF OP S	Cross	FSG	G24q-2	1.9	96206365	96206366	96206367
EYE CR 2X9W TC-SEL HF OP S	Cross	FSD	2G7	1.9	96206376	96206377	96206378
EYE BE 1X9W TC-SEL HF OP S	Bezel	FSD	2G7	1.6	96206356	96206357	96206358
EYE BE 1X18W TC-DEL HF OP S	Bezel	FSG	G24q-2	1.8	96206325	96206326	96206327
EYE BE 1X20W HIT-CE HFOP S	Bezel	MT	G12	1.9	96206392	96206393	96206394
EYE BE 1X26W TC-TEL HF OP S	Bezel	FSM	GX24q-3	1.7	96206340	96206342	96206343
EYE BE 1X35W HIT-CE HF OP S	Bezel	MT	G12	1.9	96206404	96206405	96206406
EYE BE 2X9W TC-SEL HF OP S	Bezel	FSD	2G7	1.7	96206379	96206380	96206381
EYE BE 2X18W TC-DEL HF OP S	Bezel	FSG	G24q-2	1.6	96207061	96206368	96206369
EYE HA 1X9W TC-SEL HF OP S	HaloVisor	FSD	2G7	1.9	96206359	96206360	96206361
EYE HA 1X18W TC-DEL HF OP S	HaloVisor	FSG	G24q-2	2.0	96206328	96206329	96206330
EYE HA 1X20W HIT-CE HF OP S	HaloVisor	MT	G12	2.1	96206395	96206396	96206397
EYE HA 1X26W TC-TEL HF OP S	HaloVisor	FSM	GX24q-3	2.0	96206341	96206953	96206954
EYE HA 1X35W HIT-CE HF OP S	HaloVisor	MT	G12	2.2	96206407	96206408	96206409
EYE HA 2X9W TC-SEL HF OP S	HaloVisor	FSD	2G7	1.9	96206382	96206383	96206384
EYE HA 2X18W TC-DEL HF OP S	HaloVisor	FSG	G24q-2	1.9	96206370	96206371	96206372
EYE VS 1X9W TC-SEL HF OP S	Visor	FSD	2G7	1.9	96206362	96206363	96206364
EYE VS 1X18W TC-DEL HF OP S	Visor	FSG	G24q-2	2.0	96206331	96206332	96206333
EYE VS 1X20W HIT-CE HF OP S	Visor	MT	G12	2.1	96206398	96206399	96206400
EYE VS 1X26W TC-TEL HF OP S	Visor	FSM	GX24q-3	2.0	96206347	96206348	96206349
EYE VS 1X35W HIT-CE HF OP S	Visor	MT	G12	2.2	96206410	96206411	96206412
EYE VS 2X9W TC-SEL HF OP S	Visor	FSD	2G7	1.9	96206385	96206386	96206387
EYE VS 2X18W TC-DEL HF OP S	Visor	FSG	G24q-2	1.9	96206373	96206374	96206375
Opal diffuser - Emergency version							
EYE CR 1X18W TC-DEL HF E3 OP S	Cross	FSG	G24q-2	2.6	96206307	96206308	96206309
EYE BE 1X18W TC-DEL HF E3 OP S	Bezel	FSG	G24q-2	2.4	96206310	96206311	96206312
EYE HA 1X18W TC-DEL HF E3 OP S	HaloVisor	FSG	G24q-2	2.6	96206313	96206314	96206315
EYE VS 1X18W TC-DEL HF E3 OP S	Visor	FSG	G24q-2	2.6	96206316	96206317	96206318
Large Version							
Opal diffuser							
EYE CR 1X28W TC-DDEL HF OP L	Cross	FSS	GR10q	2.6	96206473	96206474	96206475
EYE CR 1X38W TC-DDEL HF OP L	Cross	FSS	GR10q	2.6	96206545	96206546	96206547
EYE CR 1X42W TC-TEL HF OP L	Cross	FSM	GX24q-4	2.5	96206631	96206632	96206633
EYE CR 1X55W TC-DDEL HF OP L	Cross	FSS	GRY10q-3	2.5	96206655	96206656	96206657
EYE CR 1X70W HIT-CE HF OP L	Cross	MT	G12	2.8	96206680	96206681	96206682
EYE BE 1X28W TC-DDEL HF OP L	Bezel	FSS	GR10q	2.4	96206476	96206477	96206478
EYE BE 1X38W TC-DDEL HF OP L	Bezel	FSS	GR10q	2.4	96206548	96206549	96206550
EYE BE 1X42W TC-TEL HF OP L	Bezel	FSM	GX24q-4	2.3	96206634	96206635	96206636
EYE BE 1X55W TC-DDEL HF OP L	Bezel	FSS	GRY10q-3	2.3	96206658	96206659	96206660
EYE BE 1X70W HIT-CE HF OP L	Bezel	MT	G12	2.6	96206668	96206683	96206684
EYE HA 1X28W TC-DDEL HF OP L	HaloVisor	FSS	GR10q	2.8	96206479	96206480	96206481
EYE HA 1X38W TC-DDEL HF OP L	HaloVisor	FSS	GR10q	2.8	96206551	96206552	96206553
EYE HA 1X42W TC-TEL HF OP L	HaloVisor	FSM	GX24q-4	2.7	96206637	96206638	96206639
EYE HA 1X55W TC-DDEL HF OP L	HaloVisor	FSS	GRY10q-3	2.7	96206661	96206662	96206663
EYE HA 1X70W HIT-CE HF OP L	HaloVisor	MT	G12	3.0	96206685	96206686	96206687
EYE VS 1X28W TC-DDEL HF OP L	Visor	FSS	GR10q	2.8	96206482	96206483	96206484
EYE VS 1X38W TC-DDEL HF OP L	Visor	FSS	GR10q	2.8	96206554	96206555	96206556
EYE VS 1X42W TC-TEL HF OP L	Visor	FSM	GX24q-4	2.7	96206640	96206641	96206642
EYE VS 1X55W TC-DDEL HF OP L	Visor	FSS	GRY10q-3	2.7	96206664	96206665	96206666
EYE VS 1X70W HIT-CE HF OP L	Visor	MT	G12	3.0	96206689	96206688	96206690
Large Version							
Opal diffuser - photocell versions							
EYE CR 1X28W TC-DDEL P HF OP L	Cross	FSS	GR10q	2.6	96206461	96206462	96206463
EYE CR 1X38W TC-DDEL P HF OP L	Cross	FSS	GR10q	2.6	96206533	96206534	96206535
EYE CR 1X42W TC-TEL P HF OP L	Cross	FSM	GX24q-4	2.5	96206605	96206606	96206607
EYE CR 1X55W TC-DDEL P HF OP L	Cross	FSS	GRY10q-3	2.5	96206643	96206644	96206645
EYE CR 1X70W HIT-CE P HF OP L	Cross	MT	G12	2.8	96206669	96206670	96206671
EYE BE 1X28W TC-DDEL P HF OP L	Bezel	FSS	GR10q	2.4	96206464	96206465	96206466



Ordering Guide Lamp (s) to be ordered separately

Description	Bezel	Ilcos code	Socket	Weight (Kg)	SAP Code		
					Anthracite	Black	Silver
Large Version							
Opal diffuser - photocell versions							
EYE BE 1X38W TC-DDEL P HF OP L	Bezel	FSS	GR10q	2.4	96206536	96206537	96206538
EYE BE 1X42W TC-TEL P HF OP L	Bezel	FSM	GX24q-4	2.3	96206608	96206609	96206610
EYE BE 1X55W TC-DDEL P HF OP L	Bezel	FSS	GRY10q-3	2.3	96206646	96206647	96206648
EYE BE 1X70W HIT-CE P HF OP L	Bezel	MT	G12	2.6	96206672	96206673	96206674
EYE HA 1X28W TC-DDEL P HF OP L	HaloVisor	FSS	GR10q	2.8	96206467	96206468	96206469
EYE HA 1X38W TC-DDEL P HF OP L	HaloVisor	FSS	GR10q	2.8	96206539	96206540	96206541
EYE HA 1X42W TC-TEL P HF OP L	HaloVisor	FSM	GX24q-4	2.7	96206611	96206612	96206613
EYE HA 1X55W TC-DDEL P HF OP L	HaloVisor	FSS	GRY10q-3	2.7	96206649	96206650	96206651
EYE HA 1X70W HIT-CE P HF OP L	HaloVisor	MT	G12	3.0	96206675	96206676	96206677
EYE VS 1X28W TC-DDEL P HF OP L	Visor	FSS	GR10q	2.8	96206470	96206471	96206472
EYE VS 1X38W TC-DDEL P HF OP L	Visor	FSS	GR10q	2.8	96206542	96206543	96206544
EYE VS 1X42W TC-TEL P HF OP L	Visor	FSM	GX24q-4	2.7	96206614	96206615	96206616
EYE VS 1X55W TC-DDEL P HF OP L	Visor	FSS	GRY10q-3	2.7	96206652	96206653	96206654
EYE VS 1X70W HIT-CE P HF OP L	Visor	MT	G12	3.0	96206667	96206678	96206679
Opal diffuser - emergency version							
EYE CR 1X28W TC-DDEL HF E3 OP L	Cross	FSS	GR10q	3.1	96206425	96206426	96206427
EYE CR 1X38W TC-DDEL HF E3 OP L	Cross	FSS	GR10q	3.3	96206497	96206498	96206499
EYE CR 1X42W TC-TEL HF E3 OP L	Cross	FSM	GX24q-4	3.4	96206569	96206570	96206571
EYE BE 1X28W TC-DDEL HF E3 OP L	Bezel	FSS	GR10q	2.9	96206428	96206429	96206430
EYE BE 1X38W TC-DDEL HF E3 OP L	Bezel	FSS	GR10q	3.0	96206500	96206501	96206502
EYE BE 1X42W TC-TEL HF E3 OP L	Bezel	FSM	GX24q-4	3.2	96206572	96206573	96206574
EYE HA 1X28W TC-DDEL HF E3 OP L	HaloVisor	FSS	GR10q	3.4	96206431	96206432	96206433
EYE HA 1X38W TC-DDEL HF E3 OP L	HaloVisor	FSS	GR10q	3.5	96206503	96206504	96206505
EYE HA 1X42W TC-TEL HF E3 OP L	HaloVisor	FSM	GX24q-4	3.6	96206575	96206576	96206577
EYE VS 1X28W TC-DDEL HF E3 OP L	Visor	FSS	GR10q	3.4	96206434	96206435	96206436
EYE VS 1X38W TC-DDEL HF E3 OP L	Visor	FSS	GR10q	3.5	96206506	96206507	96206508
EYE VS 1X42W TC-TEL HF E3 OP L	Visor	FSM	GX24q-4	3.6	96206578	96206579	96206580
Opal diffuser - emergency version with photocell							
EYE CR 1X28W TC-DDEL P HF E3 OP L	Cross	FSS	GR10q	3.1	96206413	96206414	96206415
EYE CR 1X38W TC-DDEL P HF E3 OP L	Cross	FSS	GR10q	3.3	96206485	96206486	96206487
EYE CR 1X42W TC-TEL P HF E3 OP L	Cross	FSM	GX24q-4	3.4	96206557	96206558	96206559
EYE BE 1X28W TC-DDEL P HF E3 OP L	Bezel	FSS	GR10q	2.9	96206416	96206417	96206418
EYE BE 1X38W TC-DDEL P HF E3 OP L	Bezel	FSS	GR10q	3.0	96206488	96206489	96206490
EYE BE 1X42W TC-TEL P HF E3 OP L	Bezel	FSM	GX24q-4	3.2	96206560	96206561	96206562
EYE HA 1X28W TC-DDEL P HF E3 OP L	HaloVisor	FSS	GR10q	3.4	96206419	96206420	96206421
EYE HA 1X38W TC-DDEL P HF E3 OP L	HaloVisor	FSS	GR10q	3.5	96206491	96206492	96206493
EYE HA 1X42W TC-TEL P HF E3 OP L	HaloVisor	FSM	GX24q-4	3.6	96206563	96206564	96206565
EYE VS 1X28W TC-DDEL P HF E3 OP L	Visor	FSS	GR10q	3.4	96206422	96206423	96206424
EYE VS 1X38W TC-DDEL P HF E3 OP L	Visor	FSS	GR10q	3.5	96206494	96206495	96206496
EYE VS 1X42W TC-TEL P HF E3 OP L	Visor	FSM	GX24q-4	3.6	96206566	96206567	96206568
Opal diffuser - SelfTest emergency versions							
EYE CR 1X28W TC-DDEL HF E3TX OP L	Cross	FSS	GR10q	3.3	96206449	96206450	96206451
EYE CR 1X38W TC-DDEL HF E3TX OP L	Cross	FSS	GR10q	3.6	96206521	96206522	96206523
EYE CR 1X42W TC-TEL HF E3TX OP L	Cross	FSM	GX24q-4	3.6	96206593	96206594	96206595
EYE BE 1X28W TC-DDEL HF E3TX OP L	Bezel	FSS	GR10q	3.1	96206452	96206453	96206454
EYE BE 1X38W TC-DDEL HF E3TX OP L	Bezel	FSS	GR10q	3.4	96206524	96206525	96206526
EYE BE 1X42W TC-TEL HF E3TX OP L	Bezel	FSM	GX24q-4	3.4	96206596	96206597	96206598
EYE HA 1X28W TC-DDEL HF E3TX OP L	HaloVisor	FSS	GR10q	3.5	96206455	96206456	96206457
EYE HA 1X38W TC-DDEL HF E3TX OP L	HaloVisor	FSS	GR10q	3.8	96206527	96206528	96206529
EYE HA 1X42W TC-TEL HF E3TX OP L	HaloVisor	FSM	GX24q-4	3.8	96206599	96206600	96206601
EYE VS 1X28W TC-DDEL HF E3TX OP L	Visor	FSS	GR10q	3.5	96206458	96206459	96206460
EYE VS 1X38W TC-DDEL HF E3TX OP L	Visor	FSS	GR10q	3.8	96206530	96206531	96206532
EYE VS 1X42W TC-TEL HF E3TX OP L	Visor	FSM	GX24q-4	3.8	96206602	96206603	96206604
Opal diffuser - SelfTest emergency with photocell							
EYE CR 1X28W TC-DDEL P HF E3TX OP L	Cross	FSS	GR10q	3.3	96206437	96206438	96206439
EYE CR 1X38W TC-DDEL P HF E3TX OP L	Cross	FSS	GR10q	3.6	96206509	96206510	96206511
EYE CR 1X42W TC-TEL P HF E3TX OP L	Cross	FSM	GX24q-4	3.6	96206581	96206582	96206583
EYE BE 1X28W TC-DDEL P HF E3TX OP L	Bezel	FSS	GR10q	3.1	96206440	96206441	96206442
EYE BE 1X38W TC-DDEL P HF E3TX OP L	Bezel	FSS	GR10q	3.4	96206512	96206513	96206514
EYE BE 1X42W TC-TEL P HF E3TX OP L	Bezel	FSM	GX24q-4	3.4	96206584	96206585	96206586
EYE HA 1X28W TC-DDEL P HF E3TX OP L	HaloVisor	FSS	GR10q	3.5	96206443	96206444	96206445
EYE HA 1X38W TC-DDEL P HF E3TX OP L	HaloVisor	FSS	GR10q	3.8	96206515	96206516	96206517
EYE HA 1X42W TC-TEL P HF E3TX OP L	HaloVisor	FSM	GX24q-4	3.8	96206587	96206588	96206589
EYE VS 1X28W TC-DDEL P HF E3TX OP L	Visor	FSS	GR10q	3.5	96206446	96206447	96206448
EYE VS 1X38W TC-DDEL P HF E3TX OP L	Visor	FSS	GR10q	3.8	96206518	96206519	96206520
EYE VS 1X42W TC-TEL P HF E3TX OP L	Visor	FSM	GX24q-4	3.8	96206590	96206591	96206592
Bollards							
EYE BOLLARD LARGE					Anthracite	Black	Silver
EYE BOLLARD SMALL					96207085	96207083	96207086



THORN

Lighting people and places

Thorn Lighting Main Offices

Thorn Academy of Light

Green Lane Industrial Estate, Spennymoor
County Durham DL16 6HL, UK
Tel: (44) 1388 420 042
E-mail: academy@thornlighting.com
Website: www.thornacademyoflight.com

Australia

Thorn Lighting Pty Limited
43 Newton Road, Wetherill Park
NSW 2164
Tel: (02) 8786 6000
Fax: (02) 9612 2700
E-mail: infoaustralia@thornlighting.com
Website: www.thornlighting.com.au

Austria

Thorn Licht GmbH
Donau-City-Straße 1,
1220 Wien, Austria
Tel: (43) 1 202 66 11
Fax: (43) 1 202 66 11 82712
E-mail: office.at@thornlighting.com
Website: www.thornlighting.at

China

Thorn Lighting (Guangzhou) Operations Ltd,
No.12 Lian Yun Road, Eastern Section,
GETDD, Guangzhou 510530, China
Tel: (86) 20 3228 2706
Fax: (86) 20 3228 1777
E-mail: sales.cn@thornlighting.com

Thorn Lighting (Tianjin) Co. Ltd
332 Hongqi Road, Tianjin 300190,
China
Tel: (86) 22 8369 2303
Fax: (86) 22 8369 2302
E-mail: info.tj@thornlighting.com

Czech Republic

Thorn Lighting CS spol. s.r.o.,
Na Březince 6/930, 150 00 Praha 5
Czech Republic
Tel: (420) 224 315 252
Fax: (420) 233 326 313
E-mail: thorn.cz@thornlighting.com
Website: www.thornlighting.cz

Denmark

Thorn Lighting A/S
Kanonbådsvej 12B, Holmen,
1437 København K, Denmark
Tel: (45) 76 96 36 00
Fax: (45) 76 96 36 01
E-mail: info.dk@thornlighting.com
Website: www.thornlighting.dk

France

Thorn Europhane SA
156 Boulevard Haussmann,
Cedex 08, Paris 75379, France
Tel: (33) 1 49 53 6262
Fax: (33) 1 49 53 6240
Website: www.thornlighting.fr

Hong Kong

Thorn Lighting (Hong Kong) Limited
Unit 4301, Level 43, Tower 1,
Metropolaza, 223 Hing Fong Road,
Kwai Chung, N.T., Hong Kong
Tel: (852) 2578 4303
Fax: (852) 2887 0247
E-mail: info.hk@thornlighting.com

India

Thorn Lighting India Pvt. Ltd.
501, 5th Floor, Tanishka
Opp. Gundecha Industrial Estate
Akurli Road, Kandivali (E), Mumbai – 400 101, India
Tel: (91) 22-67839100
Fax: (91) 22-67839106
E-mail: international_sales@thornlighting.com
Website: www.thornlighting.com

International Sales

Thorn Lighting Limited
Silver Screens, Elstree Way, Borehamwood,
Hertfordshire, WD6 1FE, UK
Tel: (44) 20 8732 1915
Fax: (44) 20 8732 1911
E-mail: international_sales@thornlighting.com
Website: www.thornlighting.com

Ireland

Thorn Lighting (Ireland) Limited
Century House
Harolds Cross Road
Dublin 6W
Tel: (353) 1 4922 877
Fax: (353) 1 4922 724
E-mail: dublinsales@thornlighting.com
Website: www.thornlighting.co.uk

Italy

Thorn Europhane Spa
Via G Di Vittorio, 2, Cadriano di Granarolo,
Bologna 40057, Italy
Tel: (39) 051 763391
Fax: (39) 051 763088
E-mail: info@thornlighting.it
Website: www.thornlighting.it

New Zealand

Thorn Lighting (NZ) Ltd
399 Rosebank Road, Avondale, Auckland 1026
PO Box 71134, Rosebank, Auckland 1348
Tel: (64) 9 828 7155
Fax: (64) 9 828 7591
E-mail: info.NZ@thornlighting.com
Website: www.thornlighting.co.nz

Norway

Thorn Lighting AS
Strømsveien 344, 1081 Oslo,
Norway
Tel: (47) 22 82 07 00
Fax: (47) 22 82 07 01
E-mail: info.no@thornlighting.com
Website: www.thornlighting.no

Poland

Thorn Lighting Polska Sp.z.o.o.,
Ul. Gazowa 26A, Wrocław 50-513,
Poland
Tel: (48) 71 7833 740
Fax: (48) 71 3366 029
E-mail: thorn.pl@thornlighting.com
Website: www.thornlighting.pl

Russia

Thorn Lighting
Novoslobodskaya Str., 21, office 406
Business Center "Novoslobodskaya 21",
Moscow 127030, Russia
Tel: (7) 495 981 35 41
Fax: (7) 495 981 35 42
E-mail: kristina.skachinskaya@thornlighting.com
Website: www.thornlighting.ru

Singapore

Thorn Lighting (Singapore) Pte Ltd
5 Kaki Bukit Crescent, 04-02 Koyotech
Building, 416238 Singapore
Tel: (65) 6844 5800
Fax: (65) 6745 7707
E-mail: info.sg@thornlighting.com

Sweden

Thorn Lighting AB
Industrigatan, Box 305, SE-261 23
Landskrona, Sweden
Tel: (46) 418 520 00
Fax: (46) 418 265 74
E-mail: info.se@thornlighting.com
Website: www.thornlighting.se

United Arab Emirates

Thorn Lighting Ltd Dubai
Al Shoala Building, Office 301,
Block E, Airport road, P.O. Box 1200,
Deira, Dubai, UAE
Tel: (971) 4 2940181
Fax: (971) 4 2948838
E-mail: illuae@emirates.net.ae
Website: www.thornlighting.com

Thorn Gulf LLC

Al Shoala Building, Office 301/2, Block E,
Airport road, P.O. Box 22672, Deira,
Dubai, UAE
Tel: (971) 4 2948938
Fax: (971) 4 2948838
E-mail: thorn@gulf.ae
Website: www.thornlighting.com

United Kingdom

Thorn Lighting Limited
Silver Screens, Elstree Way, Borehamwood,
Hertfordshire, WD6 1FE, UK
Tel: (44) 20 8732 9800
Fax: (44) 20 8732 9801
E-mail: brochures.uk@thornlighting.com

Thorn Olympics Sports Lighting Team

Tel: 07785 251 438
E-mail: olympics.team@thornlighting.com
Website: www.thornlighting.co.uk

www.thornlighting.com

Thorn Lighting is constantly developing and improving its products. All descriptions, illustrations, drawings and specifications in this publication present only general particulars and shall not form part of any contract. The right is reserved to change specifications without prior notification or public announcement. All goods supplied by the company are supplied subject to the company's General Conditions of Sale, a copy of which is available on request. All measurements are in millimetres and weights in kilograms unless otherwise stated.

Publication No: 455 (INT) Publication Date: 08/09