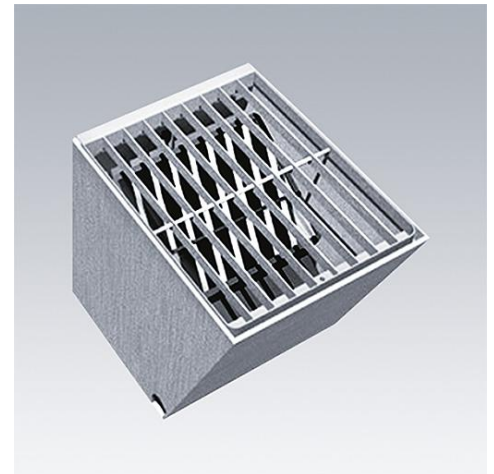


Ground Recessing Boxes

A range of ground recessing boxes in cast concrete, with internal fitments, for use with Thorn floodlights.

- The boxes offer a choice between tempered glass and steel grille top closures, and are proofed against degradation thanks to their high load-bearing capacity, providing long life durability
- Easy installation
- Internal fitments offer adjustment of floodlight position and aiming
- Wide variety of sizes



Photographs, line drawings and photometric data are representative only. For specific product detail please select an individual product.



Material/Finish

Box: Cast in concrete.

Steel grille: Hot dipped galvanised steel.

Glass: Tempered, supported in stainless steel frame.

Installation/Mounting

Easy and quick installation.

Possible to tilt the floodlight up/down.

Boxes incorporate drainage access

Specification

To specify state: Cast concrete ground recessing box with internal fitments and grille cover/tempered glass cover.

As Thorn Ground Recessing Boxes.