

THORN

Fast.Simple.Affordable.
Contractor Guide 2016



THORN
LIGHTING PEOPLE

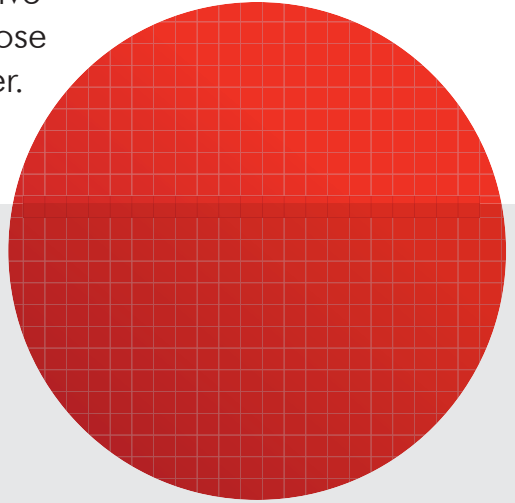
Thorn contractor guide

The easy way to buy

We offer products with outstanding quality, easy installation and competitive prices. All this is provided to you in close cooperation with your local wholesaler.

Save time. Save money. Save energy.

With our comprehensive portfolio you can realise smaller and larger projects in a fast, cost-effective and energy-efficient manner. According to project requirements, solutions with conventional technology as well as up-to-date LED luminaires can be implemented – depending on your budget.



Fast.Simple.
Affordable.
The Contractor
range.



5 Year Warranty



As a globally leading luminaire manufacturer, Thorn Lighting provides a five-year warranty for its complete product range. Effective from 1st May 2015.
www.thornlighting.com.au



Contents

Downlights



06 Value



08 Cetus



10 Chalice



12 Shop

Wall Mounted/Ceiling Mounted



14 Rhine



16 Leopard



18 Club



20 Novaline

Spotlights and Track



22 Spot



24 SuperTrack 2



26 College



28 Jupiter 3

Surface and Suspended

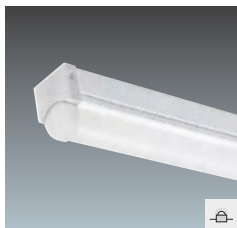
Battens



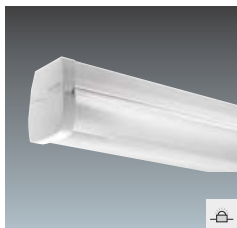
30 Cadet



32 ClipLine



34 PopPack



36 MaxiBatten

Recessed



38 Royal

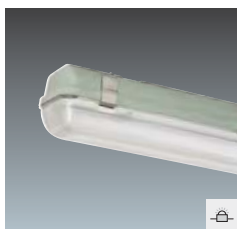


40 Sustain 3

Industrial



42 Poseidon



44 WeatherForce

Industrial



46 X-Force



48 Gladiator

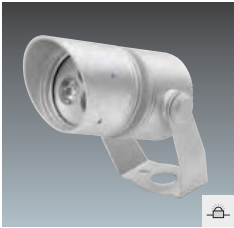


50 EcoLine HighBay / HiPak



52 Primata Value

Floodlighting



54 D-CO Flood



56 YardLight

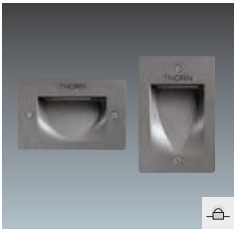


58 AreaPak / AreaFlood

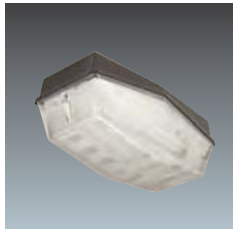


60 Olsys

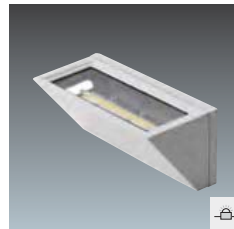
Wall



62 Jalon



64 Jewel



66 WallPack



68 Porto

Urban



70 Piazza 2



72 Chartor



74 D-CO Bollard



76 FleXity

Sport



78 Isaro



80 Urba



82 Champion

Emergency & Controls



8 Voyager

Value



LED downlight designed to replace fluorescent or halogen downlights

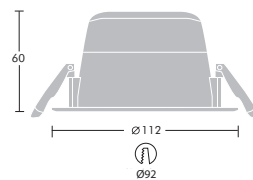
- Lumen efficacy up to 90lm/W
- Colour rendering > 80
- 92mm cutout
- Useful life 30,000 hours
- Colour temperature 3000K (warm white) & 4000K (cool white)
- Built-in dimmable driver to suit trailing edge dimmers
- Supplied with flex & plug

Materials and Finish

- Latest technology thermoplastic construction with a matt white finish
- UV stabilised acrylic diffuser
- Utilize the latest LED technology for use in residential, commercial, retail and retrofit installations

Installation and Mounting

- Cut a 92mm dia. hole in the ceiling
- Lift and hold mounting springs either side of the fixture to fitting side, insert fixture through the cut out and release



*All dimensions in mm



Ordering Guide

Description	Circuit Power (W)	Wt (Kg)	Part No.
LED			
VALUE LED900-840 90CO FIX 90D DIM WH	10	0.5	96545520
VALUE LED900-830 90CO FIX 90D DIM WH	10	0.5	96545521

900 - lumen category
 830, 840 - CRI>80, CCT 3000K,4000K
 90D - 90 degree beam angle
 DIM - trailing edge dimming
 WH - white finish

Cetus

AS/NZS 60598



IK09



Recessed LED downlight with low height, direct replacement for traditional 1x26W or 2x26W compact fluorescent downlights

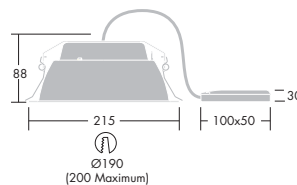
- Direct replacement for traditional 1x26W or 2x26W compact fluorescent downlights with up to 65% energy saving
- Only 88mm overall height to allow installation into low and restricted ceiling voids
- Sealed to IP44 as standard, suitable for use in bathrooms without the need for separate attachments
- Useful life L70 50,000 hours
- Supplied with flex and plug

Materials and Finish

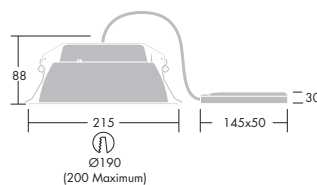
- Housing/body: aluminium, powder coated white RAL 9016
- Reflector: powder coated white RAL 9016

Installation and Mounting

- Tool free installation direct out of box
- Suitable for a wide range of ceiling types and depths from 1-40mm thickness
- Overall height of 88mm allows installation into low and restricted ceiling voids
- Remote driver with flex and plug for a quick and easy installation
- Cut out diameter = 190mm



CETUS LED 1000LM



CETUS LED 2000LM

*All dimensions in mm



Ordering Guide

Description	Circuit Power (W)	Wt (Kg)	Part No.
LED			
CETUS LED 1000 HF 830 FP	13	0.7	96545132
CETUS LED 1000 HF 840 FP	13	0.7	96545133
CETUS LED 2000 HF 830 FP	25	0.7	96545134
CETUS LED 2000 HF 840 FP	25	0.7	96545135

1000, 2000 - lumen category
830, 840 - CRI>80, CCT 3000K,4000K

Chalice

AS/NZS 60598



IK03



LED Downlight range in two sizes offering a direct replacement for CFL solutions with up to 2800 Llm

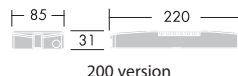
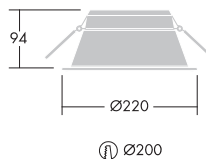
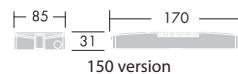
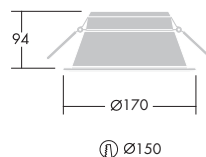
- High efficacy of 100Llm/W for low energy consumption
- Less than 100mm overall height making it ideal for low ceiling void depth
- IP44 as standard for use in bathrooms/washrooms
- CFL replacement with low maintenance lifetime of L70 50,000 hours

Materials and Finish

- Housing/body material: Aluminum painted white
- Bezel finish: RAL9016
- Reflector finish: Satin

Installation and Mounting

- Chalice can be installed directly from the box into a wide range of ceiling types including thicknesses from 1mm-40mm
- Remote driver with flex and plug for a quick and easy installation



*All dimensions in mm



Ordering Guide

Description	Circuit Power (W)	Wt (Kg)	Part No.
Chalice 150			
CHAL 150 LED1200-830 HF RSB FP	13.3	0.5	96627929
CHAL 150 LED1200-840 HF RSB FP	13.3	0.5	96627930
CHAL 150 LED1750-830 HF RSB FP	18.5	0.5	96627931
CHAL 150 LED1750-840 HF RSB FP	18.5	0.5	96627932
CHAL 150 LED2500-830 HF RSB FP	26.8	0.6	96627933
CHAL 150 LED2500-840 HF RSB FP	26.8	0.6	96627934
CHAL 150 LED1200-830 HFI-X RSB FP	13.3	0.5	
CHAL 150 LED1200-840 HFI-X RSB FP	13.3	0.5	
CHAL 150 LED1750-830 HFI-X RSB FP	18.5	0.5	
CHAL 150 LED1750-840 HFI-X RSB FP	18.5	0.5	
CHAL 150 LED2500-830 HFI-X RSB FP	26.8	0.6	
CHAL 150 LED2500-840 HFI-X RSB FP	26.8	0.6	
Chalice 200			
CHAL 200 LED1300-830 HF RSB FP	14.2	0.83	96627923
CHAL 200 LED1300-840 HF RSB FP	14.2	0.83	96627924
CHAL 200 LED2000-830 HF RSB FP	18.5	0.83	96627925
CHAL 200 LED2000-840 HF RSB FP	18.5	0.83	96627926
CHAL 200 LED2700-830 HF RSB FP	27	0.9	96627927
CHAL 200 LED2700-840 HF RSB FP	27	0.9	96627928
CHAL 200 LED1300-830 HFI-X RSB FP	14.2	0.83	
CHAL 200 LED1300-840 HFI-X RSB FP	14.2	0.83	
CHAL 200 LED2000-830 HFI-X RSB FP	18.5	0.83	
CHAL 200 LED2000-840 HFI-X RSB FP	18.5	0.83	
CHAL 200 LED2700-830 HFI-X RSB FP	27	0.9	
CHAL 200 LED2700-840 HFI-X RSB FP	27	0.9	
Attachments			
CHAL 150 FROSTED RING	-	-	96627651
CHAL 200 FROSTED RING	-	-	96627649

150, 200 - cut out diameter
 1200, 1300, 1750, 2000, 2500, 2700 - lumen category
 830, 840 - CRI>80, CCT 3000K, 4000K
 HF - standard no dimming, HFI-X - DALI dimming
 RSB - reflector satin finish

Shop



A stylish LED shop lightener to suit a wide range of display applications

- 38W LED deliver over 3000 lumens
- Colour rendering 80
- Wide beam angle 120°
- Complete with driver, and flex & plug
- Colour temperature 3000K (warm white), 4000K (cool white) & 5000K (daylight)
- Useful life L70 40,000 hours

Shop LED Rectangular

- Adjustable face 60°
- Cut-out 227 x 130mm

Shop LED Round

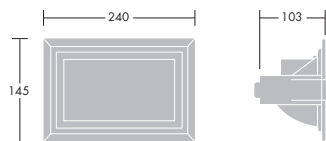
- Adjustable face 60°, rotatable 350°
- Cut-out 165-185mm

Materials and Finish

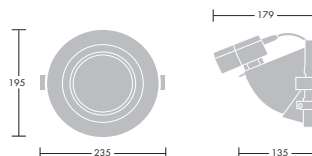
- Body and frame: Die-cast aluminium painted white
- Reflectors: Aluminium matt finished
- Lens: Stippled flat glass

Installation and Mounting

- Supplied with driver, flex and plug



Rectangular version



Round version

*All dimensions in mm



Ordering Guide

Description	Circuit Power (W)	Wt (Kg)	Part No.
Rectangular version			
SHOP LED 3000 38W L830 FP	38	1.7	96539477
SHOP LED 3000 38W L840 FP	38	1.7	96538369
SHOP LED 3000 38W L850 FP	38	1.7	96539478
Round version			
SHOP LED 3000 38W RND L830 FP	38	1.7	96540897
SHOP LED 3000 38W RND L840 FP	38	1.7	96540898
SHOP LED 3000 38W RND L850 FP	38	1.7	96540899

830,840,850 - CRI>80, CCT 3000K, 4000K, 5000K
RND - round

Rhine



A slimline energy efficient LED oyster

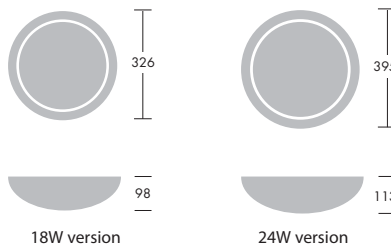
- High uniformity edge lit LEDs
- 18W and 24W LED's delivering high lumens output
- Colour rendering 80
- Colour temperature 3000K (wark white) & 4000K (cool white)
- Useful life L70 40,000 hours
- Opal acrylic twist-lock diffuser
- Easy to install without removing components
- Microwave sensor option

Materials and Finish

- Body: Aluminium
- Diffuser: Polycarbonate

Installation and Mounting

- Suitable for wall or ceiling mounting
- Quick and easy installation



*All dimensions in mm

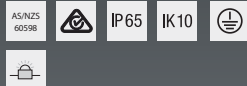


Ordering Guide

Description	Circuit Power (W)	Wt (Kg)	Part No.
LED			
RHINE LED 1250 18W L830	18	1.0	96541827
RHINE LED 1600 24W L830	24	1.3	96541828
RHINE LED 1250 18W L840	18	1.0	96542249
RHINE LED 1600 24W L840	24	1.3	96542250
RHINE LED 1250 18W L830 MWS	18	1.0	96542251
RHINE LED 1600 24W L830 MWS	24	1.3	96542252
RHINE LED 1250 18W L840 MWS	18	1.0	96542253
RHINE LED 1600 24W L840 MWS	24	1.3	96542254

1250, 1600 - lumen category
 830, 840 - CRI>80, CCT 3000K,4000K
 MWS - microwave sensor

Leopard



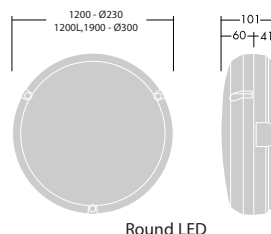
- 1200lm LED, direct replacement for 28W 2D and 1900lm LED, direct replacement for 38W 2D
- LED versions up to 90lm/W exceeds building regulation requirements
- Useful life L70 50 000 hours, equivalent to 13 years at 10 hours per day operation
- IP65, completely sealed to protect from dust, insects & water
- Integrated LED and driver platform reducing shadowing and improving light uniformity
- 4000K neutral white LED
- Integrated microwave presence sensor maximises energy saving potential

Materials and Finish

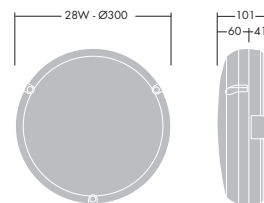
- Bodies: polycarbonate, white
- Diffusers: polycarbonate opal and clear honeycomb prismatic

Installation and Mounting

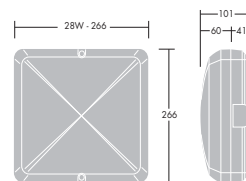
- Suitable for wall or ceiling mounting
- 25mm conduit side entry for through wiring
- 3 way terminal block for 2 x 2.5mm² cable
- Quick and easy installation



Round LED



Round CFL



Square CFL

*All dimensions in mm



Ordering Guide

Description	Circuit Power (W)	Wt (Kg)	Part No.
LED			
LEOPARD 1200 LED2 OP RD WH L840	13	0.95	96617046
LEOPARD 1200 LED2 OP RD L WH L840	13	1.22	96242233
LEOPARD 1200 LED2 MWS OP RD L WH L840	13	1.22	96242235
LEOPARD 1900 LED2 OP RD WH L840	20	1.45	96617051
LEOPARD 1900 LED2 MWS OP RD WH L840	20	1.45	96242237
Traditional			
LEOPARD 1X28W TC-DDEL HF OP RD WHI L840	25	1.8	96230494
LEOPARD 1X28W TC-DDEL HF OP SQ WHI L840	25	1.8	96230496
LEOPARD 1X28W TC-DDEL HF PR RD WHI L840	25	1.8	96230498
LEOPARD 1X28W TC-DDEL HF PR SQ WHI L840	25	1.8	96230500
Accessory			
LEOPARD VANDAL PROOF SCREW KIT	-	-	96010366

1200, 1900 - lumen category
 840 - CRI>80, CCT, 4000K
 WH, WHI - white finish
 MWS - microwave sensor
 OP- opal, PR - clear prismatic
 RD - round, SQ - square

Club



Stylish, tough wall or ceiling mounted luminaire with the emphasis on its slim section

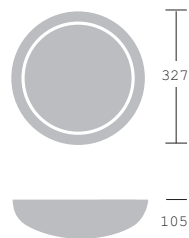
- Sealed to IP54
- Choice of bezel colour, complemented by an opal diffuser
- Energy saving sensor options, luminaire is activated when movement has been detected, then will switch off automatically
- Direct replacement for traditional 28W
- Useful life L70 50,000 hours

Materials and Finish

- Body and trim: injection moulded polycarbonate.
- Diffuser: opal polycarbonate
- Body and trim colours: white body with mod white or bright white or polished chrome trim

Installation and Mounting

- Suitable for surface mounting
- Cable entry into 3 way terminal block suitable to accept 2x2.5mm²



*All dimensions in mm



Ordering Guide

Description	Circuit Power (W)	Wt (Kg)	Part No.
Chrome finish			
CLUB 1000 LED2 OP RD CHR L840	13	1.4	96242253
CLUB 1000 LED2 MWS OP RD CHR L840	13	1.6	96242255
Mod white finish			
CLUB 1000 LED2 OP RD WH L830	13	1.4	96242277
CLUB 1000 LED2 MWS OP RD WH L830	13	1.6	96242278
CLUB 1000 LED2 OP RD WH L840	13	1.4	96617056
CLUB 1000 LED2 MWS OP RD WH L840	13	1.6	96242239
Bright white finish			
CLUB 1000 LED2 OP RD RAL9016 L830	13	1.4	96627748
CLUB 1000 LED2 MWS OP RD RAL9016 L830	13	1.6	96627749
CLUB 1000 LED2 OP RD RAL9016 L840	13	1.4	96627750
CLUB 1000 LED2 MWS OP RD RAL9016 L840	13	1.6	96627751

1000 - lumen category

830, 840 - CRI>80, CCT 3000K,4000K

OP - opal diffuser

MWS - microwave sensor

WH - MOD white, RAL9016 - bright white, CHR - white body chrome trim

RD- round

Novaline



A slim circular LED luminaire for wall or ceiling mounting, which blends with most architectural styles

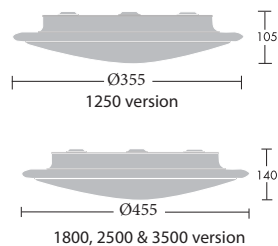
- Wide range of lumen packages
- High efficacy of >100lm/W
- Sleek design with a diffuser that can be removed without tools
- Sealed to IP40 with aluminium body
- Useful life L70 50,000 hours

Materials and Finish

- Body: spun aluminium – white finish (RAL 9016)
- Diffuser: opal polycarbonate

Installation and Mounting

- Wall or ceiling surface mounting for interior use
- 3-way mains terminal block



*All dimensions in mm



Ordering Guide

Description	Circuit Power (W)	Wt (Kg)	Part No.
LED			
NOVALINE LED1250-840 HF WH	11	1.2	96642682
NOVALINE LED1250-840 MWS WH	11	1.2	96642683
NOVALINE LED1250-830 HF WH	11	1.2	96642686
NOVALINE LED1250-830 MWS WH	11	1.2	96642687
NOVALINE LED1800-840 HF WH	15.5	2.2	96642690
NOVALINE LED1800-840 MWS WH	15.5	2.2	96642691
NOVALINE LED1800-830 HF WH	15.5	2.2	96642694
NOVALINE LED1800-830 MWS WH	15.5	2.2	96642695
NOVALINE LED2500-840 HF WH	22.5	2.2	96642696
NOVALINE LED2500-840 MWS WH	22.5	2.2	96642697
NOVALINE LED2500-830 HF WH	22.5	2.2	96642700
NOVALINE LED2500-830 MWS WH	22.5	2.2	96642701
NOVALINE LED3500-840 HF WH	32.5	2.2	96642702
NOVALINE LED3500-840 MWS WH	32.5	2.2	96642703
NOVALINE LED3500-830 HF WH	32.5	2.2	96642706
NOVALINE LED3500-830 MWS WH	32.5	2.2	96642707

1250, 1800, 2500, 3500 - lumen category
 830, 840 - CRI>80, CCT 3000K,4000K
 OP - opal diffuser
 MWS - microwave sensor
 WHI - white finish

Spot



A compact spotlight LED available with different reflector options, suitable for a range of applications including retail and display lighting

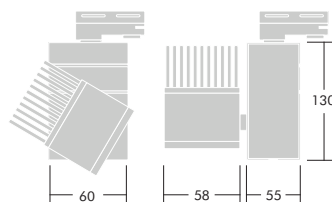
- Track mounted LED spotlight with integral driver and three circuit track adaptor (MT3)
- Colour rendering index 85
- Fully adjustable design with 350° rotation and 200° tilt
- Anodized black heat sink provides effective thermal management ensuring high output and long life
- Long life L70 50,000 hours
- Available in three finishes: white, silver and black
- Accessory for a surface mounting installation available on request
- Vertical box for compact installations

Materials and Finish

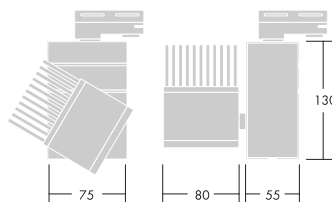
- Body: aluminium body available in white
- Reflector: aluminium faceted reflector

Installation and Mounting

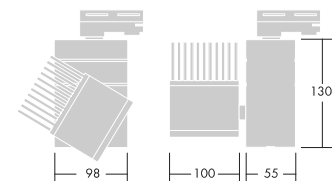
- Track mounted LED spotlight with integral driver simply plug in to universal three phase circuit track adaptor (MT3)
- Accessory for surface mounting application available on request



800 & 1000 versions



1500 version



2500 version

*All dimensions in mm



Ordering Guide

Description	Circuit Power (W)	Wt (Kg)	Part No.
LED			
SPOT LED800-830 MT3 FL WHI	13.5	0.55	96544684
SPOT LED800-830 MT3 WF WHI	13.5	0.55	96544678
SPOT LED800-840 MT3 FL WHI	13.5	0.55	96544687
SPOT LED800-840 MT3 WF WHI	13.5	0.55	96544681
SPOT LED1000-830 MT3 FL WHI	18	0.55	96544696
SPOT LED1000-830 MT3 WF WHI	18	0.55	96544690
SPOT LED1000-840 MT3 FL WHI	18	0.55	96544699
SPOT LED1000-840 MT3 WF WHI	18	0.55	96544693
SPOT LED1500-840 MT3 SP WHI	28	0.9	96540015
SPOT LED1500-840 MT3 FL WHI	28	0.9	96539140
SPOT LED1500-840 MT3 WF WHI	28	0.9	96539142
SPOT LED2500-830 MT3 SP WHI	40	0.9	96541798
SPOT LED2500-830 MT3 FL WHI	40	0.9	96541799
SPOT LED2500-840 MT3 SP WHI	40	0.9	96541804
SPOT LED2500-840 MT3 FL WHI	40	0.9	96541805
SPOT LED1500-830 MT3 SP WHI	40	0.9	96540014
SPOT LED1500-830 MT3 FL WHI	40	0.9	96539139
SPOT LED1500-830 MT3 WF WHI	40	0.9	96539141

Also available in black (BKL) and silver/grey (GRY)
 800, 1000, 1500, 2500 - lumen category
 830, 840 - CRI>85, CCT 3000K,4000K
 2500: SP-36°, FL-55°
 1500: SP-18°, FL-45°, WF-60°
 800&1000: FL-40°, WF-60°
 WHI - white finish

SuperTrack 2

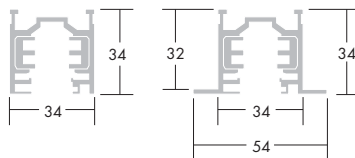


A versatile 3-circuit lighting track system, with a full range of power feeds, connectors, couplers and suspensions

- 16A track units in high quality extruded aluminium with three separately switchable circuits. Choice of mounting: surface or suspended, plus flanged option for suspended ceilings
- Compatible with universal adaptors provided on all Thorn mains voltage spotlights, including the Spot LED, Prospector and Graffiti families
- Visible polarity ridges aid electrical connection and mechanical alignment
- Extensive selection of power feed connector options allows alternative to live-end feed
- Versatile suspension system features height adjustment and rapid fixing to suspension clamps

Materials and Finish

- **Track:** Extruded aluminium section with natural, white or black finish, housing copper conductors
- **Connectors:** black or white polycarbonate



*All dimensions in mm

Feeds, Connectors and Couplers



Initial Feed L



Straight Connector



Coupler



Flexible Connector



X Connector



Central Feed



T Connector



L Connector

Polarity ridges



Central Feed



Connector L Inside



Coupler



Straight Connector



Connector L Outside



Initial Feed L



T Connector Outside



T Connector Inside

Ordering Guide

Description	Circuit Power (W)	Wt (Kg)	Dims (mm)W	Part No.
Supertrack 2 - Standard unit				
1M T3c MSF WH	-	-	1000	96108 044
2M T3c MSF WH	-	-	2000	96108 047
3M T3c MSF WH	-	-	3000	96108 050
4M T3c MSF WH	-	-	4000	96108 053
Supertrack 2 - Recessed unit				
1M T3c MRE WH	-	-	1000	96108054
2M T3c MRE WH	-	-	2000	96108055
3M T3c MRE WH	-	-	3000	96108056
4M T3c MRE WH	-	-	4000	96108057
Supertrack 2 - End caps				
END CAP 3C WH	-	-	29x34x34	96108059
Supertrack 2 - Feeds and connectors				
INITIAL FEED 3C P L WH	-	-	110x34x34	96108060
INITIAL FEED 3C P R WH	-	-	110x34x34	96108061
CENTRAL FEED 3C WH (not electrical)	-	-	187x33x33	96108064
COUPLER 3C WH	-	-	84x84x27	96108066
CONNECTOR 3C WH	-	-	84x84x27	96108068
T-CONNECTOR 3C P O-L WH	-	-	187x110x34	96108070
T-CONNECTOR 3C P O-R WH	-	-	187x110x36	96108072
L-CONNECTOR 3C P I WH	-	-	110x110x34	96108074
L-CONNECTOR 3C P O WH	-	-	110x110x36	96108076
X-CONNECTOR 3C WH	-	-	187x187x34	96108078
FLEX CONNECTOR 3C WH	-	-	297x34x34	96108080
Supertrack 2 - Suspension kits				
TUBE MRS KIT 1M WH	-	-	115x115x400	96108082
SUPERTRACK2 - TUBE MRS KIT 1M	-	-	-	96108083
THREADED ROD MRS KIT 1M WH	-	-	4x1000	96108084
STEEL CORD MSW1 KIT 2M WH	-	-	1.8x2000	96108086
STEEL CORD MSW1 KIT 5M WH	-	-	1.8x5000	96108088
SUSPENSION CLAMP WH	-	-	35x30x15	96108090
SUSP CLAMP INITIAL FEED WH	-	-	-	96108092
SUSP CLAMP CENTRAL FEED WH	-	-	-	96108094
SUSP CLAMP L-CONNECTOR WH	-	-	-	96108096
SUSP CLAMP T-CONNECTOR WH	-	-	-	96108098
SUSP CLAMP X-CONNECTOR WH	-	-	-	96108100
SuperTrack 2 - Accessories				
ENCLOSURE D50 CEILING WH	-	-	-	96108103
VERSATILE SUSPENSION DOME WH	-	-	-	96108104
FIXING CLAMP MRE	-	-	-	96108106
T-BAR FIXING CLAMP MSF	-	-	-	96108107
FIXING CLAMP (2X) KIT MSF	-	-	-	96108108
FIXING CLAMP (2X) KIT MSF	-	-	-	96108109
DISPLAY HOOK WH	-	-	-	96108120
POINT OUTLET 3C MSF WH	-	-	-	96108121
MOUNT KIT MRE POINT OUTL WH	-	-	-	96108123
SuperTrack 2 - Recessed covers				
INITIAL FEED COVER MRE WH	-	-	-	96108110
CENTRAL FEED COVER MRE WH	-	-	-	96108112
T-CONNECTOR COVER MRE WH	-	-	-	96108114
L-CONNECTOR COVER MRE WH	-	-	-	96108116
X-CONNECTOR COVER MRE WH	-	-	-	96108118

Also available in Grey / Black configurations.

T3C - track 3 circuit, WH - white, 1M - 1 metre, P - polarity, R - right.

SUSP - suspension, MRE - mounting recessed, MSF - mounting surface, MRS - mounting rigid support.

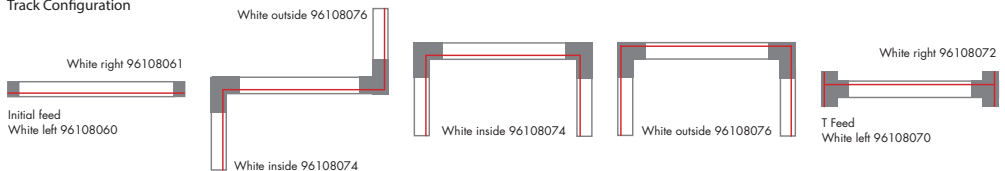
MSW - mounting swing,

L - left, OUTL - outlet O - outside, I - inside

Mounting and suspension options



Track Configuration



College

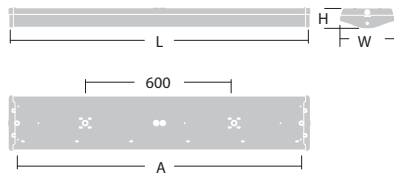


High performance surface/ suspended luminaire for schools, colleges and other educational establishments

- Clear prismatic diffuser in polycarbonate for specific light control and impact resistance
- Rigidly fixed diffuser held in place by screwed on polycarbonate end caps for improved diffuser security and vandal/impact resistance
- Appealing curved shape and smooth, dust limiting, outer surfaces
- A common body width for single and twin T8 and T5 fluorescent lamp options. Also available in LEDs
- Sealed to IP44
- Available with DALI/DSI digital dimming
- Easy installation and cleaning
- Asymmetric T8 wall washer version available
- Emergency lighting versions available

Materials and Finish

- Body and gear tray: white galvanised pre-painted steel.
- End caps: polycarbonate
- Diffuser: precision extruded clear prismatic polycarbonate



	Length (L)	Width (W)	Height (H)	Suspension Fixing (A)
T5 28W	1220	217	90	1150
T8 36W	1271	217	90	1200
LED 25W/50W	1220	217	90	1150

*All dimensions in mm

- Electronic driver/ballast

Installation and Mounting

- Two cable entry holes (Ø21.5mm) in the centre of the back spine
- Optional cable entry through each end cap. Fitting supplied with sealing grommets and 'quick-fix' horseshoe sliding washers for direct screw fixing to surface
- Standard BESA fixings. 5 x 2 x 1.5mm² piano key terminal block supplied for easy and quick looping.



Ordering Guide

Lamps to be ordered separately except LED versions

Description	Circuit Power (W)	Wt (Kg)	Part No.
LED			
COLLEGE LED 3700-840 L1200 PC CL	50	4.2	96540786
COLLEGE LED 3700-840 L1200 E2 PC CL*	50	4.5	96541889
COLLEGE LED 3700-840 L1200 HFI E2 PC CL*	50	4.5	96541890
COLLEGE LED 3700-840 L1200 HFI PC CL	50	4.2	96541888
COLLEGE LED 2500-840 L1200 PC CL	25	4.2	96545152
T5			
COLLEGE 1x28W HF PC CL	30.6	4	96205769
COLLEGE 1x28W HFD PC CL	30.8	4	96062869
COLLEGE 2x28W HF PC CL	61.2	4.1	96205778
COLLEGE 2x28W HF PC CL E2M*	60.2	6	96061593
COLLEGE 2x28W HFI PC CL	60.5	4.1	96549143
T8			
COLLEGE 1x36W HF PC CL	36.7	4.1	96205771
COLLEGE 1x36W HFI PC CL	36.7	4.1	96061734
COLLEGE 2x36W HF PC CL	80.0	4.2	96205780
COLLEGE 2x36W HF PC CL E2M*	70.7	5.8	96066831
COLLEGE 2x36W HFI PC CL	80.0	4.2	96067306
COLLEGE 1x36W HF PC CL RAS	36.7	4.3	96205772
Accessories			
WIRE SUSPENSION KIT 1.5M	-	0.15	96204619

2500, 3700 - LED lumen category

840 - CRI>80, CCT 4000K

L1200 - 1220mm length

HF - high frequency, HFI - digital dimming (DALI/DSI), HFD - digital dimming (DSI only)

RAS - Assymetric version

E2 - 2 hours emergency

*Refer P89 for emergency spacing table

Jupiter 3



The practical choice for slim and efficient direct/indirect lighting

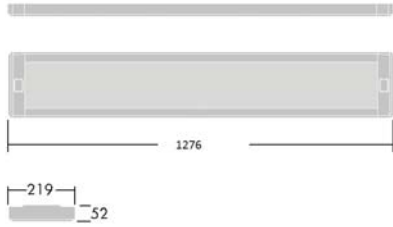
- Slim, lightweight luminaire in a simple, practical and robust design
- Maximise energy savings with highly efficient LED >85Lm/W
- Lighting to the task environment with surface direct (D) or suspended direct/indirect (DI), diffuser optic versions
- Quick and easy to install and maintain with self-balancing design, retained optic and the option for continuous row mounting
- DALI dimmable

Materials and Finish

- Body: sheet steel painted white
- Endcap: moulded in white polycarbonate
- MPT optic: microprismatic acrylic diffuser with white painted steel frame and anodised aluminium reflectors

Installation and Mounting

- Surface (D): Electrical connection via 20.5mm holes at end or centre into piano key terminal blocks.
- Suspended (DI): Luminaire is self-balancing and suspended via 2 adjustable 1.5m long quick lock single suspension wires (supplied)
- Suspended (DI): Electrical connection via pre-fitted LSOH white mains cable
- LED version: 1090mm fixing centres



*All dimensions in mm

- All versions are suitable for mounting end to end in continuous rows using corresponding connecting kit for mechanical connection and through wiring kit (sold separately)



Ordering Guide

Description	Circuit Power (W)	Wt (Kg)	Part No.
LED			
JUP3 LED D 2850 HFI-X MPT L840	34.8	4.4	96241846
JUP3 LED D 4200 HFI-X MPT L840	51.8	4.4	96241847
JUP3 LED DI 3900 HFI-X MPT ML6 L840	40.4	4.5	96241854
JUP3 LED DI 4700 HFI-X MPT ML6 L840	50.6	4.5	96241855
JUP3 LED D 2750 HFI-X MPT L830	34.8	4.4	96642593
JUP3 LED D 4050 HFI-X MPT L830	51.8	4.4	96642594
Accessories			
JUP3 CONNECT KIT TWIN LAMP*	-	-	96241824
JUP3 LED WIRE SUSPENSION KIT 1.5M (2pcs)	-	-	96242213

2750, 2850, 3900, 4200, 4050, 4700 - LED lumen output

830, 840 - CRI>80, CCT 3000K, 4000K

HFI-X - digital dimming (DALI)

System version available on request

*Continuous row connection kit for Twin Jupiter 3 luminaires.

Cadet

AS/NZS
60598

IP20



A slim profile square sided fluorescent batten range, with a selection of attachments available to suit a variety of lighting applications

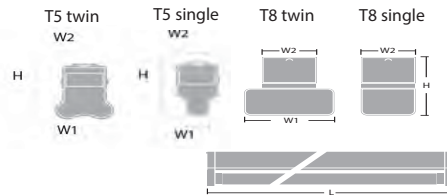
- Available in bare or prismatic diffused
- Built-in end cap spacer for easy accurate in-line mounting
- Double keyhole mounting holes
- Single and twin lamp options with bare or diffused options
- Dispersive reflector or galvanised wire guard attachment
- Emergency lighting versions available

Materials and Finish

- Body: steel painted white.
- End caps: Injection moulded polycarbonate in white.
- Diffuser: acrylic prismatic
- T5 with electronic ballast
- T8 with electronic or magnetic ballast

Installation and Mounting

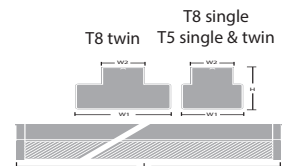
- 2-way and earth terminal block with capacity for 2 x 2.5mm² cables
- For installation in normal dry indoor atmospheres



Bare version

	Length (L)	Width (W1)	Width (W2)	Height (H)
18W single	615	52	52	80
18W twin	615	84	52	80
36W single	1225	52	52	80
36W twin	1225	84	52	80
28W single	1175	22	52	70
28W twin	1175	52	52	70

*All dimensions in mm



Diffused version

	Length (L)	Width (W1)	Width (W2)	Height (H)
18W single	617	77	55	90
18W twin	617	120	55	90
36W single	1225	77	55	90
36W twin	1225	120	55	90
28W single	1182	77	55	90
28W twin	1182	77	55	90

*All dimensions in mm

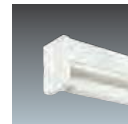


Ordering Guide

Supplied complete with lamps

Description	Circuit Power (W)	Wt (Kg)	Part No.
Bare T5 + T8			
CADET BARE 1x18W HF L840	20.5	1.6	96015588
CADET BARE 1x18W L840	25	1.8	96015598
CADET BARE 1x28W E2M L840*	33	2.5	96539109
CADET BARE 1x28W L840	32	2.0	96538999
CADET BARE 1x36W HF E2M L840*	37	2.6	96059805
CADET BARE 1x36W HF L840	36	2	96015633
CADET BARE 1x36W L840	42.5	3.3	96015643
CADET BARE 2x18W HF L840	38.5	1.7	96015679
CADET BARE 2x18W L840	41.5	1.9	96015682
CADET BARE 2x28W E2M L840*	63.5	3.5	96539110
CADET BARE 2x28W L840	62.5	3.0	96539000
CADET BARE 2x36W HF E2M L840*	73	3.3	96059843
CADET BARE 2x36W HF L840	72	3	96015700
CADET BARE 2x36W L840	84.5	3.2	96015707
Diffused T5 + T8			
CADET DIFFUSED 1x18W HF L840	20.5	1.7	96015743
CADET DIFFUSED 1x18W L840	25	1.9	96015738
CADET DIFFUSED 1x28W E2M L840*	33	2.6	96539111
CADET DIFFUSED 1x28W L840	32	2.1	96539003
CADET DIFFUSED 1x36W E2M L840*	37	2.8	96059841
CADET DIFFUSED 1x36W HF L840	36	2.1	96041781
CADET DIFFUSED 1x36W L840	42.5	2.3	96015754
CADET DIFFUSED 2x18W HF L840	38.5	1.8	96015785
CADET DIFFUSED 2x18W L840	41.5	2	96015778
CADET DIFFUSED 2x28W E2M L840*	63.5	3.6	96539112
CADET DIFFUSED 2x28W L840	62.5	3.1	96539004
CADET DIFFUSED 2x36W HF E2M L840*	73	3.7	96059845
CADET DIFFUSED 2x36W HF L840	72	3.1	96015806
CADET DIFFUSED 2x36W L840	84.5	3.3	96015794
Accessories T8 36W			
CADET DISPERSIVE REFLECTOR 1/2x36 R	-	-	96015824
CADET WIRE GUARD 136/236 GAL	-	-	96032344

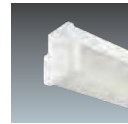
HF - high frequency with T8 lamp
 E2 - 2 hours maintained emergency
 L840 - lamp CRI>80, CCT 4000K
 *Refer P.89 for emergency spacing table



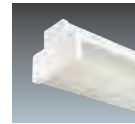
Single bare



Twin bare



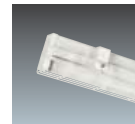
Single diffused



Twin diffused



Dispersive reflector



Wire guard

ClipLine

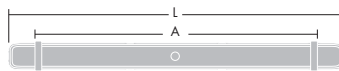
AS/NZS
60598

IP20



Energy efficient alternative to replace your traditional batten

- Slim LED batten for quick and easy installation with the clip bracket system
- Continuous line possibility for end to end installation
- CRI 80 and CCT 4000K
- Useful life L70 30,000 hours
- 1pc reflector kit option accessories
- Loop connection with flat TPS cable 2.5mm²



	Length (L)	Width (W)	Height (H)	Fixing Centre (A)
L600	600	60	60	435
L1200	1200	60	60	1035
L1500	1500	60	60	1335

*All dimensions in mm



Ordering Guide

Reflector to be ordered separately

Description	Circuit Power (W)	Wt (Kg)	Part No.
LED			
CLIPLINE LED L600 21 1600 L840	21	1.0	96542582
CLIPLINE LED L1200 21 1700 L840	21	1.5	96542583
CLIPLINE LED L1200 42 3400 L840	42	1.5	96542584
CLIPLINE LED L1500 52 4300 L840	52	1.7	96543105
Accessories			
CLIPLINE REFLECTOR L600 (1pc)	-	-	96542585
CLIPLINE REFLECTOR L1200 (1pc)	-	-	96542586
CLIPLINE REFLECTOR L1500 (1pc)	-	-	96543106

1600, 1700, 3400, 4300 - LED lumen category

840 - CRI>80, CCT 4000K

L600 - 600mm length, L1200 - 1200mm length, L1500 - 1500mm length

1 x reflector = asymmetric, 2 x reflectors = dispersive

PopPack

AS/NZS
60598

IK03

IP20



The original PopPack batten with integrated LED technology for ultra-low energy consumption and ideal upgrade for existing PopPack installations

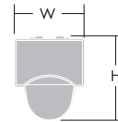
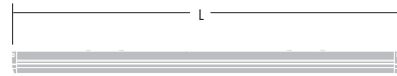
- Up to 67% energy reduction vs traditional switch start T8 battens. Direct replacement for 1x36W, 1x58W & 2x58W T8
- Further savings can be achieved via the DALI dimmable options
- >100lm/W highly efficient LED
- Useful life L70 50,000 hours

Materials and Finish

- Batten: pre-coated roll form steel, white (RAL9016)
- End caps/lamp holders: injection moulded polycarbonate, white
- Diffuser: textured opal acrylic

Installation and Mounting

- Direct ceiling mount via central BESA box mounting
- Through-wiring possible through central cable entry/exit or via knock out holes in the end caps
- 4/6 way terminal block with capacity for loop in stroke out of 2.5mm² cables
- Fixation of spine to ceiling, then connect via tool less plug & play connector the light engine and snap it onto the spine



	Length (L)	Width (W)	Height (H)
3000lm	1168	60	74
4500lm	1168	60	74
6500lm	1728	60	74

*All dimensions in mm



Ordering Guide

Description	Circuit Power (W)	Wt (Kg)	Part No.
LED			
POPPACK LED3000-840 HF	28	1.2	96242241
POPPACK LED3000-L840 HFI	28	1.7	96242243
POPPACK LED4500-840 HF	41	1.2	96242245
POPPACK LED4500-L840 HFI	41	1.7	96242247
POPPACK LED6500-840 HF	60	1.2	96242249
POPPACK LED6500-L840 HFI	60	1.7	96242251

3000, 4500, 6500 - LED lumen category

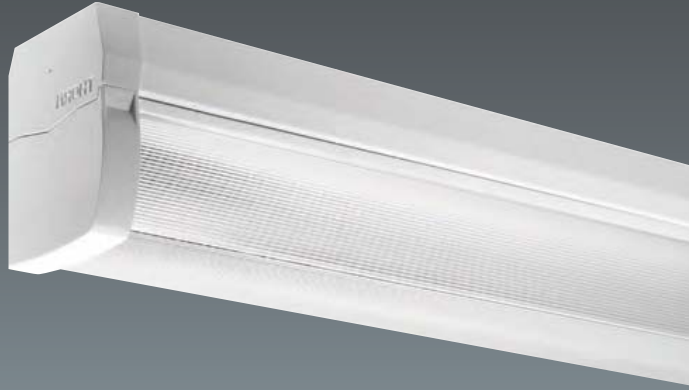
840 - CRI>80, CCT 4000K

HF - high frequency, HFI - digital dimming (DALI/DSI)

MaxiBatten

AS/NZS
60598

IP20

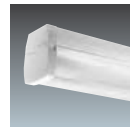
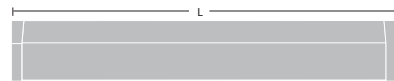


Wide body diffused batten suited to domestic, industrial, office and education applications

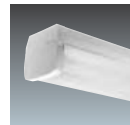
- Modular design
- Available in LED or T5 or T8 fluorescent
- Aesthetically pleasing design
- Large entry hole
- Cover clips on and screws in for added support
- Knock out holes in end caps
- LED version useful life L70 50,000 hours
- Emergency lighting versions available

Materials and Finish

- Body: robust post powder coated steel
- Diffuser: acrylic UV stabilised
- End caps: injection moulded polycarbonate
- LED/T5 with electronic driver / ballast
- T8 with electronic or magnetic ballast



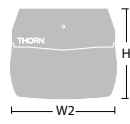
Single diffused



Twin diffused



Single diffused



Twin diffused

	Length (L)	Width (W1)	Width (W2)	Height (H)
LED	1229	89	116	98
18W	619	89	116	98
28W	1178	89	116	98

*All dimensions in mm



Ordering Guide

Supplied complete with lamps

Description	Circuit Power (W)	Wt (Kg)	Part No.
LED			
MAXIBATTEN DIFF LED 49W 840	49	2.5	96540109
T5 & T8			
MAXIBATTEN DIFF 1x18W HF L840	20.5	1.7	96039524
MAXIBATTEN DIFF 1x18W L840	25	2.5	96039512
MAXIBATTEN DIFF 1x28W HF L840	32	2.4	96039537
MAXIBATTEN DIFF 1x28W HF E2M L840*	33	2.6	96059344
MAXIBATTEN DIFF 1x28W HFI L840	33	2.2	96060720
MAXIBATTEN DIFF 1x36W E2M L840*	37	3.3	96059839
MAXIBATTEN DIFF 1x36W HF L840	36	2.3	96039525
MAXIBATTEN DIFF 1x36W HFI L840	37	2.3	96063705
MAXIBATTEN DIFF 1x36W L840	42.5	2.8	96039513
MAXIBATTEN DIFF 2x18W HF L840	38.5	2	96039527
MAXIBATTEN DIFF 2x18W HF E2M L840*	39.5	2.9	96059848
MAXIBATTEN DIFF 2x18W L840	41.5	2.5	96039515
MAXIBATTEN DIFF 2x28W HF E2M L840*	63.5	3.6	96060261
MAXIBATTEN DIFF 2x28W HF L840	62.5	2.8	96040265
MAXIBATTEN DIFF 2x28W HFI L840	64	2.9	96060191
MAXIBATTEN DIFF 2x36W HF L840	72	3.9	96039528
MAXIBATTEN DIFF 2x36W HF E2M L840*	73	4.9	96061148
MAXIBATTEN DIFF 2x36W HFI L840	72	3.9	96063706
MAXIBATTEN DIFF 2x36W L840	84.5	4.4	96039516

HF - high frequency, HFI - digital dimming (DALI/DSI)

E2 - 2 hour emergency

L840 - lamp CRI>80, CCT 4000K

*Refer P.89 for emergency spacing table

PPF

Project Plaster Frame



The Project Plaster Frame (PPF) is suitable for most T-bar recessed luminaires to enable installation in plaster board ceilings

- Choice of three sizes
- Can accommodate most standard luminaire sizes
- Simple installation in plaster ceilings
- Rigid steel frame in white finish

Materials and Finish

- White powder coated steel.

Installation and Mounting

- Flush installation in most plaster ceilings using supplied multifunctional mounting accessories

Ordering Guide

Description	Overall (Outer)	Opening Size	Cutout Size	Part No.
PPF 1200X300	1236 X 336	1176 X 276	1215 X 315	96062559
PPF 600X300	636 X 636	576 X 276	615 X 315	96065871
PPF 600X600	636 X 636	576 X 576	615 X 615	96065872

*All dimensions in mm

Royal

AS/NZS
60598

IP 40



A very efficient ultra slim LED panel luminaire fitting

- Ready for use, supplied with all components and Flex and Plug, a perfect solution for your refurbishment
- Rectangular (1200x300) or square version (600x600)
- Useful life L70 58,000 hours
- Maintenance free
- Suitable for office, retail, hospital and schools
- Switched or DALI dimmable versions
- 4000K (cool white)
- CRI>80

Materials and Finish

- Body: white painted aluminium frame
- Diffuser: opal high uniformity diffuser

Installation and Mounting

- Suitable for recessed mounting in T-bar ceilings
- Complete with pre-wired 1.5m flex and plug, and a separate driver
- For plaster board ceilings use PPF ordered separately



	Length (L)	Width (W)	Height (H)
6x6	597	597	10
12x3	1197	297	10

*All dimensions in mm

Ordering Guide

Description	Circuit Power (W)	Wt (Kg)	Part No.
LED			
ROYAL LED3400-840 12x3 FP	35	4	96543097
ROYAL LED3400-840 6x6 FP	35	4	96543099
ROYAL LED2600-840 12x3 FP	25	4	96543101
ROYAL LED2600-840 6x6 FP	25	4	96543103
ROYAL LED3400-840 HFIX 12x3 FP	35	4	96543194
ROYAL LED3400-840 HFIX 6x6 FP	35	4	96543196
ROYAL LED2600-840 HFIX 12x3 FP	25	4	96543198
ROYAL LED2600-840 HFIX 6x6 FP	25	4	96543200
Accessories			
ROYAL LED SURFACE MOUNTING KIT 12x3			96540976
ROYAL LED SURFACE MOUNTING KIT 6x6			96540977

2600, 3400 - LED lumen category

840 - CRI>80, CCT 4000K

HFIX - dimming with DALI



Sustain 3

AS/NZS
60598

IP40

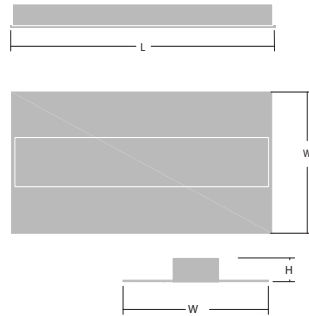


A new LED recessed diffuser or louvre troffer luminaire with excellent efficiency and full custom capability

- High efficiency LED fitting available in 1500lm, 2700lm & 3800lm versions with micro prismatic diffuser or satinbrite aluminium louvre
- High colour rendering CRI>80 as standard and CRI>90 on clinical versions
- CCT 4000K (cool white)
- DALI/DSI driver available on the HFI version
- Emergency LED version available on the EL2 version
- UGR 19 capability, suitable for Green Star projects
- Environmentally friendly - no mercury or any other hazardous substances
- Air handling available on request
- Emergency lighting versions available
- IPART & VEET approved

Installation and Mounting

- Suitable for most t-bar ceilings
- Supplied complete with flex and plug
- For plaster board ceilings use PPF ordered separately



	Length (L)	Width (W)	Height (H)
6x3	595	295	72
12x3	1195	295	72

* All dimensions in mm



Ordering Guide

Description	Circuit Power (W)	Wt (Kg)	Part No.
Standard			
SU3 LED3800-840 12x3 MPT FP	35	3.7	96544122
SU3 LED2700-840 12x3 MPT FP	26	3.7	96544123
SU3 LED2700-840 12x3 SB1 FP	26	3.7	96544124
SU3 LED1500-840 6x3 MPT FP	16	2.7	96544125
SU3 LED2700-840 12x3 MPT EL2 FP*	26	3.7	96544126
Dimmable			
SU3 LED3800-840 12x3 HFI MPT FP	35	3.7	96544127
SU3 LED2700-840 12x3 HFI MPT FP	26	3.7	96544128
SU3 LED2700-840 12x3 HFI SB1 FP	26	3.7	96544129
SU3 LED1500-840 6x3 HFI MPT FP	16	2.7	96544130
SU3 LED2700-840 12x3 HFI MPT EL2 FP*	26	3.7	96544131
Clinical observation application***			
SU3 LED3800-940 12x3 MPT FP	35	3.7	96545323
SU3 LED2700-940 12x3 MPT FP	26	3.7	96545324
SU3 LED1500-940 6x3 MPT FP	16	2.7	96545325
Accessories			
MCE 6x3 KIT**	-	-	96542892
MCE 12x3 KIT**	-	-	96542894

1500, 2700, 3800 - lumen category
 840 - CRI>80, CCT 4000K; 940 - CRI>90, CCT 4000K
 HFI - digital dimming (DALI/DSI)
 MPT - microprismatic diffuser
 SB1 - satinbrite aluminium louvre
 EL2 - 2 hour emergency

*Refer P.89 for emergency spacing table

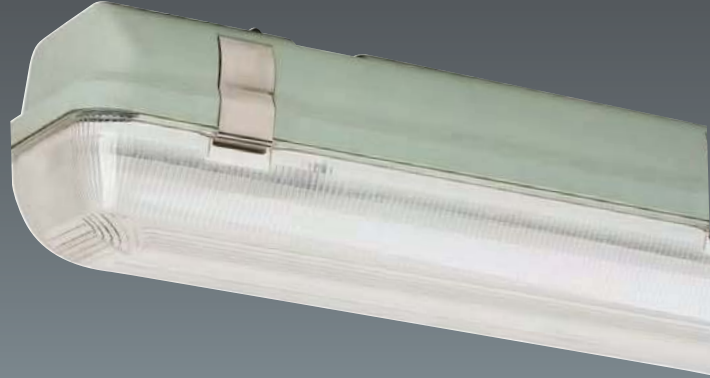
**Ceiling surface mounting kit available on request

*** Complies to AS/NZS1680.2.5 for cyanosis observation index (COI)

WeatherForce

AS/NZS
60598

IP65



A robust linear IP65 water resistant LED or fluorescent luminaire, specifically designed for general outdoor applications

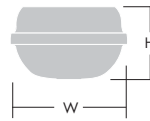
- A deep sealing channel to ensure IP65 resistance
- UV stabilised polycarbonate diffuser
- Available in LED, T5 or T8 light source options
- LED versions have a L70 rating of 50,000 hrs at Ta 40°
- Emergency lighting versions available

Materials and Finish

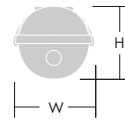
- Body: canopy injection moulded polycarbonate in light grey
- Diffuser: injection moulded UV impact resistant clear polycarbonate
- Gear tray: sheet steel, white powdercoat paint finish
- Toggles: stainless steel
- LED/T5 with electronic driver/ballast
- T8 with electronic or magnetic ballast

Installation and Mounting

- Cable entry positions at each end of fitting. Screw fixing through identified locations in the back of fitting
- Toggles are easy and quick to close by hand. (Basic tool required to open toggles)



LED/twin lamp



Single lamp

	Length (L)	Width (W)	Height (H)
LED L600	660	155	112
LED L1200	1270	155	112
14/18W single	660	100	112
14/18W twin	660	155	112
28/36W single	1270	100	112
28/36W twin	1270	155	112
49/58W single	1570	100	112
49/58W twin	1570	155	112

*All dimensions in mm



Ordering Guide

Supplied complete with lamps

Description	Circuit Power (W)	Wt (Kg)	Part No.
LED			
WF LED 2300 HF L1200 L840	-	-	96542602
WF LED 2300 HF L600 L840	27	2.4	96539546
WF LED 2300 HFI L600 L840	28	2.4	96539548
WF LED 4800 HF L1200 L840*	51	3.2	96539545
WF LED 4800 HF EL2 L1200 L840	51	5	96541099
WF LED 4800 HFI L1200 L840	-	-	96539547
T5 + T8			
WF 1x18W HF L840	18	2.3	96038935
WF 1x18W L840	18	2.7	96038931
WF 1x28W HF E2M L840	30.4	3	96059345
WF 1x28W HF L840	28	2.5	96058255
WF 1x28W HFI E2X L840*	-	-	96060929
WF 1x28W HFI L840	-	-	96059230
WF 1x36W HF E2M L840*	39	3	96059784
WF 1x36W HF L840	36	2.5	96038936
WF 1x36W L840	36	2.9	96038932
WF 2x18W HF E2M L840*	35.3	2.9	96040892
WF 2x18W HF L840	36	2.4	96038937
WF 2x18W L840	36	2.8	96038933
WF 2x28W HF E2M L840*	60.2	3.7	96058445
WF 2x28W HF L840	56	3.2	96058252
WF 2x28W HFI 840	60.5	3.8	96059921
WF 2x28W HFI E2X L840*	-	-	96060263
WF 2x36W HF E2M L840*	70.7	3.7	96060109
WF 2x36W HF L840	72	3.2	96038938
WF 2x36W L840	72	4.2	96038934
Accessories			
WALL MOUNT BRACKET GAL - W/FORCE - 1PCE	-	-	96062151
WF SINGLE LAMP MOUNTING KIT	-	-	96039252
WF TWIN LAMP MOUNTING KIT	-	-	96039253

2300, 4800 - LED lumen output

840 - CRI>80, CCT 4000K

HF - high frequency, HFI - digital dimming (DALI/DSI)

L600 = 660mm, L1200 = 1270mm

E2 - 2 hour emergency

*Refer P:90 for emergency spacing table

Poseidon

AS/NZS
60598

IP65

IK08



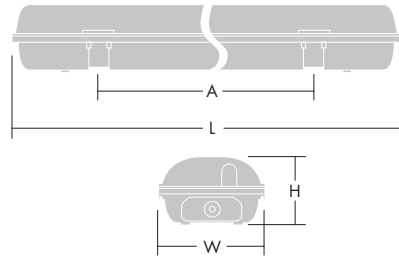
- 2000lm, 4000lm and 6000lm LED, one for one replacement for traditional weatherproof luminaire
- Useful life L70 50,000 hours
- Color rendering >80
- Color temperature 4000K
- Efficacy 95lm/W
- Suitable for operation temperature range -20°C to 40°C

Materials and Finish

- Heat resisting polycarbonate body with stainless steel clips
- Utilize the latest LED technology for use in hospitality, commercial, retail and industry

Installation and Mounting

- Ready to install
- Quick and easy installation with the quick-fix bracket included
- Suitable for 16mm² cable
- Supplied completed with cable gland and fixing screws



	Length (L)	Width (W)	Height (H)	Fixing Centre (A)
19W	658	158	101	400
41W	1268	158	101	900
70W	1568	158	101	900

* All dimensions in mm



Ordering Guide

Description	Circuit Power (W)	Wt (Kg)	Part No.
LED			
POSEIDON LED 2000-840 L600	19	1.5	96545190
POSEIDON LED 4000-840 L1200	41	1.5	96545191
POSEIDON LED 6000-840 L1500	70	3.0	96545192

2000, 4000, 6000 - LED lumen category

840 - CRI>80, CCT 4000K

L600 - 658mm length, L1200 - 1268mm length, L1500 - 1568mm length

X-Force



A range of specialist fluorescent and LED luminaires for harsh environment



ImpactForce

- A rugged, tough luminaire designed to withstand impacts of up to IK07
- Suitable for a wide range of indoor or semi-outdoor applications
- Other suitable locations include car parks and pedestrian subways
- High impact polycarbonate diffuser



CorrosionForce

- A high performance luminaire designed to withstand aggressive atmospheres laden with salts, acids and mineral soils
- Typical applications include food processing areas, milk dairies or where specialised cleaning agents are used
- Corrosion resistant acrylic diffuser



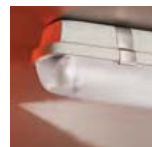
ColdForce

- A high performance luminaire designed to use in low temperature environments
- Typical applications such as chill rooms and cold stores
- Enable operation at temperatures as low as -30°C
- High impact polycarbonate diffuser
- Industrial high frequency ballast
- Supplied complete with low temperature overtube for fluorescent lamp



HeatForce

- A high performance luminaire designed to use in applications where ambient temperature up to 65°C
- High impact polycarbonate diffuser
- High temperature industrial ballast



Ordering Guide

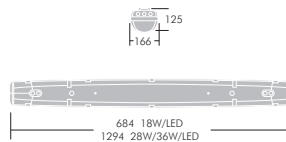
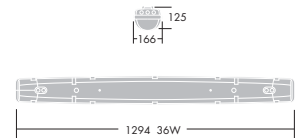
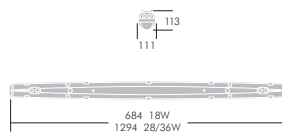
Lamps to be ordered separately except LED versions

Description	Circuit Power (W)	Wt (Kg)	Part No.
ImpactForce - LED, T5 + T8			
IMPACTF2 LED4500 PC HFI L1500 L840	36	3.2	96627497
IMPACTF2 LED7000 PC HFI L1500 L840	51.3	3.2	96627499
IMPACTF2 LED 2500 HF L600 L840	28.4	1.6	96542734
IMPACTF2 LED 2500 HFI L600 L840	28.4	1.6	96542736
IMPACTF2 LED 5000 HF L1200 L840	53.5	3.5	96542735
IMPACTF2 LED 5000 HFI L1200 L840	53.5	3.5	96542737
IMPACTF2 1x18W HF	18.5	0.9	96234892
IMPACTF2 1x28W HF	31.5	1.9	96234392
IMPACTF2 1x28W HFI	30.5	1.9	96240392
IMPACTF2 1x28W HF E2M*	30.5	2.9	96061314
IMPACTF2 1x36W HF	35.5	2.7	96234306
IMPACTF2 1x36W HF E2M*	35.5	2.9	96061316
IMPACTF2 2x18W HF	36.5	1.6	96234893
IMPACTF2 2x18W HF E2M*	36.5	2.6	96061319
IMPACTF2 2x28W HF	62	2.6	96234436
IMPACTF2 2x28W HFI	60.5	2.6	96549228
IMPACTF2 2x28W HF E2M*	60.5	3.6	96061315
IMPACTF2 2x36W HF	72	3.5	96234358
IMPACTF2 2x36W HF E2M*	72	3.5	96061317
CorrosionForce - LED, T5 + T8			
CORRF2 LED4500 AC HFI L1500 L840	36	2	96627498
CORRF2 LED7000 AC HFI L1500 L840	51.3	2	96627500
CORRF2 LED 2500 HF L600 L840	28.4	1.6	96542728
CORRF2 LED 2500 HFI L600 L840	28.4	1.6	96542730
CORRF2 LED 5000 HF L1200 L840	53.5	3.5	96542729
CORRF2 LED 5000 HFI L1200 L840	53.5	3.5	96542731
CORRF2 1x18W HF	18.5	0.9	96234928
CORRF2 1x28W HF	31.5	1.9	96234544
CORRF2 1x36W HF	35.5	1.9	96234474
CORRF2 2x18W HF	36.5	1.6	96234929
CORRF2 2x28W HF	62	2.7	96234588
CORRF2 2x28W HFI	60.5	2.6	96240508
CORRF2 2x36W HF	72	3.5	96234510
CORRF2 2x36W HF E2M*	72	3.5	96061323
ColdForce - T8			
COLDF2 1x36W IHF	35.5	1.9	96234623
COLDF2 2x36W IHF	72	2.82	96234625
HeatForce - T8			
HEATF2 1x36W IHF	35.5	2.9	96234627

2500, 4500, 5000, 7000 - LED lumen category
 840 - CRI>80, CCT 4000K
 HF - high frequency, HFI - digital dimming (DALI/DSI)
 L600 - 684mm length, L1200 - 1294mm length, L1500 - 1594 length
 IHF - industrial high frequency
 E2 - 2 hour emergency
 *Refer P.90 for emergency spacing table

Materials and Finish

- Canopy: glass-fibre reinforced polyester
- Diffuser: with linear prisms
- Gasket: expanded polyurethane
- Toggles: stainless steel
- Gear tray: steel, white enamelled finish
- Emergency lighting versions available



*All dimensions in mm



Gladiator

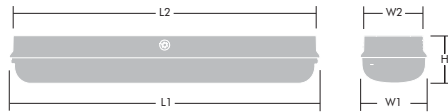


A very high impact resistant luminaire for harsh environments to suit application in ambient temperatures of up to 40°C

- Specifically designed diffuser to withstand high impacts up to IK10
- Unique Safe-T Locking System (SLS) making it almost impossible to access the interior of the fitting without the correct tools
- Scientifically developed rear gaskets, side entry cable glands and rear inverted entry cable glands allowing ingress protection to be maintained at IP66 after installation
- Available in T5, T8 or LED
- Also available with eSMART MWS sensor
- Emergency lighting versions available

Materials and Finish

- **Body:** die-cast aluminium finished dark grey powder coat
- **Diffuser:** polycarbonate
- **Safe-T Locking System (SLS):** thermoplastic alloy of polycarbonate and acrylonitrile butadiene styrene (ABS)
- **Gasket:** liquid poured



	Overall Length (L1)	Length (L2)	Overall Width (W1)	Width (W2)	Height (H)
18W T8	756	737	163	144	115
26W LED	756	737	163	144	115
28W T5	1335	756	163	144	115
36W T8	1335	756	163	144	115
49W LED	1335	756	163	144	115

*All dimensions in mm



Ordering Guide

Lamps to be ordered separately except LED versions

Description	Circuit Power (W)	Wt (Kg)	Part No.
LED			
GLADIATOR LED 2000 26W HF L840	26	4.8	96538209
GLADIATOR LED 2000 26W HF EL2 L840*	26		96540463
GLADIATOR LED 2000 26W HFI MWS L840	26	4.9	96538211
GLADIATOR LED 4000 49W HF L840	49	8	96538210
GLADIATOR LED 4000 49W HF EL2 L840*	49	8	96540412
GLADIATOR LED 4000 49W HFI MWS L840	49	8.1	96538212
Traditional T5 + T8			
GLADIATOR 1x18W			96538173
GLADIATOR 1x18W HF	18	4.8	96539397
GLADIATOR 1x18W HF EL2*	18	5.2	96538201
GLADIATOR 1x28W HF	30.4	8	96538190
GLADIATOR 1x28W HF EL2*	31	8.4	96538206
GLADIATOR 1x28W HFI	30.5	8	96538194
GLADIATOR 1x36W			96538174
GLADIATOR 1x36W HF	35	8	96539399
GLADIATOR 1x36W HF EL2*	35	8.4	96538202
GLADIATOR 2x18W			96538175
GLADIATOR 2x18W HF	36	4.8	96539398
GLADIATOR 2x18W HF EL2*	36	5.2	96538203
GLADIATOR 2x28W HF	60.2	8	96538192
GLADIATOR 2x28W HF EL2*	61	8.1	96538208
GLADIATOR 2x28W HFI	60.5	8	96538196
GLADIATOR 2x36W	70	8	96538176
GLADIATOR 2x36W HF	70	8	96539400
GLADIATOR 2x36W HF EL2*	70	8.4	96538204
GLADIATOR 2x36W HFI	68.5	8	96538184
GLADIATOR 2x36W HFI MWS	68.5	8.1	96538188
Accessories			
SURFACE MOUNT QUICKFIX BRACKET KIT	-	-	96538244
SURFACE MOUNT SECURE BRACKET KIT	-	-	96538245
GLADIATOR SP SECURITY ALLEN KEY	-	-	96539525

2000, 4000 - LED lumen category

840 - CRI>80, CCT 4000K

HF - high frequency, HFI - digital dimming (DALI/DSI), MWS - esmart sensor

EL2 - 2 hour emergency

*Refer P.89 for emergency spacing table

EcoLine HighBay

AS/NZS
60598

IP20

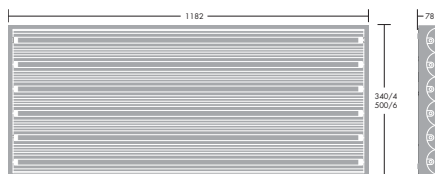


A range of powerful fluorescent luminaires designed for industrial applications

- 4 or 6 lamp configuration
- Electronic Control Gear with auto voltage regulation
- Instant start and restart (not possible with highbays that use HID lamps)
- Quick and easy installation with pre-wired 1.5m flex and 3 pin plug
- PC industry ballast for IHF versions for higher ambient temperatures (Ta 42°C)
- Suitable for factories, workshops and warehouses

Materials and Finish

- **Body:** white painted steel
- **Reflector:** very high reflective anodized aluminium



*All dimensions in mm

Ordering Guide

Lamps to be ordered separately

Description	Circuit Power (W)	Wt (Kg)	SAP Code
T5			
ECO-LINE HIGHBAY 4x54W HF	-	-	96062448
ECO-LINE HIGHBAY 4x54W HFI	-	-	96064155
ECO-LINE HIGHBAY 4x54W IHF	54	-	96063103
ECO-LINE HIGHBAY 6x54W HFI	-	-	96063251
ECO-LINE HIGHBAY 6x54W IHF	54	-	96063104
Accessories			
ECO-LINE SUSPENSION KIT - 6M	-	-	96065132

IHF - industry heavy duty high frequency ballast

HF - standard high frequency ballast

HFI - high frequency digital dimmer (DALI/DSI)

HiPak

AS/NZS
60598

IP65

IK08



A single point suspension high bay to save you time, energy and money

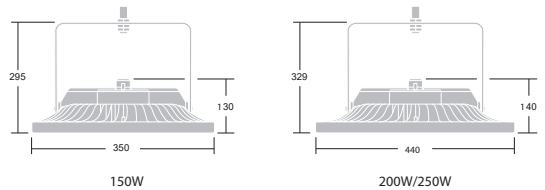
- Direct one-for-one replacement for HID high bays, with up to 46% energy saving
- Plug and play connection for rapid installation
- Cooling fin housing design allows air flow through the luminaire and prevents overheating of components
- Precise lens technology provides light exactly where it is needed wide beam (WD) or rack distribution (RD) for aisle lighting
- Useful life L70 50,000 hours @ 25°C
- Efficacy 100lm/w
- Colour rendering > 80
- Colour temperature 4000K

Materials and Finish

- Housing: die cast aluminium
- Lens: polycarbonate

Installation and Mounting

- Supplied pre-wired with a quick connect plug
- Wall mount and pendant mount brackets to be ordered separately



*Drawings shown with stirrup accessory bracket
All dimensions in mm



*Drawing shown with fixing hook as standard

Ordering Guide

Description	Circuit Power (W)	Wt (kg)	Part No.
Wide distribution			
HIPAK LED15000-840 HF	146	6.5	96642741
HIPAK LED15000-840 HFIX	146	6.5	96642742
HIPAK LED20000-840 HF	200	8.0	96642749
HIPAK LED20000-840 HFIX	200	8.0	96642750
HIPAK LED25000-840 HF	246	8.0	96642757
HIPAK LED25000-840 HFIX	246	8.0	96642758
Rack aisle narrow distribution			
HIPAK LED15000-840 HF RK	150	6.5	96642745
HIPAK LED15000-840 HFIX RK	150	6.5	96642746
HIPAK LED20000-840 HF RK	200	8.0	96642753
HIPAK LED20000-840 HFIX RK	200	8.0	96642754
HIPAK LED25000-840 HF RK	250	8.0	96642761
HIPAK LED25000-840 HFIX RK	250	8.0	96642762
Accessories			
HIPAK STIRRUP 150W MCE/MWA (6pcs)	-	-	96642765
HIPAK STIRRUP 200/250W MCE/MWA (6pcs)	-	-	96642914

15000, 20000, 25000 - LED lumen category
840 - CRI>80, CCT 4000K
HF - high frequency, HFIX - digital dimming (DALI/DSI)

Primata Value

AS/NZS
60598

IP20



Suitable for ceiling fixing or suspended mounting and is designed for rapid, tool-free installation. Available in both LED and T5 trunking systems

Primata LED

- Various lumen outputs, from 7400lm or 11000lm
- LED luminaire available in 2m and 3m lengths
- Excellent luminaire efficacy of up to 140lm/W
- Three distributions - wide beam, narrow beam and double asymmetric
- Exceptional lifetime L90 50,000 hours
- Colour temperature: 4000K
- CRI: 80

Primata T5 fluorescent

- 35/49/80W - multiwatt electronic ballast (HFM)
- Single and twin lamp options
- Available in single, end to end and double lamp lengths
- A range of lighting distributions: six reflectors and two housings

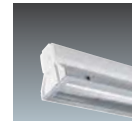
Materials and Finish

- Mounting kits: Stainless steel
- Luminaire and infills: Roll-formed sheet steel in white polyester lacquered finish
- End caps: plastic

Installation and Mounting



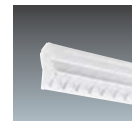
T5 white reflector



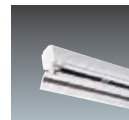
T5 IP50 housing



T5 asymmetric



T5 louvre housing



T5 double asymmetric

- A trunking system that enables you to create continuous lines of light for ceiling fixing or suspended mounting on wire or chains
- All modules come supplied with plug-in 7-pole through wiring and can be joined when slotted together
- Designed for tool-free mechanical and electrical connection for rapid installation
- Feed and end caps to be ordered separately
- Optics, accessories and end caps clip onto the luminaire without tools

Ordering Guide

Lamps to be ordered separately except LED versions

Description	Circuit Power (W)	Wt (Kg)	Part No.
LED & TS power feed + fixing			
PRIM FEED	-	-	96627277
PRIM FIX	-	-	96627406
PRIM FIX/CAD	-	-	96627407
PRIM FIX/CH	-	-	96627413
PRIM MSW1 1M + CADDY CLIP	-	-	96627411
PRIM MSW1 2M + CADDY CLIP	-	-	96627412
PRIM MSW1 5M + CADDY CLIP	-	-	96627408
2M LED luminaire			
PRIMATA L2000 LED7400 A/A HF END SET	59	4.7	96627512
PRIMATA L2000 LED7400 A/A HF SET	59	5.6	96627511
PRIMATA L2000 LED7400 NB HF END SET	57	4.7	96627358
PRIMATA L2000 LED7400 NB HF SET	57	5.6	96627357
PRIMATA L2000 LED7400 WB HF END SET	57	4.7	96627356
PRIMATA L2000 LED7400 WB HF SET	57	5.6	96627355
3M LED luminaire			
PRIMATA L3000 LED11000 A/A HF END SET	83	7.2	96627516
PRIMATA L3000 LED11000 A/A HF SET	83	8.3	96627515
PRIMATA L3000 LED11000 NB HF END SET	85	7.2	96627352
PRIMATA L3000 LED11000 NB HF SET	85	8.3	96627351
PRIMATA L3000 LED11000 WB HF END SET	85	7.2	96627350
PRIMATA L3000 LED11000 WB HF SET	85	8.3	96627349

7400, 11000 - LED lumen category
 A/A - double asymmetrical
 NB - narrow beam, WB - wide beam
 HF - electronic high frequency fixed output driver



Description	Circuit Power (W)	Wt (Kg)	Part No.
LED blank infill trunking			
PRIM L750 LED INFILL SET	-	2.4	96627326
PRIM L1000 LED INFILL SET	-	2.9	96627327
PRIM L1500 LED INFILL SET	-	4	96627328
PRIM L2000 LED INFILL SET	-	5.3	96627324
PRIM L3000 LED INFILL SET	-	7.7	96627325
LED end caps			
PRIMATA ENDCAP LED (PAIR)	-	-	96627318
Single length TS luminaires (1x Single Lamp)			
PRIMATA L1471 1/35/49/80W HFM END SET	-	3	96627340
PRIMATA L1471 1/35/49/80W HFM SET	-	3.7	96627339
SINGLE LENGTH TS LUMI-NAIRES (1x Twin Lamp)			
PRIMATA L1471 2/35/49/80W HFM END SET	-	2.85	96627341
PRIMATA L1471 2/35/49/80W HFM SET	-	3.85	96627334
Double length TS luminaires (1x Single/Twin Lamp)			
PRIMATA L2941 1x1/35/49/80W HFM SET	-	6	96627342
PRIMATA L2941 1x2/35/49/80W HFM SET	-	7	96627338
Double length TS luminaires (2x Single Lamp)			
PRIMATA L2941 2x1/35/49/80W HFM END SET	-	2.85	96627335
PRIMATA L2941 2x1/35/49/80W HFM SET	-	7	96627333
Double length TS luminaires (2x Twin Lamp)			
PRIMATA L2941 2x2/35/49/80W HFM END SET	-	7	96627337
PRIMATA L2941 2x2/35/49/80W HFM SET	-	7	96627336
TS reflectors + housings			
PRIM A/A 35/49/80 SET	-	-	96627310
PRIM A/A GLARE CONTROL 35/49/80 SET	-	-	96627311
PRIM ASY 35/49/80 SET	-	-	96627309
PRIM HLS I AC WH 35/49/80 IP50 SET	-	-	96627302
PRIM HLW PF 35/49/80 SET	-	-	96627300
PRIM NB 35/49/80 SET	-	-	96627307
PRIM NB INT 35/49/80 SET	-	-	96627308
PRIM R WH PP 35/49/80 SET	-	-	96627299
PRIM WB 35/49/80 SET	-	-	96627301
TS optics + blank infills			
PRIM L735 TS INFILL SET	-	-	96627304
PRIMATA L1471 TS INFILL SET	-	-	96627296
PRIMATA L2941 TS INFILL SET	-	-	96627297
TS end caps			
PRIMATA END CAP TS (PAIR)	-	-	96627284
PRIM HLW END CAP (PAIR)	-	-	96627286

A/A - double asymmetric, ASY - asymmetric
 NB - narrow beam, NB INT - narrow beam intense, WB - wide beam
 R WH - white reflector
 HLS - IP50 housing, HLW - louvered housing

SCAN NOW
 for more information
 Primata Value Brochure



http://www.thornlighting.com/PDB/resources/teaser/EN/TLG_Primata.pdf

D-CO LED Floodlights



Mini



Medi



Maxi



Flood2



Mini recessed

- Miniature, recessed, round walkover luminaire
- LEDs in warm white 3000K
- Supplied pre-wired with remote gear, recessed box, plastic end cap, connectors and 3way connection box
- Available in kit form - 6 fittings, individually pre-wired with recessed box, plastic end cap and 8way connection box containing gear and connectors. If a single LED fails, the other LEDs continue to operate.
- Choice of clear or frosted glass in stainless steel frame
- Twin domed window option
- Low temperature 'touch'

Medi recessed

- Medium sized, recessed round walkover luminaire
- LEDs in warm white 3000K
- Supplied pre-wired with recessed box and plastic end cap
- Integral gear
- Frosted glass
- Low temperature 'touch'

Maxi recessed

- Large sized, recessed round walkover luminaire
- Clear glass
- LEDs in warm white 3000K
- Supplied pre-wired with recessed box and plastic end cap
- Halogen and compact fluorescent versions

- Integral gear
- Tilt: +/- 24° for the LED version,
+/- 42° for the dichroic version,
+/- 22° for the compact fluorescent version

Flood light

- Circular compact floodlight with smooth edges
- LEDs in warm white 3000K
- Visor to limit glare
- Integral gear
- Supplied pre-wired

Materials and Finish

- Body: aluminium, finished in grey
- Glass: toughened glass
- Gasket: anti-ageing silicone
- Stirrup: aluminium finished in grey
- Connection boxes body: PC/ABS blend

Installation and Mounting

Recessed units

- In ground: To ensure efficient drainage, gravel must be used to a depth of 300mm beneath the housing.
- The plastic end cap prevents ingress of concrete during installation.
- All the fittings are supplied with 5m cable. Single Mini units are supplied pre-wired with cable with remote gear, recessed box, plastic end cap, connectors and 3 way connection box. Mini kit luminaires are individually pre-wired with cable and supplied with an 8 way connection box, containing gear and connectors - including a specific connector for through wiring.

Floodlights

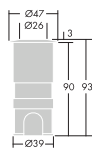
- Supplied pre-wired with 5m cable



Ordering Guide

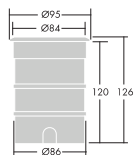
Description	Circuit Power (W)	Wt (Kg)	Part No.
LED recessed			
D-CO R LED MINI 6/1X1.2W WHI 3K FR KIT	6 x1.2	1.4	96536651
D-CO R LED MEDI 1X1.2W WHI 3K FR	3	0.7	96536652
D-CO R LED MAXI 6X1.2W WHI 3K CL	12	3.0	96536653
LED floodlight			
D-CO F LED FLOOD2 6X1.2W WHI 3K	12	0.9	96536650

3K - CCT 3000K
FR - frosted glass
CL - clear glass

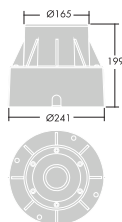


Mini

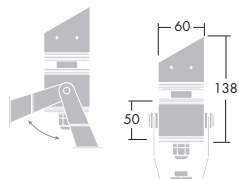
Mini



Medi



Maxi



LED floodlight

*All dimensions in mm

YardLight



A general purpose LED floodlight for area and security lighting
YardLight

- Lumens output: 540lm, 720lm, 2600lm, 4200lm & 9700lm
- 4000K (cool white)
- Useful life L70 40,000 hours
- Operating temperature -20°C to 40°C
- Choice of motion or light sensor on small version for further energy saving

YardLight ARC

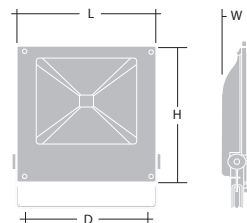
- Lumen output: 1200lm, 2400lm, 4000lm & 9000lm
- 4000K (cool white)
- Useful life L70 50,000 hours
- Operating temperature -20°C to 40°C
- Choice of motion sensor option available for 1200lm & 2400lm

Materials and Finish

- Body: Die-cast aluminium painted black or silver RAL 9006 (ARC)
- Reflector: Anodized aluminium
- Lens: Toughened stippled glass
- Stirrup: Mild steel painted black (YardLight) and grey (YardLight ARC)

Installation and Mounting

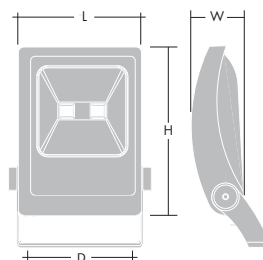
- Product supplied complete with pre-wired 0.5m (3 x 1mm²) black cable
- Suitable for surface mounting applications



Yardlight LED

	Length (L)	Width (W)	Height (H)	Hole Centres (D)
10W (mini)	83	40	112	50
10W (small)	146	53	171	67
36W (medium)	222	80	279	100
55W (large)	290	100	340	120
90W (extra large)	370	115	445	155

*All dimensions in mm



Yardlight ARC LED

	Length (L)	Width (W)	Height (H)	Hole Centres (D)
1200lm	135	59	184	116
1200lm PIR	135	59	184	116
2400lm	210	81	270	172
2400lm PIR	210	81	270	172
4000lm	250	93	390	172
9000lm	310	123	420	185

*All dimensions in mm



Ordering Guide

Description	Lumen Output (lm)	Wt (Kg)	Part No.
YARDLIGHT LED			
YARDLIGHT LED MINI 10W L840	540	0.4	96541930
YARDLIGHT LED S 10W L840	720	1.2	96541931
YARDLIGHT LED S 10W L840 LS	720	1.2	96541933
YARDLIGHT LED S 10W L840 PIR	720	1.2	96541932
YARDLIGHT LED M 36W L840	2600	3.3	96541934
YARDLIGHT LED L 55W L840	4500	5.4	96541935
YARDLIGHT LED XL 90W L840	9700	9.5	96544513

Description	Circuit Power (W)	Wt (Kg)	SAP Code
YARDLIGHT ARC LED			
YARDLIGHT ARC LED1200-840 GRY	15	1.1	96545550
YARDLIGHT ARC LED1200-840 GRY PIR	15	1.1	96545554
YARDLIGHT ARC LED2400-840 GRY	30	2.5	96545551
YARDLIGHT ARC LED2400-840 GRY PIR	30	2.5	96545555
YARDLIGHT ARC LED4000-840 GRY	50	4.2	96545552
YARDLIGHT ARC LED9000-840 GRY	80	9.5	96545553

1200, 2400, 4000, 9000 - lumen category
 L840, 840 - CRI>80, CCT 4000K
 PIR - motion sensor, LS - lighting sensor
 GRY - silver finish

AreaPak

AS/NZS
60598

IP65



A general purpose floodlight supplied with a 70W/150W/250W/400W High Pressure Sodium or Metal Halide lamp

- Robust die-cast aluminium LM6 body and front frame
- Adjustable stirrup for flexibility in mounting
- Easy installation and maintenance with drop down glass and cable entry
- Special ribs designed to improve heat dissipation

Materials and Finish

- Body and front frame: die-cast aluminium LM6, painted black RAL9005
- Reflectors: dimpled anodized aluminium with specular side reflector
- Lens: tempered 4mm flat glass with stainless steel bolts and silicone rubber gasket
- Stirrup: 4mm mild steel, powder coated black, RAL 9005

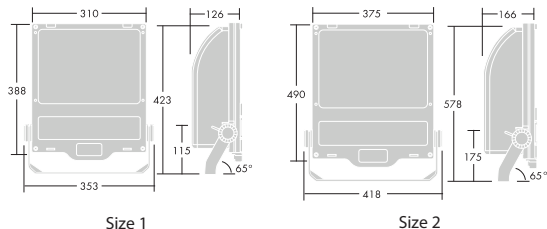
Installation and Mounting

- Single glad cable entry suitable for Ø9-13mm OD cable with 3 pole terminal block for up to 4mm cables
- Areapak 1 has a stirrup fixed by a single bolt through a 16mm diameter hole. Two additional 11mm diameter fixing holes at 102mm centres
- AreaPak 2 has a stirrup fixed through a 21mm diameter hole. Two additional 13mm diameter fixing holes at 250mm centres

Ordering Guide

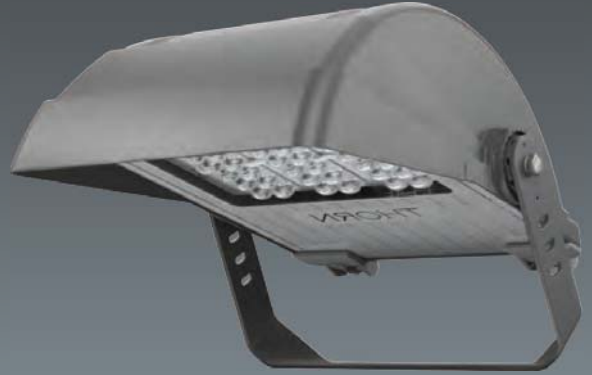
Description	Circuit Power (W)	Wt (Kg)	SAP Code
Size 1			
AREAPAK 1 70W HIT-DE-CE/RX7S L740	70	6.9	96043377
AREAPAK 1 70W HST FTB E27 CWL	70	6.9	96063013
AREAPAK 1 70W HID/E27 L000	70	6.9	96043376
AREAPAK 1 150W HIT-DE-CE/RX7S L740	150	7.1	96043381
AREAPAK 1 150W HID/E40 L000	150	7.1	96043380
Size 1 Accessories			
AREAPAK 1 WG BL	-	-	96043387
AREAPAK 1 LV BL	-	-	96043388
AREAPAK 1 VS BL	-	-	96043389
Size 2			
AREAPAK 2 250W HIT/E40 L640	250	14	96043385
AREAPAK 2 250W HST/E40 L	250	12	96043382
AREAPAK 2 400W HIT/E40 L640	400	12.3	96043386
AREAPAK 2 400W HST FTB E40 CWL	400	11.3	96063014
AREAPAK 2 400W HST/E40 L	400	11.3	96043383
Size 2 Accessories			
AREAPAK 2 WG BL	-	-	96043390
AREAPAK 2 LV BL	-	-	96043391
AREAPAK 2 VS BL	-	-	96043393

L640 - lamp included CRI60 CCT4000K
L740 - lamp included CRI70 CCT4000K



*All dimensions in mm

AreaFlood



An asymmetric inclined flat glass floodlight with built in superior environment optics that limit upward light

- Lumen output 4,200 - 17,400lm
- Beam angles 60°C
- Useful life up to L70 100,000 hours
- The accurate optical system and integrated visor permits effective control of obtrusive light (Ocd at 90°)

Materials and Finish

- Body: die-cast aluminium AS12U, ENAC-47100 (LM6 equivalent) powder coated texturised dark grey
- Gasket: silicon (IP66 seal)
- Hinges: polyamid glass fibre 20%
- Glass: toughened (5mm thick)

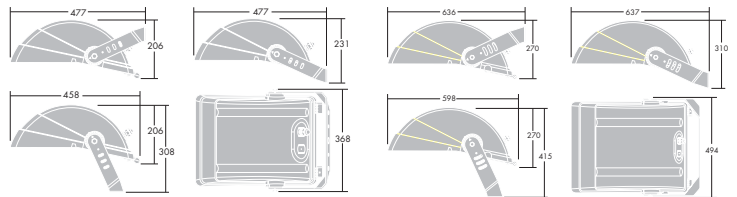
Installation and Mounting

- Reversible mounting stirrup and aiming for horizontal position is simplified via 2 indicators depending on the stirrup mounting position

Ordering Guide

Description	Circuit Power (W)	Wt (Kg)	Part No.
Size 1			
AREA1 36L50 A/CB L740 CL2	58	9.3	96269097
AREA1 36L70 A/CB L740 CL2	84	9.3	96269099
Size 2			
AREA2 60L35 A/CB L740 CL2	67	18.4	96269107
AREA2 60L50 A/CB L740 CL2	98	18.4	96269109
AREA2 60L70 A/CB L740 CL2	134	18.4	96269111
AREA2 84L35 A/CB L740 CL2	92	19.3	96269113
AREA2 84L50 A/CB L740 CL2	131	19.3	96269115
AREA2 84L70 A/CB L740 CL2	189	19.3	96269117
Accessories			
AREA MTP 60MM ANT	-	1.8	96256062
AREA MTP 76MM ANT	-	1.8	96256060
AREA1 MFX DECO 60MM ANT	-	5.2	96256105
AREA1 MFX DECO 76MM ANT	-	5.2	96257925
AREA1 WG ANT	-	1.9	96255339
AREA2 WG ANT	-	2.9	96255353

L740 = lamp included CRI70 CCT4000K
 CL1 - class 1 electric available on request
 BP - bi power technology available on request



Size 1

Size 2

*All dimensions in mm

Olsys



Versatile and sober street lantern employing a state-of-the-art LED engine for performance and efficiency

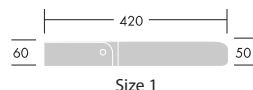
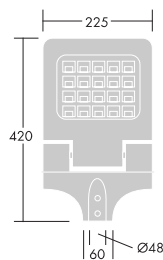
- State-of-the-art LED engine in line with EN13201 and European recommendations (ULOR 0%, above 70Lm/W in 4000K) to cover projects up to ME3
- Complete with power reduction to reduce energy consumption during the night
- Exceptionally low cost of ownership with an optimised heat management system to provide a lifetime up to 80,000 hours (L70, 25°) without dimming
- Discreet design is coordinated with other Olsys luminaires and available with a wide choice of mounting types and column packages

Materials and Finish

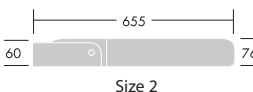
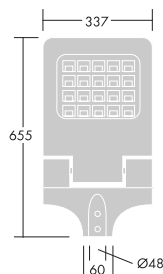
- Body: die-cast aluminium (AS9U) powder coated silver grey 9006 finish
- Enclosure: size 1 clear UV stabilised PC size 2: tempered glass
- Optics: size 1 PC, size 2 micro reflectors in highly reflective anodised aluminium
- Screws: stainless steel Brackets and mounting accessories: aluminium

Installation and Mounting

- Fitting and mounting accessories delivered separately.
- Product supplied pre-wired with connector
- Recommended mounting heights:
 - Olsys Street 1: 4m
 - Olsys Street 2 : 6 to 8m
- Coordinated columns and brackets: cylindro-conical or curved
- Access to gear (replaceable) via 4 screws from the canopy



Size 1



Size 2

*All dimensions in mm



Ordering Guide

Luminaires are ready for surface/wall mounting with exception of Olsys 2 Street.
For pole installation order mounting attachment.

Description	Circuit Power (W)	Wt (Kg)	Part No.
Size 1			
OLSYS1 10L70 730 CL2 BP5 STR	23	2.8	96271061
OLSYS1 10L70 740 CL2 BP5 STR	23	2.8	96271062
OLSYS1 16L70 730 CL2 BP5 STR	37	2.8	96271059
OLSYS1 16L70 740 CL2 BP5 STR	37	2.8	96271060
OLSYS1 10L70 740 CL2 A/S	23	2.8	96262336
OLSYS1 20L70 730 CL2 A/S	45	2.8	96262339
OLSYS1 20L70 740 CL2 A/S	45	2.8	96262338
OLSYS1 20L70 730 CL2 2X6°	45	2.8	96262355
OLSYS1 20L70 740 CL2 2X6°	45	2.8	96262354
Size 1 Accessories			
OLSYS1 BRA 500MM MTP	-	-	96262300
OLSYS1 BRX2 1000MM MTP	-	-	96262301
OLSYS1 MLE 47MA	-	-	96262302
OLSYS1 MLE 60MA	-	-	96262297
OLSYS1 MTP 60/76	-	-	96262298
OLSYS1 MTP 60/76 X2	-	-	96262299
Size 2			
OLSYS2 28L70 730 CL2 BP8 STR	68	8.45	96271054
OLSYS2 28L70 740 CL2 BP8 STR	68	8.45	96271055
OLSYS2 44L70 740 CL2 BP8 STR	102	8.45	96271053
OLSYS2 30L70 740 CL2 A/S	69	8.45	96262344
OLSYS2 40L70 740 CL2 A/S	90	8.45	96262346
Size 2 Accessories			
OLSYS2 BRA 500MM MTP	-	-	96262306
OLSYS2 BRX2 1000MM MTP	-	-	96262307
OLSYS2 MLE 47MA	-	-	96262308
OLSYS2 MLE 60MA	-	-	96262303
OLSYS2 MTP 60/76	-	-	96262304
OLSYS2 MTP 60/76 X2	-	-	96262305
OLSYS2 MWA STR	-	-	96267967

730, 740 - CRI>70, CCT 3000K,4000K
MPT - post top MLE - side entry
BP5, BP8 - bi power 5 or 8 hours
MWA - wall mounting
STR - street, A/S area, 2x6° - illuminations

Jalon

AS/NZS 60598



IP65

IK05



A small and efficient wall recessed luminaire for outdoor and indoor guidance

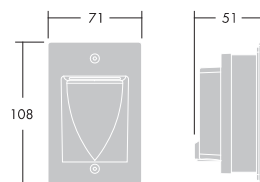
- Suitable for outdoor and indoor pathways and stairs with wide asymmetrical light beams from small dimensions (71x108mm)
- Choice of vertical or horizontal versions and two colour temperatures
- Available complete with integral driver, LED light source and recessed box. The recessed box can also be ordered separately
- Polystyrene protection of the housing opening during installation
- Useful life L70 50,000 hours

Materials and Finish

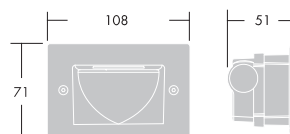
- Body front: die-cast aluminium, painted sanded dark grey (close to RAL 9007)
- Body rear: technopolymer
- Enclosure: polycarbonate
- Recessed box: polyethylene
- External screws: stainless steel AISI304

Installation and Mounting

- Suitable for wall recessed mounting using recessed box.
- Maximum 9mm cable entry through recessed box with supplied grommet.
- Recessed box supplied with protective insert for installation into concrete walls.



Vertical version



Horizontal version

*All dimensions in mm



Ordering Guide

Description	Circuit Power (W)	Wt (Kg)	Part No.
LED			
JALON LED 12L18 840 MWA V	4W	0.3	96271420
JALON LED 12L18 840 MWA H	4W	0.3	96271421
JALON LED 12L18 830 MWA V	4W	0.3	96271422
JALON LED 12L18 830 MWA H	4W	0.3	96271423
Accessory			
JALON LED RBOX V/H	-	-	96271424

830, 840 - CRI>80, CCT 3000K,4000K
 V - vertical version, H - horizontal version

Jewel

AS/NZS
60598

IP44



A basic bulkhead luminaire suitable for general area lighting

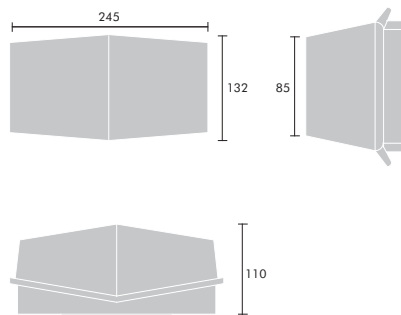
- Suitable for indoor and outdoor applications including security, amenity and hoardings
- Compact size with smooth lines
- Captive lens fixing screws
- ES lampholder model for self ballasted fluorescent lamp

Materials and Finish

- Body: moulded black plastic
- Lampholders: porcelain
- ES Diffuser: durable impact resistant clear polycarbonate

Installation and Mounting

- Suitable for ceiling and wall mounting



*All dimensions in mm



Ordering Guide

Description	Circuit Power (W)	Wt (Kg)	Part No.
Compact fluorescent (827 lamp included)			
JEWEL 1X9W TC-S PR PC BLK	13.1W	1.0	96028444
JEWEL 2X9W TC-S PR PC BLK	21.7W	1.1	96028445
Incandescent (lamp ordered separately)			
JEWEL 1X60W A PR PC BLK ES NL	60W	0.9	96289358

PR PC - prismatic polycarbonate diffuser
 BLK - black body

WallPack

AS/NZS 60598



IP65

IK07



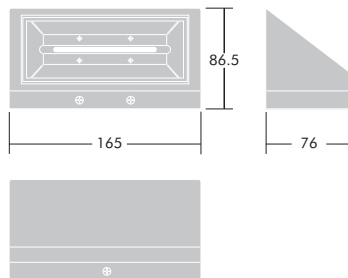
- 6W up to 480lm
- Beam angle 110°
- Useful life L70 50,000 hours
- Color rendering >80
- Color temperature 2700K (warm white) & 7000K (daylight)

Materials and Finish

- Body: mild steel sheet, silver/grey finish (RAL9006)
- Diffuser: UV-stabilized, opal acrylic

Installation and Mounting

- High purity aluminium reflector and thermal radiator
- 3mm high strength tempered glass cover



*All dimensions in mm



Ordering Guide

Description	Circuit Power (W)	Wt (Kg)	Part No.
LED			
WALLPACK LED480-827 GRY	6W	0.5	96545556
WALLPACK LED480-870 GRY	6W	0.5	96545557

480 - lumen category
 827, 870 - CRI>80, CCT 2700K,7000K
 GRY - silver/grey finish

Porto



The eco-friendly bulkhead combines powerful lumen packages up to 850lm at 20W of power

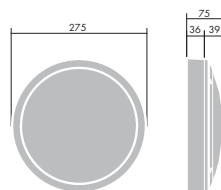
- Cool white (4000K)
- IP54
- Useful life L70 40,000 hours
- Choice of plain or grill cover
- Available with motion sensor option

Materials and Finish

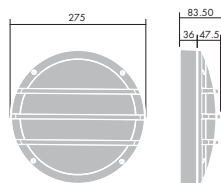
- Body: Die-cast Aluminium painted black
- Reflector: Polyethylene terephthalate (PET) - a thermoplastic polymer material
- Diffuser: Opal polycarbonate

Installation and Mounting

- Supplied with 4 x fixing screws and grommet ready to terminate into 3 x 1mm² terminal block
- Suitable for surface mounting applications (wall or ceiling)



Standard version



Grill version

*All dimensions in mm



Ordering Guide

Description	Circuit Power (W)	Wt (Kg)	Part No.
LED			
PORTO LED 20W HF L840	20W	1.0	96542306
PORTO LED 20W HF MWS L840	20W	1.0	96542307
PORTO LED 20W HF L840 GR	20W	1.0	96542308
PORTO LED 20W HF MWS L840 GR	20W	1.0	96542309

L840 - CRI>80, CCT 4000K
 MWS - microwave sensor
 GR- with grill

Piazza 2



IK08

Small

IK09

Large



Robust, IP65 luminaires designed to provide security, surround or accent illumination with a touch of style

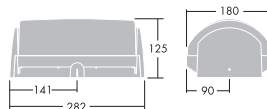
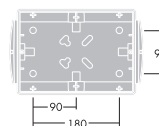
- Excellent light distribution and uniformity (up to 11m spacing)
- Multi-option mounting: wall or brackets for corners and poles
- Supplied complete with lamp

Materials and Finish

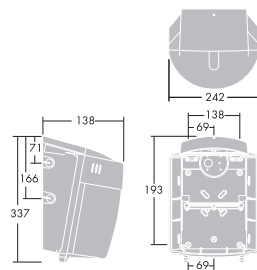
- Body: polycarbonate, anthracite finish
- Diffuser: polycarbonate. Small: smooth opal. Large: clear prismatic, smooth opal
- Eyelid: polycarbonate, anthracite finish
- Pole/wall mounting brackets: galvanised steel, polyester powder coated

Installation and Mounting

- 20mm cable entry via rear grommeted hole or top and side conduit entries
- Internal or external corner installation possible with wall bracket accessory
- Pole mounting brackets allow 1 to 4 large luminaires on one pole between 60mm and 76mm diameter.
- Recommended mounting height:
Large 3-6m;
Small 1-3m



Small version



Large version

*All dimensions in mm



Ordering Guide

Description	Circuit Power (W)	Wt (Kg)	Part No.
Small			
PIAZZA II S 1X18W TC-TEL HF OP FR L840	19	1.1	96233240
PIAZZA II S 1X18W TC-TEL HF OP PR L840	19	1.1	96233278
PIAZZA II S 1X26W TC-TEL HF OP FR L840	27	1.2	96233242
PIAZZA II S 1X35W HIT-CE G12 HF OP FR LI	43	1.4	96233244
PIAZZA II S 2X18W TC-DEL HF OP FR L840	38	1.3	96233276
PIAZZA II S 2X18W TC-DEL HF OP PR L840	38	1.3	96233282
PIAZZA II S 2X26W TC-DEL HF OP PR L840	51	1.3	96233283
Large			
PIAZZA II L 1X42W TC-T HF PR RAL L840	46	2.1	96233272
PIAZZA II L 1X42W TC-TEL HF OP RAL L840	46	2.1	96233273
PIAZZA II L 70W 240V HIT-CE E27 PR RAL L	85	3.6	96233235
PIAZZA II L 70W 240V HSE-I PR RAL LI	85	3.5	96233234
PIAZZA II L 70W 240V HST P PR RAL LI	85	3.6	96233233
PIAZZA II L 70W HST DGE P PR RAL LI	78	2.5	96233261
Accessories			
PIAZZA II L BRACKET EXT MWA	-	0.35	96233286
PIAZZA II L BRACKET INT MWA MA76	-	0.30	96233246
PIAZZA II L BRACKET X4 MWA MA76	-	0.31	96233731
PIAZZA II L MA76 2XTORQUE CLIP	-	0.28	96233730

L840 - CRI>80, CCT 4000K

S - small, L - large

PR - prismatic, OP - opal

Chartor



A range of bollards for low level pedestrian and area lighting

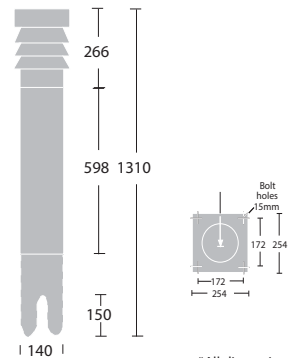
- Choice of fresnel lens and/or mirror or louvre internal optic with clear lens
- Louvred internal optic for shielded lighting with a distinct cut off downward light
- Mirror internal optic for glare free quality output
- Recessed tamper-resistant bolt

Materials and Finish

- Head: die-cast aluminium, colours available to special order
- Lenses: clear polycarbonate
- Internal optics: die-cast aluminium
- Post: galvanised aluminium, painted powder coat black, other colours available to special order

Installation and Mounting

- Base plate or buried mounting, latter option embeds 450mm into the ground
- 254mm base plate version fixes via four Ø15mm holes at 172mm centres. Ø60mm central hole for wiring
- Three way terminal block for 2 x 4mm² cable



*All dimensions in mm



Ordering Guide

Description	Wt (Kg)	Part No. Black finish	Part No. Unpainted
Head with resnel Lens			
CHARTOR E27	2.0	96063122	96063107
CHARTOR 1X26W TC-T LI830	2.9	96038284	96015173
CHARTOR 1X50W HID	3.1	96015176	96015174
CHARTOR DOMED 1X50W HID	3.1	96035259	-
Head with internal louvre			
CHARTOR 1X26W TC-T LI830	2.9	96015197	96015196
CHARTOR 1X50W HID	3.1	96015219	96015217
Head with internal mirror louvre			
CHARTOR 1X26W TC-T LI830	2.9	96015240	96015239
CHARTOR 1X50W HID	3.1	96015236	96015235
CHARTOR DOMED 1X50W HID	3.1	96038285	-
Post			
CHARTOR POST MPL	8.3	96018939	96031973
CHARTOR POST MGR	10.3	96018951	96031975

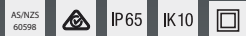
MPL - Base Plate

MGR - Buried

LI830 - 3000K lamp included

HID - E27 lamp to be ordered separately

D-CO LED Bollard



A contemporary slim bollard offering comfortable visual guidance

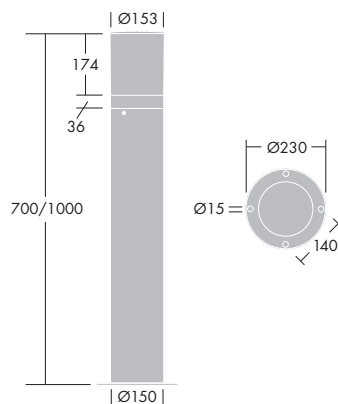
- Comfortable white light with no glare provided by a semi-opal anti-UV PC diffuser
- Suitable for any application thanks to high specs and two heights
- 60 000 hour lifetime (L80, 25°) ensures low maintenance costs
- Flange mounting, compatible with root spikes

Materials and Finish

- Top and body: aluminium, powder coated grey 900
- Diffuser: semi-opal anti-UV polycarbonate

Installation and Mounting

- Suitable for flange mounting
- Suitable for base plate mounting
- Spike accessory is required for buried installations



*All dimensions in mm



Ordering Guide

Description	Circuit Power (W)	Wt (Kg)	Part No.
LED			
D-CO LED BOLLARD 1000 30L50 830 CL2 CON	14	5.5	96262098
D-CO LED BOLLARD 1000 30L50 840 CL2 CON	14	5.5	96262143
Accessories			
MGR SPIKE PROM/AVENUE/MADISON/DCO	-	10	96005367

830, 840 - CRI>80, CCT 3000K,4000K

Flexity

AS/NZS
60598

IP66

IK09



Discreet and versatile LED lantern with a fast return on investment for city space lighting

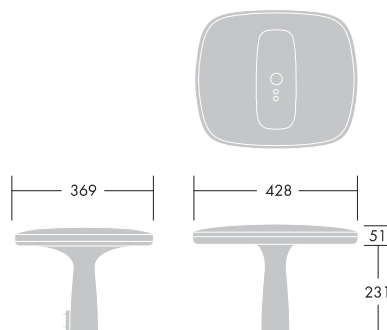
- Modern, discreet and versatile post top LED lantern which is easy to integrate into the cityscape and residential areas
- 100 000 hour maintenance free lifetime for fast return on investment and low total cost of ownership (L80 100,000 hours)
- LED light source, dedicated optics and integrated Bi-power dimming for energy savings.
- Two enclosures: clear for optimised performance and diffuse for optimised comfort

Materials and Finish

- Canopy and base: die cast aluminium (EN AC-46100), powder coated dark grey (close to RAL 7043) finish
- Flat enclosures: clear glass and UV stabilised polycarbonate diffuser

Installation and Mounting

- Recommended mounting height: 3 to 6m
- Distribution: clear glass: symmetric or asymmetric (street optic) and diffuser: radial symmetric
- Post top mounting on spigot/columns Ø60mm or Ø76mm. Internal height of base 75mm
- 5m pre-wired version available



*All dimensions in mm



Ordering Guide

Description	Circuit Power (W)	Wt (Kg)	Part No.
Opal confort			
FLEXITY 24L25 R/SC CL2 W5M D60 L730	20W	4.5	96270771
FLEXITY 24L25 R/SC CL2 W5M D60 L740	20W	4.5	96270772
FLEXITY 24L25 R/SC CL2 W5M D76 L730	20W	4.7	96270779
FLEXITY 24L25 R/SC CL2 W5M D76 L740	20W	4.7	96270780
Clear asymmetric			
FLEXITY 24L25 STR CL2 W5M D60 L730	20W	4.5	96271221
FLEXITY 24L25 STR CL2 W5M D60 L740	20W	4.5	96271222
FLEXITY 24L25 STR CL2 W5M D76 L730	20W	4.7	96271225
FLEXITY 24L25 STR CL2 W5M D76 L740	20W	4.7	96271226
FLEXITY 24L50 STR CL2 W5M D60 L730	40W	4.5	96270787
FLEXITY 24L50 STR CL2 W5M D60 L740	40W	4.5	96270788
FLEXITY 24L50 STR CL2 W5M D76 L730	40W	4.7	96270791
FLEXITY 24L50 STR CL2 W5M D76 L740	40W	4.7	96270792
FLEXITY 24L50 STR BP8 CL2 W5M D60 L730	40W	4.5	96270811
FLEXITY 24L50 STR BP8 CL2 W5M D60 L740	40W	4.5	96270812
FLEXITY 24L50 STR BP8 CL2 W5M D76 L730	40W	4.7	96270815
FLEXITY 24L50 STR BP8 CL2 W5M D76 L740	40W	4.7	96270816
Clear symmetric			
FLEXITY 24L25 SYM CL2 W5M D60 L730	20W	4.5	96271205
FLEXITY 24L25 SYM CL2 W5M D60 L740	20W	4.5	96271206
FLEXITY 24L25 SYM CL2 W5M D76 L730	20W	4.7	96271209
FLEXITY 24L25 SYM CL2 W5M D76 L740	20W	4.7	96271210
FLEXITY 24L50 SYM CL2 W5M D60 L730	40W	4.5	96270773
FLEXITY 24L50 SYM CL2 W5M D60 L740	40W	4.5	96270774
FLEXITY 24L50 SYM CL2 W5M D76 L730	40W	4.7	96270781
FLEXITY 24L50 SYM CL2 W5M D76 L740	40W	4.7	96270782
FLEXITY 24L50 SYM BP8 CL2 W5M D60 L730	40W	4.5	96270797
FLEXITY 24L50 SYM BP8 CL2 W5M D60 L740	40W	4.5	96270798
FLEXITY 24L50 SYM BP8 CL2 W5M D76 L730	40W	4.7	96270805
FLEXITY 24L50 SYM BP8 CL2 W5M D76 L740	40W	4.7	96270806

24L25 - 24 LEDs driven at 250mA (2000lm)

24L50 - 24 LEDs driven at 500mA (3500lm)

L730, L740 - CRI>70, CCT 3000K, 4000K

BP - bi power

CL2 - class II electrical, CL1 - class I electrical available on request

81W>6000lm version available on request

Isaro



Economic, accurately controlled LED lighting for minor roads and urban installations

Isaro LED

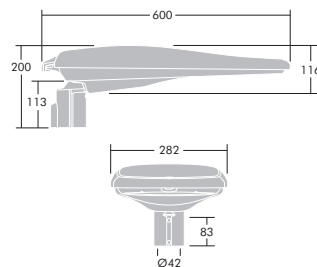
- Excellent heat dissipation and a long life time for low maintenance and a minimum total cost of ownership
- High optical performance lighting with R-PEC optic and an adjustable tilting -20° to $+10^{\circ}$ for accurate lighting control
- Option of polycarbonate bowl or flat glass enclosure
- Useful life L90 100,000 hours
- Timeless dimple style offers an excellent refurbishment solution and reduces daytime visual impact
- Integrated 4kv surge protection

Isaro HID

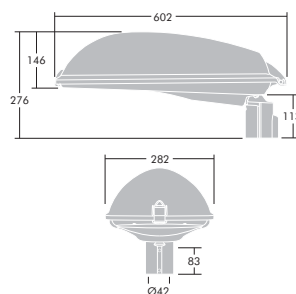
- High optical performance with adjustable tilting -20° to $+10^{\circ}$ for accurate lighting control
- Self-cleaning bowl option to reduce cleaning maintenance cycles
- Durable and recyclable full aluminium construction, protected to IP66
- Design for easy installation and maintenance with access to the lamp and gear tray from above and secure by an automatic disconnection
- Two piece louvre kit available to special order

Materials and Finish

- Body: die-cast aluminium (equivalent to LM24) powder coated grey, RAL 9006
- Bracket: die-cast aluminium powder coated grey, RAL9006
- Enclosures: UV stabilised polycarbonate or toughened glass
- Screws and clip: stainless steel
- Reflector: aluminium anodised



LED version



HID version

*All dimensions in mm



Ordering Guide

Description	Circuit Power (W)	Wt (Kg)	Part No.
LED - Flat glass			
24L35 EFL 31W 740 CL2	28	5.4	96268970
24L70 EFL 58W 740 CL2	54	5.4	96267794
36L70 EFL 84W 740 CL2	79	5.4	96267799
LED - Flat glass with nema socket			
24L35 EFL 31W 740 CL1 PN	28	5.6	96267791
24L70 EFL 58W 740 CL1 PN	54	5.6	96267795
36L70 EFL 84W 740 CL1 PN	79	5.6	96267800
LED - PC bowl			
24L35 PC 31W 740 CL2	28	5.2	96267792
24L70 PC 58W 740 CL2	54	5.2	96267796
36L70 PC 84W 740 CL2	79	5.2	96267801
LED - PC bowl with nema socket			
24L35 PC 31W 740 CL1 PN	28	5.4	96267793
24L70 PC 58W 740 CL1 PN	54	5.4	96267798
36L70 PC 84W 740 CL1 PN	79	5.4	96267802
HID - Electronic			
70W HIDE CL2 E27, Flat Glass	28	5.3	96267793
70W HIDE CL2 E27, Shallow PC	54	5.3	96267798
150W HIDE CL2 E40, Flat Glass	79	5.3	96267802
150W HIDE CL2 E40, Shallow PC	44.4	6.1	96241594
HID - Electronic, mini photocell			
70W HIDE CL1 PN E27, Flat Glass	81	5	96265721
70W HIDE CL1 PN E27, Shallow PC	81	5	96265725
150W HIDE CL1 PN E40, Flat Glass	161	5.3	96265723
150W HIDE CL1 PN E40, Shallow PC	161	5.3	96265727
Accessories			
ISARO MA60	-	-	59004982

24L35 - 24 LEDs driven at 350mA (3000lm)
 24L70 - 24 LEDs driven at 700mA (5500lm)
 36L70 - 36 LEDs driven at 700mA (8000lm)
 EFL - Flat glass enclosure, PC - Shallow PC enclosure
 CL1 - Class I electrical, CL2 - Class II electrical
 740 - CRI>70, CCT 4000K

Urba

AS/NZS
60598

IP66

IK09



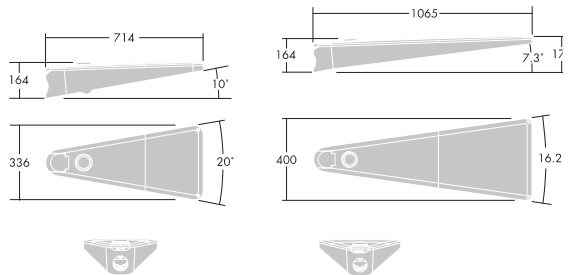
For sophistication and comfort in urban life

- From 12 LED to 84 LED
- Lifetime: 100 000 hours @B10L70
83 000 hours @B10L80
- Efficacy up to 100 Llm/W, up to 7,000 Llm (small) & up to 15,000 Llm (large)
- Colour temperature 4000K

Materials and Finish

Luminaire:

- Body: die cast aluminium dark grey (close to RAL 7043)
 - Glass: tempered flat glass or dichroic flat glass (5mm). Prismatic glass on request
 - Frame: aluminium - powder polycarbonate, metallised aluminium and varnish
 - Deflector: ABS anti-UV white (RAL 9016)
- Brackets with coordinated columns:
- Painted galvanised steel, dark grey finish.
 - Two diameter conical columns dedicated to Urba post top lantern
 - Painted aluminium, dark grey finish



*All dimensions in mm

Installation and Mounting

Luminaire:

- Supplied complete and ready to install in a single box
- Pre-wired post-top versions with 8m (small version) or 10m (large version)
- Recommended heights:
 - Small - 4 to 6m
 - Large - 6 to 8m
- Columns delivered with anchoring bolts
- Aluminium columns diameters:
 - Small - internal 60mm external 81mm
 - Large - internal 76mm, external 96mm
- Flange mountings: 200x200mm
- Galvanised steel columns with flange mountings: 300x300mm



Ordering Guide

Description	Circuit Power (W)	Wt (Kg)	MLE	8M MTP60
Small				
URBA S 24L35 IVS GY CL2 L740	28	10.5	96269589	96269599
URBA S 24L50 IVS GY CL2 L740	39	10.5	96269592	96269602
URBA S 24L70 IVS GY CL2 L740	54	10.5	96269595	96269605
URBA S 36L35 IVS GY CL2 L740	40	10.5	96269590	96269600
URBA S 36L50 IVS GY CL2 L740	56	10.5	96269593	96269603
URBA S 36L70 IVS GY CL2 L740	79	10.5	96269596	96269606
Large				
URBA L 48L70 IVS GY CL2 L740	108	16	96269919	96269928
URBA L 60L70 IVS GY CL2 L740	133	16	96270043	96270044
URBA L 72L35 IVS GY CL2 L740	78	16	96269914	96269923
URBA L 72L50 IVS GY CL2 L740	112	16	96269917	96269926
URBA L 72L70 IVS GY CL2 L740	161	16	96269920	96269929
URBA L 84L35 IVS GY CL2 L740	90	16	96269915	96269924
URBA L 84L50 IVS GY CL2 L740	129	16	96269918	96269927
URBA L 84L70 IVS GY CL2 L740	183	16	96269921	96269930
Accessories				
URBA 1XBRA 0,8 MTP TOP76 D60 GY	-	-	-	96270892
URBA 2XBRA 0,45 MTP TOP76 D60 GY	-	-	-	96270894
URBA 2XBRA 0,8 MTP TOP76 D60 GY	-	-	-	96270895
URBA MWA 0,8 GY	-	-	-	96270896
URBA MWA 0,45 GY	-	-	-	96270897
URBA BRA MID POLE 0,45 GY	-	-	-	96271096

L740 - CRI>70 CCT4000k

MLE - lateral, MTP - pole top

MWA - wall bracket

CL1 available on request

HID - lamp to be ordered separately

Champion

AS/NZS
60598

IP66

IK08



A high performance discharge floodlight with a best-in-class optic for control of obtrusive light.

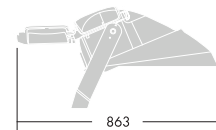
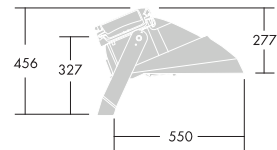
- Compact asymmetric floodlight for 1 and 2 kW metal halide lamps, incorporating the flat glass concept and integrated visor for total control of glare and obtrusive light (0 cd at 90°), with additional accessories also available
- Maximum optical efficiency and accurate light distribution with minimum light spill
- Three lamp positions, adjustable on site, from just one installed position
- Tool-free aiming in azimuth thanks to integrated aiming sights

Materials and Finish

- Body: die-cast aluminium (EN AC-47100, LM2 Equivalent), unpainted
- Glass: 4mm toughened
- Wiring / ignitor box: polyamide (66 V0 Black: 20% glass fibre re-inforced)
- Screws: stainless steel

Installation and Mounting

- Rear access to lamp with automatic power disconnection on opening of rear access door
- Tool-free installation and lamp replacement
- Stirrup fixed by M20 bolt through Ø22mm hole, or through Ø15mm holes
- Ballast and capacitors to be mounted separately
- Cable gland for Ø7.5-13mm cable
- Aiming via top (door and visor) or side (ignitor box) integrated aiming sights
- Windage = 0.19 m² max



*All dimensions in mm



Ordering Guide

Lamps to be ordered separately.

For complete fitting please order floodlight and control gear.

Description	Circuit Power (W)	Wt (Kg)	Part No.
1KW			
CHAMPION 1KW E40 HPIT CL2 WI	1051	19.0	96261224
CHAMPION 1KW E40 HST CL2 WI	1051	19.1	96261225
CHAMPION 1KW HQITSS CL2 WI	1051	19.2	96261223
CHAMPION 1KW MHN-LA CL2 WI	1051	19.3	96261227
2KW			
CHAMPION 2KW HQITSL CL2 WI	2075	18.9	96261232
CHAMPION 2KW HQITSS -MHN SB CL2 WI	2075	19.2	96261229
CHAMPION 2KW MHN-LA CL2 WI	2075	19.3	96261230
CHAMPION 1KW MHN-LA CL2 WI	1051	19.3	96261227
Accessories			
CHAMPION NM AIMING DEVICE	-	-	96262065
CHAMPION NM AJ VS FRONT	-	-	96261970
CHAMPION NM VS REAR	-	-	96261971
CHAMPION NM WG	-	-	96261969
Gear Trays			
CG TM 1KW HPIT 240V NI FUSED	-	-	96540592
CG TM 1KW HPIT 415V NI FUSED	-	-	96540593
CG TM 1KW HPST/HQ/MHNLA 240V NI FUSED	-	-	96038288
CG TM 1KW HPST/HQ/MHNLA 415V NI FUSED	-	-	96038289
CG TM 2KW HQ/MBIL 415V NI FUSED	-	-	96038305
CG TM 2KW MHNLA 415V NI FUSED	-	-	96038307
CG WP 1KW HPIT 240V NI FUSED	-	-	96540594
CG WP 1KW HPIT 415V NI FUSED	-	-	96540595
CG WP 1KW HPST/HQ/MHNLA 240V NI FUSED	-	-	96038290
CG WP 1KW HPST/HQ/MHNLA 415V NI FUSED	-	-	96038291
CG WP 2KW HQ/MBIL 415V NI FUSED	-	-	96038306
CG WP 2KW MHNLA 415V NI FUSED	-	-	96038308

WI - with ignitor, NI - no ignitor
CL2 - class II electrical

Voyager



Voyager LED Disk - Stand alone emergency light

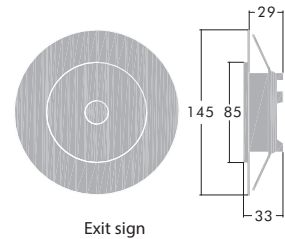
- Emergency Duration: 2 Hour
- LED: 3W output with less than 1W consumption
- Battery: Limited maintenance battery
- Recharge Period: 16 Hours
- Charging Monitor: LED
- Two Cut-Out dimensions 70mm or 110mm
- Available with DALI for central monitoring
- Spacing Table: D40 classification
- Complete with flex and plug

Voyager LED Exit Sign

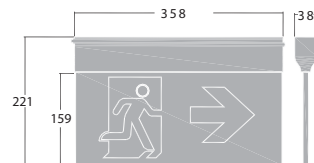
- Emergency Duration: 2 Hour
- LED: 2W output with less than 2W consumption
- Battery: Limited maintenance battery
- Recharge Period: 16 Hours
- White finishing
- Charging Monitor: LED
- Installation: Ceiling, Wall
- Label indication: All versions included
- Available with DALI for central monitoring
- Viewing distance dimensions: 24M

Materials and Finish

- Disk: polycarbonate white cover with diecast aluminium body
- Exit: powder coated finish in white



Exit sign



Disk

*All dimensions in mm

Ordering Guide

Description	Circuit Power (W)	Wt (Kg)	Part No.
LED Disk			
VOYAGER A LED DISK 3W EL2*	3	0.9	96066756
VOYAGER A LED DISK 3W EL2X*	3	0.9	96066761
VOYAGER A LED DISK 3W EL2 ENCLOSED IP55*	3	0.9	96539590
LED Exit			
VOYAGER A LED BLD EXIT 2W EL2 WH* **	2	1.6	96066757
VOYAGER A LED BLD EXIT 2W EL2X WH* **	2	1.6	96066762
VOYAGER A LED PICTOGRAM SET	2	0.1	96537031
VOYAGER A LED BLADE & PICTOGRAM SET	2	1.7	96538789

EL2 - 2 hour emergency D40 LED

EL2X - 2 hour emergency D40 LED DALI

WH - white finish

** Supplied with one set of pictogram

* Refer P.90 for emergency spacing table

Lighting Control



Sensa SDP Wall Mounted Control Panel

A single channel DALI/DSI controller for single room installations
Control up to 20 DALI or DSI luminaires in 1 group

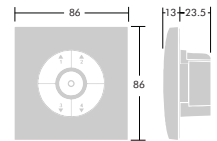
The product has the following controls:

- Scene buttons - four buttons that offer 4 lighting levels
 - 1 - 100% brightness
 - 2 - 75% brightness
 - 3 - 50% brightness
 - 4 - 25% brightness
- Raise and lower function
 - Use either buttons 1 or 2 to raise the light level
 - Use either buttons 3 or 4 to lower the light level
- Centre on/off button
- Toggle between lights off and last selected scene

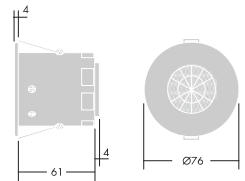
Note: the data sent from the DALI output is in broadcast mode and is not suitable for addressed systems.

Sensa SwitchLite Ceiling Mount

- PIR presence detector provides energy saving (on/off switching) in response to room occupancy and daylight levels
- Controlling standard luminaires containing wound gear or high frequency fixed or DALI
- Suitable for indoor use only
- Simple wiring
- Easy to commission



SDP



SwitchLite

Ordering Guide

*All dimensions in mm

Description	Circuit Power (W)	Wt (Kg)	Part No.
Wall Mounted			
SENSA SDP WALL MOUNTED SINGLE CHANNEL DALI/DSI CONTROLLER	-	-	96241223
SENSA BPS SBOXM MOUNTING BOX (concrete wall installation)	-	-	96233751
SENSA BPS SBOXP MOUNTING BOX (plaster wall installation)	-	-	96233753
Ceiling Mounted			
SWITCHLITE MRE SLD RECESSED PIR PRESENCE DETECTOR (on/off occupancy and daylight control)	-	-	96218677
SENSA MRE DDP RECESSED PIR PRESENCE/ ABSENCE DETECTOR (DALI control and lux setting)	-	-	96601979
SWITCHLITE MRE SLDD PC PHOTOCCELL (switch on/off control only)	-	-	96239828
SWITCHLITE / SENSa KIT MSF SURFACE MOUNTING KIT	-	-	96218678
SWITCHLITE CC HANDHELD SET-UP PROGRAMMER			96240295

Safety and Quality

Thorn Lighting is committed to providing its customers with products and services that are of the highest quality. All Thorn Lighting products are designed and manufactured to ensure safety, reliability and performance.



Our expertise in meeting these goals is recognised internationally. Thorn Lighting is an active participant in developing International product (IEC), European (EN) and lighting (CIE, ISO) Standards. These are used throughout the Lighting Industry and upon these third party endorsements, such as BSI approvals/registrations and lighting scheme designs are widely based.

In Australia we are committed to the harmonisation and expanded use of IEC standards as the basis for joint Australian/ New Zealand standards.

Quality Assurance (AS/NZS ISO 9001)

All activities associated with providing a quality product - design, development, testing, production, despatch, customer service - are covered by each Thorn operation achieving compliance to an internationally recognised Quality System, ie AS/NZS ISO 9001, BSEN ISO 9000, EN ISO 9000 or ISO 9000.

All Thorn products from European design and production sites (in Austria, France, Germany, Sweden and UK) are manufactured to the highest standard. Each site is registered and operated under the quality management system EN ISO 9001 standard.

Thorn Lighting Australia complies with AS/NZS ISO 9001-2008 and has SAI Global Certificate number QEC2204.

Third Party Product Approvals

Third party approval requires independent endorsement that product design is in accordance with published standards, and that controls to maintain quality in manufacture are applied.

Thorn Lighting holds many third party approvals, such as the BSI Kitemark for luminaires and components. Many of our products carry other European Test House approvals. NATA test reports are internationally recognised and are considered as independent - third party test certification.

Thorn UK, under the BSI "Supervised Manufacturer's Testing Laboratory" system contract number BSI 001, carries out compliance testing to BSEN ISO/IEC 17025 - "Operation of testing

laboratories". Furthermore Thorn UK photometric laboratory is a listed registered member of the BSI Registered Photometric Laboratory Scheme (No 003) and this ensures high quality of photometry measurement and production of data for all products.

Thorn Lighting selects and uses independent and/or in-house test facilities to provide the necessary level of compliance coverage for all aspects of lighting product performance and safety.

European made products

For European made luminaires and lighting components, European harmonisation of national approval marks has been achieved through introduction of the ENEC mark.

The ENEC mark can be awarded by any of the recognised European approval authorities, such as BSI, VDE, SEMKO, in the same way as a national approval mark. ENEC is important because it indicates that the product is suitable for use throughout Europe and that all of the most onerous special national conditions of test standards have been complied with.

In the case of lighting components such as ballasts, transformers, emergency lighting units etc. the ENEC mark indicates that both safety and performance standards have been complied with.

Thorn Lighting supported the introduction of the ENEC mark as a major advance in product certification and was the first UK Company to secure approvals under this demanding scheme.

The CE mark signifies that a product conforms to the requirements of relevant EEC directives. The prime purpose of the mark is to assist customs and market inspectors in facilitating the free trading and movement of products within the EEC. At this time the directives appropriate to general lighting products are the Low Voltage Directive (LVD), the Electromagnetic Compatibility (EMC) Directive and the Energy Efficiency (Ballasts for Fluorescent Lighting)

Directive. CE marking is compulsory declaration of conformity to indicate that the products meet all relevant directives and requirements, eg. LVD, EMC and Ballast Efficiency.

The ENEC and CE mark has no legal standing within Australia other than as "an assurance of safety". Thorn Lighting's comprehensive compliance with all relevant standards, and implementation of systems to meet them, means its products comply with these European directives and the standards on which they are based.

Assurance of Safety

Australia, under each states jurisdiction has various "Electrical Safety Acts" and Australian Standard AS/NZS 3280

"Essential safety requirements for low voltage equipment" essentially makes it unlawful to make, hold, or offer for sale any electrical appliance that is unsafe.

Working to Prevent Light Pollution

Glare; the uncomfortable brightness of a light source and light trespass, the spilling of light beyond the boundary of a property, are other forms which can also cause physiological and ecological problems.

Thorn Lighting is committed to the application of better quality lighting. Properly designed luminaires and lighting schemes can substantially improve the quality of life.

Thorn uses efficient light sources and computer-optimised optics in its products in order to maximise the light output and enable precise control of the direction of the light. Thorn Lighting will continue to contribute to all learned bodies, ie. IES, The Lighting Society, CIE, working in favour of better lighting and to advise all its clients of the contribution that reducing glare and spill light makes towards better quality lighting and improving the lit environment.

Thorn Lighting is proudly committed to the development of quality Luminaires that conform to the most stringent requirements of reliability, efficiency safety and performance.

Ambient Temperature (Ta)

Is the term used to denote the surrounding air temperature of the luminaire. In most industrial applications the ambient temperature can range from -20 to 50 degrees, ambient temperature affects luminaire operation and component life, it is highly recommended that a regular maintenance program is in place to ensure reliable operation. No Ta mark indicates that the luminaire is suitable for use in max 25°C ambients. Luminaire Maintenance

Poor installation techniques, exposure to excessive heat, sunlight, and power supply extremes will all lead to accelerated aging and premature failure of a luminaire.

To ensure your lighting product operates efficiently & reliably the product must be installed in accordance with relevant standards, good practices and any specific instructions.

Periodic lamp replacement in accordance with manufacturer life projections will minimise maintenance costs and maximize efficiency. A maintenance program that includes regular cleaning, inspection & functionality testing of the primary components will ensure years of trouble free service.

A maintenance program is required where Metal Halide lamps are used as these lamps, on rare occasions, may fail in a violent manner. In applications where these lamps are operating continuously, the lamps should always be turned off of a period of at least once a week as a precaution to reduce the possibility of violent failures.

Emergency Lighting

Emergency lighting is provided when the supply to the mains lighting fails. It helps people avoid panic, restores their confidence and guides them quickly and safely out of the building. Thorn Lighting offers a wide range of emergency lighting luminaires. These may be integrated standard luminaires or separate dedicated emergency units.

The requirements and operation of emergency lighting is governed by legislation, the Building code of Australia and Australian Standard AS/NZS2293. Operational performance to the standard is achieved by the thermal and photometric test to Appendix C & D. All "standard emergency products"

Ingress Protection

The ingress protection (IP) code denotes the protection against dust, solid objects and moisture provided by the luminaire enclosure. If no code is marked the luminaire is deemed to be IP20.

Ingress Protection (IP) code

(i) First digit of code denotes protection against dust and solid objects

IP2X.	No entry of standard test finger to live parts
IP3X.	No entry of >2.5mm Ø probe to live parts
IP4X.	No entry of >1mm Ø probe to live parts
IP5X.	Dust proof. (No dust deposit around live parts)
IP6X.	Dust tight (no dust entry)
(ii) Second digit of code denotes protect against moisture	
IPX0.	No special protection
IPX1.	Protection against drops of condensed water
IPX2.	Drip-proof (vertical falling drops of liquid)
IPX3.	Rain-proof (rain up to angles of 60°)
IPX4.	Splash proof (spray from any angle)
IPX5.	Water jet

IPX6. Strong water jet

IPx7. Temporary immersion up to 1m

IPX8. Long-term immersion to declared depth

Impact Resistance

The use of Joules (Newton metres- Nm) has been common for many years. More recently an IK rating normally used for electrical enclosures and cabinets (EN 50102:1995) has emerged as manufacturers apply it to their luminaires. The chart below compares both ratings.

Impact Resistance Rating Comparison

IK rating	Joules of Energy
IK01	0.15j
IK02	0.23j
IK03	0.35j
IK04	0.5j
IK05	0.7j
IK06	1j
IK07	2j
IK08	5j
IK09	10j
IK10	20j

Safety Classifications

Class I

Luminaires in this class are electrically insulated and provided with a connection to earth. Exposed metal parts that could become live in the event of basic insulation failure are protected by earthing.

Class II

These luminaires are designed and constructed so that protection against electric shock does not rely on basic insulation only. This can be achieved by means of reinforced or double insulation. No provision for earthing is provided.

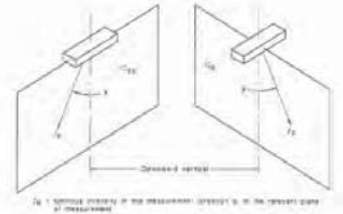
Safety and Quality

Standards - Australian, British, European and International

Description	Australian. AS or AS/NZS	British. BS or BSEN	Harmonised European. EN	International IEC CIE ISO	Comments
Luminaires - General requirements (includes IP tests)	AS/NZS 60598-1	BS 4533: 102.1	EN 60598 1	IEC 60598-1	SAFETY COMPLIANCE BY SELF-CERTIFICATION BASED ON SUPPLIER CONFORMANCE, IN-HOUSE TEST OR NATA REPORT TO SPECIFIC PART 2.
Luminaires - General types	AS/NZS 60598 2-1	BS 4533: 102.1	EN 60598 2-1	IEC 60598 2-1	SAFETY COMPLIANCE BY SELF-CERTIFICATION BASED ON SUPPLIER CONFORMANCE OR REPORT, IN-HOUSE TEST OR NATA REPORT.
Luminaires - Recessed	AS/NZS 60598 2-2	BS 4533: 102.2	EN 60598 2-2	IEC 60598 2-2	SAFETY COMPLIANCE BY SELF-CERTIFICATION BASED ON SUPPLIER CONFORMANCE OR REPORT, IN-HOUSE TEST OR NATA REPORT.
Luminaires - Street lighting	AS1158.6 INCLUDES IEC 60598 2-3 SAFETY REQUIREMENTS.	BS 4533: 102.3	EN 60598 2-3	IEC 60598 2-3	SAFETY COMPLIANCE BY SELF-CERTIFICATION BASED ON SUPPLIER CONFORMANCE OR REPORT, IN-HOUSE TEST OR NATA REPORT.
Portable Luminaires	AS3128 OR AS/NZS 60598 2-4	BS 4533: 102.4	EN 60598 2-4	IEC 60598 2-4	CERTIFICATE OF APPROVAL.
Luminaires - Floodlights	AS/NZS 60598 2-5	BS 4533: 102.5	EN 60598 2-5	IEC 60598 2-5	SAFETY COMPLIANCE BY SELF-CERTIFICATION BASED ON SUPPLIER CONFORMANCE OR REPORT, IN-HOUSE TEST OR NATA REPORT.
Luminaires - with transformers	AS/NZS 60598 2-6	BS 4533: 102.6	EN 60598 2-6	IEC 60598 2-6	SAFETY COMPLIANCE VERIFIED BY SELF- CERTIFICATION BASED ON IN-HOUSE OR NATA REPORT.
Luminaires - Air Handling	AS/NZS 60598 2-19	BS 4533: 102.19	EN 60598 2-19	IEC 60598 2-19	SAFETY COMPLIANCE BY SELF-CERTIFICATION BASED ON SUPPLIER CONFORMANCE OR REPORT, IN-HOUSE TEST OR NATA REPORT.
Luminaires - Emergency	AS/NZS 2293. CURRENTLY UNDER REVIEW TO ADOPT SAFETY ASPECTS OF IEC 60598 2-22	BS 4533: 102.22 BS 5266	EN 60598 2-22 EN 1838	IEC 60598 2-22	SAFETY COMPLIANCE BY SELF-CERTIFICATION BASED ON SUPPLIER CONFORMANCE OR REPORT, IN-HOUSE TEST OR NATA REPORT. PERFORMANCE BY IN-HOUSE, INDEPENDENT TEST OR NATA REPORT.
MEPS Ballasts	AS/NZS 4783 PART 1 & 2.	BS EN	EN.	NONE.	COMPLIANCE BY SUPPLIER OR SELF- CERTIFICATION BASED ON SUPPLIER VERIFICATION AND /OR IN-HOUSE TESTS.
MEPS Lamps	AS/NZS 4782 PART 1 & 2.	BS EN	EN.	NONE.	COMPLIANCE BY SUPPLIER OR SELF- CERTIFICATION BASED ON SUPPLIER VERIFICATION AND /OR IN-HOUSE TEST
Safety Electronic transformers for lamps	AS/NZS 61047	BSEN 61047	EN 61047	IEC 61047	CERTIFICATE OF APPROVAL.
EMC - Emissions Lighting	AS/NZS CISPR 15	BSEN 55015	EN 55015	CISPR 15	LEVEL 2 SELF-CERTIFICATION AND DOCUMENTATION. C-TICK MARK REGISTERED COMPLIANCE BASED ON, IN-HOUSE EMC TESTS, ACA ENDORSED "TECHNICAL CONSTRUCTION FILE" (TCF), THORN UK OR OTHER EMC REPORTS OR CONFORMANCE CERTIFICATES. DECLARATION OF CONFORMITY HELD & APPLICABLE PRODUCT MARKED.
EMC - Immunity - Lighting	NO REQUIREMENT TO COMPLY.	BSEN 61547	EN 61547	IEC 61547	CERTIFICATION IS NOT REQUIRED BUT ALL EUROPEAN MADE PRODUCT AND APPLICABLE COMPONENTS COMPLY.
EMC - Harmonics	AS/NZS 61000-3-2	BSEN 61000- 3-2	EN 61000-3-2	IEC 61000-3-2	COMPLIANCE BY SUPPLIER CERTIFICATION.
Quality Systems	AS/NZS ISO 9001 & 17025	BSEN ISO 9000 & 17025	EN ISO 9000 & 17025	ISO 9000 & 17025	VERIFIED BY INDEPENDENT ASSESSMENT & ACCREDITATION.

Emergency Lighting - Spacing Classification Table To Australian Standard AS2293

Part No.	Description	Spacing Classification
96541889	COLLEGE LED 3700-840 L1200 E2 PC CL	C0 = D63, C90 = D25
96541890	COLLEGE LED 3700-840 L1200 HFI E2 PC CL	C0 = D63, C90 = D25
96061593	COLLEGE 2x28W HF PC CL E2M	Contact THORN Representative
96066831	COLLEGE 2x36W HF PC CL E2M	C0=C40, C90=E12.5
96539109	CADET BARE 1x28W E2M L840	C0=D40, C90=C40
96059805	CADET BARE 1x36W HF E2M L840	CO=D25, C90=C25
96539110	CADET BARE 2x28W E2M L840	CO=D32, C90=C40
96059843	CADET BARE 2x36W HF E2M L840	C0 = D20, C90 = D10
96539111	CADET DIFFUSED 1x28W E2M L840	C0=D25, C90=E32
96059841	CADET DIFFUSED 1x36W E2M L840	C0=D50, C90=C40
96539112	CADET DIFFUSED 2x28W E2M L840	C0=C40, C90=E25
96059845	CADET DIFFUSED 2x36W HF E2M L840	C0=C40, C90=C25
96059344	MAXIBATTEN DIFF 1x28W HF E2M L840	C0=D40, C90 = C32
96059839	MAXIBATTEN DIFF 1x36W E2M L840	C0=D63, C90=C40
96059848	MAXIBATTEN DIFF 2x18W HF E2M L840	C0=D25, C90=C32
96060261	MAXIBATTEN DIFF 2x28W HF E2M L840	C0=D40, C90=C50
96061148	MAXIBATTEN DIFF 2x36W HF E2M L840	C0 = D20, C90 = C25
96544126	SU3 LED2700-840 12x3 MPT EL2 FP 26W	C0=D40, C90=D40
96544131	SU3 LED2700-840 12x3 HFI MPT EL2 FP 26W	C0=D40, C90=D40
96059345	WF 1x28W HF E2M L840	C0=D63, C90=C40
96060929	WF 1x28W HFI E2X L840	C0=D63, C90=C40
96059784	WF 1x36W HF E2M L840	C0=D32, C90=C25
96040892	WF 2x18W HF E2M L840	C0 = D16, C90 = C25
96058445	WF 2x28W HF E2M L840	C0=D50, C90=D20
96060263	WF 2x28W HFI E2X L840	C0=D40, C90=D20
96060109	WF 2x36W HF E2M L840	C0=D100, C90=C80
96061314	IMPACTF2 1x28W HF E2M	C0=D40, C90=C32
96061316	IMPACTF2 1x36W HF E2M	C0 = D20, C90 = C20
96061319	IMPACTF2 2x18W HF E2M	C0 = D16, C90 = C20
96061315	IMPACTF2 2x28W HF E2M	C0=D50, C90=C50
96061317	IMPACTF2 2x36W HF E2M	C0 = D40, C90 = C40
96061323	CORRF2 2x36W HF E2M	C0 = D40, C90 = C40
96540463	GLADIATOR LED 2000 26W HF EL2 L840	C0=D20, C90 =D25
96540412	GLADIATOR LED 4000 49W HF EL2 L840	C0=D20, C90 =D25
96538201	GLADIATOR 1x18W HF EL2	C0=D20, C90 =D25
96538206	GLADIATOR 1x28W HF EL2	C0=D20, C90 =D25
96538202	GLADIATOR 1x36W HF EL2	C0=D20, C90 =D25
96538203	GLADIATOR 2x18W HF EL2	C0=D20, C90 =D25
96538208	GLADIATOR 2x28W HF EL2	C0=D20, C90 =D25
96538204	GLADIATOR 2x36W HF EL2	C0=D20, C90 =D25
96066756	VOYAGER A LED DISK 3W EL2	C0=D40, C90=D40
96066761	VOYAGER A LED DISK 3W EL2X	C0=D40, C90=D32
96539590	VOYAGER A LED DISK 3W EL2 ENCLOSED IP55	C0=C20, C90=D32
96066757	VOYAGER A LED BLD EXIT 2W EL2 WH	C0=C12.5, C90=C12.5



Emergency luminaire vertical measurement planes



Safety and Quality



5 Year Warranty

ZG Lighting Australia Pty Ltd, ABN: 35 002 281 601 of 43-47 Newton Road, Wetherill Park NSW 2164, provide the following:

ZG Lighting Five Year Product Warranty against Defects (Australia only)

We warrant that, if used in accordance with their intended purpose, the products marketed under the trade marks „Zumtobel“ and „Thorn“ are free from manufacturing defects and/or defective material for the warranty period of five (5) years from the invoice date (or date of manufacture if invoice date is not known or available). This guarantee shall apply only to products delivered on or after October 1, 2015. The warranty applies to all products sold by ZG Lighting Australia Pty Ltd., including those branded Zumtobel, Thorn, Bega, Glashutte Limburg or Boom.

The warranty covers the products detailed above, provided that:

- The product is properly installed, and installation is consistent with the manufacturer's instructions, and is installed by suitably trained and qualified installer.
- The product is not subjected to any unauthorized modifications.
- The product is only used for the purpose of illumination, in line with its designated purpose or the designated purpose of a luminaire of its general type.
- There's evidence that the agreed maintenance and operating conditions have been met as per manufacturer's instructions and specifications.
- Any faults or defects attributable to the misuse, abuse, accident or non-observance of the manufacturer's instructions on the part of the user are specifically excluded.

If a claim is made under this warranty and this warranty applies then we may, at our own discretion repair the product, replace the product with identical or equivalent product or refund the original purchase price of the product.

The warranty also covers reasonable labour cost and equipment hire incurred with removing, repairing and replace defected products or components. The cover of labour will be only during normal business hours 7am-4pm. The company will cover costs of necessary equipment that may be required such as scaffolding or lifts. The electrical contractor will be chosen by ZG Lighting Australia. In exceptional cases electrical contractors may be chosen by the customer in which case labour cost and equipment hire will only be covered by ZG Lighting Australia after a quote has been received and approved in writing.

The warranty does not apply to:

- any other ancillary costs incurred in connection with remedying the defects (such as, for instance, disposal of faulty or replaced product, mileage, travel time, callouts, third party supervisors and security personnel; such costs shall be borne by the customer;
- parts subject to wear, such as, for instance, all standard lamps, batteries and starters for luminaires with magnetic ballasts and hard drives; computers and servers containing either hard discs or mechanical parts subject to wear;
- likewise, software defects, bugs or viruses;
- 3rd party components or products which ZG Lighting Australia sells separately (for instance, OEM lamps, ballasts or other componentry that are not fixed to or installed in the luminaire)
- settings and/or parameterizations on facilities that vary on account of wear, fatigue, or dirt; and
- Logistics claims where damages are reported more than 3 months after despatch date from ZG Lighting Australia warehouses.
- products that have been shipped to and installed in a country other than Australia or New Zealand.

In the event of the goods being replaced during the warranty period, the warranty on the replacement goods will expire on the same date as the warranty period of the original goods they are replacing.

All claims or enquiries made under this warranty shall be processed as follows:

1. Within 14 working days of becoming aware of an alleged fault, the customer must contact the company as detailed below.
2. The customer must provide a proof of purchase from the Supplier as well as photographic evidence of the reported fault.
3. If accepted as a valid warranty claim within the terms described in this document, ZG Lighting Australia will make suitable repairs, provide equivalent replacement product or refund the original purchase price of the product.
4. ZG Lighting Australia may request the customer to have goods returned for repair or further investigation.
5. In such cases, the customer will be provided with a Goods Return Authority (GRA) number and ZG Lighting Australia will make arrangements for collecting the goods from the customer at a pre-determined date/time.
6. If, after review of claim or further inspection of goods, the claim is rejected, the customer will be provided with a full explanation, and, if requested, the goods will be returned.

Our goods come with guarantees that cannot be excluded under the Australian Consumer Law. You are entitled to a replacement or refund for a major failure and for compensation for any other reasonably foreseeable loss or damage. You are also entitled to have the goods repaired or replaced if the goods fail to be of acceptable quality and the failure does not amount to a major failure.

Contact for Warranty Claims:

ZG Lighting Australia
43-47 Newton Road, Wetherill Park 2164 NSW
Phone: 1300 139 965
Fax: 1300 139 953
Email: warranty.australia@zumtobelgroup.com

Ensuring Legal Compliance

When you purchase THORN lighting products you can rest assured that every effort has been taken to ensure a quality product that complies with all state and federal legislation. From the 1st March 2016, all luminaires which are to be sold by luminaire manufacturers in Australia must meet with the requirements of RCM (Regulatory Compliance Mark) and be permanently marked with the RCM logo.



This protects you in three ways, first the product is electrically safe, second it will not cause electro magnetic interference for sensitive electronic equipment or digital television and thirdly, in the case of all THORN products, they meet or exceed the required quality standard.

THORN takes great care in complying with the Australian Communications and Media Authority (ACMA) requirements for Electromagnetic Compatibility (EMC) and the Electrical Regulatory Authorities Council (ERAC) requirements for electrical safety.

When you see the RCM mark on a THORN product; you can buy with confidence knowing that the safety of you and your customers are assured.

This is one of the reasons that THORN is able to provide you with a 5 Year Commercial Warranty.

From more Information see: www.acma.gov.au, www.erac.gov.au, or www.fairtrading.nsw.gov.au or ask your local THORN Representative.



THORN Manufacturing Plant, Wetherill Park, Australia

THORN

LIGHTING PEOPLE

Download our free **Thorn Lighting Contractor** app
Our new app has the latest contractor product ranges, 'how to' application design guides and details of where you can buy Thorn products. After one quick sync, you can view the app on the move without the need for internet connectivity.

Suitable for mobile and tablet.



Head Office

Australia and New Zealand
Zumtobel Group (Pacific)
43 Newton Rd
Wetherill Park, NSW 2164
T 1300 139 965
T +61 (0) 2 8786 6000
F +61 (0) 2 9612 2700
W thornlighting.com.au

Sales Contacts

New South Wales and
Australian Capital Territory
T 1300 139 965
F (02) 9612 2700
E nsw@zumtobelgroup.com

Queensland
T 1300 139 965
F (07) 3863 2944
E qld@zumtobelgroup.com

Victoria
T 1300 139 965
F (03) 8331 4688
E vic@zumtobelgroup.com

South Australia
T 1300 139 965
F (08) 8350 4750
E sa@zumtobelgroup.com

Western Australia
T 1300 139 965
F (08) 6400 2101
E wa@zumtobelgroup.com

Tasmania
Westport Agencies
T (03) 6273 0577
F (03) 6273 0575
E tas@zumtobelgroup.com

Northern Territory
Global Lighting Solutions
T (08) 8947 4600
F (08) 8947 3955
E nt@zumtobelgroup.com

Thorn Lighting is constantly developing and improving its products. All descriptions, illustrations, drawings and specifications in this publication present only general particulars and shall not form part of any contract. The right is reserved to change specifications without prior notification or public announcement. All goods supplied by the company are supplied subject to the company's General Conditions of Sale, a copy of which is available on request. All measurements are in millimetres and weights in kilograms unless otherwise stated.

Publication No: CG_AU Publication Date: 10/15

