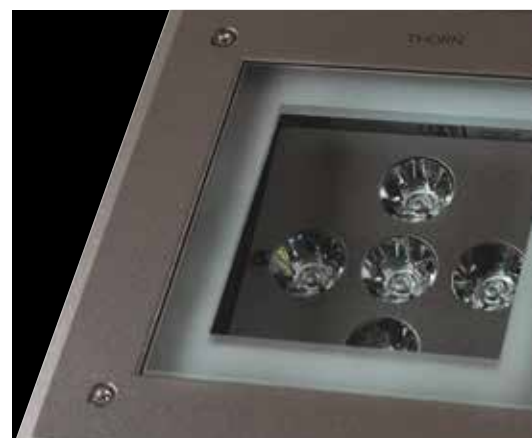


THORN

Product Focus | Autumn 2015



Key Launches	Launches	Upgrades
Indoor	Indoor	Indoor
1 Cetus Mini	7 ArrowFlex	19 AquaForce II LED Sensor
2 HiPak	8 ForceLED Pro	20 EquaLine LED
	9 Jupiter 3 LED Asymmetric	21 HiPak Pro LED
Outdoor	10 Lyric Deco	22 Indus Top LED
3 Altis Area	11 Novaline LED	23 PopPack LED Sensor
4 Altis Sport	12 Omega LED	
	13 Omega LED Circular	Outdoor
5 CiviTEQ	14 Omega Pro	
	15 Voyager Blade	24 E/Fact and Mica
6 Outdoor Lighting Controls	16 Voyager Escape	25 Plurio LED
	17 r2m Refurbishment Kit	26 QBA LED
	18 Sensa DMX	



Cetus Mini

Ideal for replacing traditional halogen downlights in residential and commercial applications, Cetus Mini benefits from a special reflector optic with a beam angle of 36° for visual uniformity. The option of fixed or adjustable recessed LED downlight comes with a high efficacy of 95lm/W. With the integrated LED module it allows a recessed depth of <101mm for installation in shallow ceiling voids. Cetus Mini is available in two finishes, white or chrome. For ease, comfort and control during installation, the luminaire features springs on each side for easy clip into the cut out. Cetus Mini is available with 550lm in colour temperatures of 3000K and 4000K and IP20 or IP65 for use in bathrooms. In addition fire rated (30, 60 or 90 minutes) versions are available.

www.thornlighting.co.uk/CTUM







2

HiPak



A LED high bay luminaire offering an easy refurbishment solution with great value for money. HiPak features single point suspension allowing point for point replacement using a wall and ceiling bracket, pendant or chain suspension. Each luminaire is also equipped with a quick connector for rapid installation. Available in 15 000, 20 000, and 25 000lm, HiPak is designed as a replacement for 250/400W HID luminaires and, in comparison, can significantly reduce energy consumption by up to 46%. Each individual lens contains a cluster of LED which are combined to form a precise optical system, providing light exactly where it is needed. Whether a 'wide' distribution is required for general illumination or 'rack' for logistics/ warehousing, the application demands are met. The cooling fin housing design allows airflow through the luminaire, preventing components from overheating and ensuring optimum performance in harsh industrial environments from -30°C up to +50°C.

HiPak: Saving you time, energy and money.

www.thornlighting.co.uk/HIPK

Altis Area

A powerful LED floodlight providing a high performance, low maintenance and energy efficient alternative to 1 and 2 kW HID floodlights. Offering up to 93 000lm and an efficacy of over 115lm/W, it is equipped with asymmetrical lenses and is the ideal solution for high mast area lighting. For comfort, Altis Area provides excellent control of obtrusive light (0cd at 90°) while tiltable LED modules allow possibilities for superior lighting design. Compact and lightweight Altis Area benefits from an optimised lumen/weight/size ratio and an exceptionally small and lightweight gear tray for ease of retrofitting as well as reduced structural costs. Altis Area can be fully controlled via DALI to maximise energy savings and has a 100 000-hour lifetime to deliver substantial maintenance cost savings. For ease of installation it is supplied with a pre-wired floodlight and gear tray. Optional integral thermal protection guarantees performance over lifetime.

www.thornlighting.co.uk/ALTA







THORN



4

Altis Sport



A powerful LED floodlight constructed for demanding outdoor and indoor sports applications. The floodlight offers high performance, unique quality of light with a colour rendering index of 90 (5700K) suitable for HDTV broadcasting and extended lighting controls capabilities. In addition the luminaire delivers flicker-free lighting for super slow motion images of the best quality. Also available in the range is a luminaire covering general training and competition requirements with 4000K. Delivering up to 90 000lm in its 5700K version, Altis Sport facilitates superior and comfortable lighting design with fully tilttable LED modules and the possibility to include different optics into one floodlight. The luminaire is fully compatible with a variety of controls solutions, extending its application possibility to creating effects and entertainment. All these features ensure players, fans and TV spectators have the best possible viewing experience. Compact and lightweight, Altis Sport benefits from an optimised lumen/weight/size ratio. Additionally the gear tray is exceptionally small and has a low weight making it easy for contractors to integrate it into existing cabinets and stadium structures. To further simplify the installation process both floodlight and gear tray are supplied pre-wired.

www.thornlighting.co.uk/ALTS

CiviTEQ



A versatile LED road lantern family offering performance and value to provide a cost-effective lighting solution for new and refurbishment projects. Suitable for lighting classes up to Me3, CiviTEQ is a class leading compact and lightweight street lighting luminaire. It is available in small (5,7kg with an output of 8 600lm) or large (9,6kg with an output of 17 000lm) sizes. The lantern is easy to handle and install, especially when replacing old HID lightweight fittings of low windage. With an R-PEC optic offering 12 types of light distribution, CiviTEQ provides precise light placement with no waste light. An Optibloc® double IP66 sealing system for the gear compartment and optic ensures longevity and performance throughout the luminaire's low cost of ownership 100 000-hour lifetime. As well as highly efficient LED (up to 126Llm/W) CiviTEQ is fitted with Thorn's bi-power switch as standard to maximise energy savings through night time dimming. A performance version is also available with advanced lighting control options.

www.thornlighting.co.uk/CTEQ









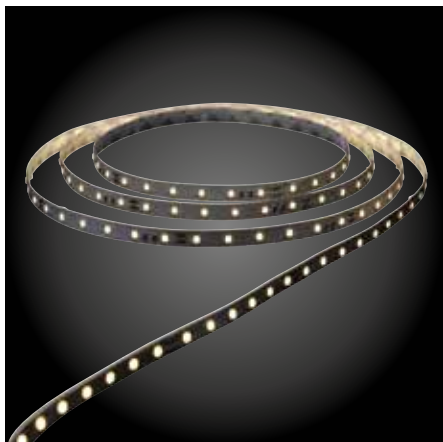
6

Outdoor Lighting Controls (OLC)

A radio frequency (RF) based outdoor lighting controls system providing energy savings and remote data management for energy conscious cities. A simple portfolio designed to manage luminaire groups or lighting applications for a complete city. The OLC offers complete application and cost flexibility with sensor-based and non-sensor based RF nodes. One of the innovative features includes the "moving light" functionality which programs the light to brighten up and then trail cars, bicycles and pedestrians, guaranteeing that light is only activated when needed, reducing energy consumption. To make life simpler and to be future ready OLC works on an open protocol to enable operation with other smart city functions and has been designed with future proofed RF technology; ready for whatever lies ahead.

www.thornlighting.co.uk

7



ArrowFlex

A 5m reel of compact LED strips ideal for creating atmosphere and drama to retail, residential and hospitality applications. 60 highly efficient LED (80lm/W) per metre ensure shadow free performance with excellent thermal control. ArrowFlex is supplied with an adhesive back; ready to be surface mounted either vertically or horizontally providing a continuous line of homogeneous light. For additional flexibility strips can be cut to length on site and joined via a solderless connection system, to match interior design requirements. Available in 400 - 870lm/m and colour temperatures of 2700K, 3000K, 4000K to suit a great variety of applications.

www.thornlighting.co.uk/ARFX

8

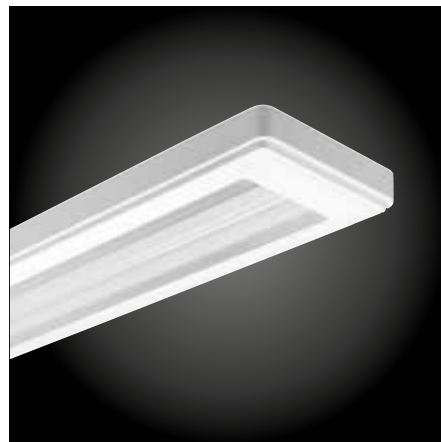


ForceLED Pro

A dedicated high impact resistant LED luminaire designed to tackle harsh environments. ForceLED Pro's scientifically developed rear gasket and side and rear glands allow ingress protection to be maintained at IP66 after installation. Additionally this robust industrial luminaire can operate in ambient temperatures up to 35°C and is 4xIK10 rated allowing it to withstand large impacts. It features a one key operation to unlock the diffuser offering easy installation while the safety locking mechanism ensures effective vandal resistance. This highly efficient luminaire (110lm/W) is available in two light outputs 4 500lm and 7 000lm with CRI > 80, ideal for specialist industrial applications.

www.thornlighting.co.uk/FORP

9



Jupiter 3 LED Asymmetric

A practical choice for slim and efficient direct lighting, Jupiter 3 LED Asymmetric now offers asymmetric lighting options to provide efficient lighting for whiteboards. This product completes the product family for applications including education and offices. Jupiter 3 LED Asymmetric achieves a minimal distance between the wall and luminaire to ensure a high level of uniformity on whiteboards and create an inconspicuous lighting system. Single or continuous mounting options fit with all whiteboard lengths. Jupiter 3 LED Asymmetric is available with bracket, suspension and surface mounting options and colour temperatures of 3000K or 4000K. High efficacy (85lm/W) ensures low energy consumption while a HFI-X driver provides on/off and DALI dimming as standard to maximise energy savings. Jupiter 3 LED Asymmetric is supplied ready to install out of the box for ease and speed of installation.

www.thornlighting.co.uk/JUP3

10



Lyric Deco

A stylish family of decorative LED fittings comprising of pendant, wall and floor mounted luminaires which offer soft diffused light. The design is pleasing to the eye with a curved satin opal glass diffuser that is replicated throughout the range – perfect for adding an elegant touch to applications which require a statement. Lyric Deco benefits from the latest LED technology offering 50 000-hour lifetime and efficacies from 94Lm/W to 124Lm/W which helps to create energy conscious design; a choice of colour temperatures (3000k or 4000K) is also available.

www.thornlighting.co.uk/LYRD

11



Novaline LED

A slim, circular and versatile luminaire for wall or ceiling mounting, updated with the latest LED technology. Novaline LED is now available in two sizes with four lumen packages – 1 250, 1 800, 2 500 and 3 500 lumen – as well as 3000K and 4000K colour temperatures for lighting design and application flexibility. Increased LED efficacy provides >100Lm/W while new energy saving options include DALI dimming, integrated presence detectors and corridor function. The entire Novaline LED range comes in a crisp, clean RAL9016 bezel colour to blend effortlessly into a variety of settings. Dark spots are eliminated with the new LED light source which provides an evenly blended light distribution. Novaline LED is available with E3 and E3TX emergency options.

www.thornlighting.co.uk/NOVN

12



Omega LED

The versatile Omega LED luminaire range has been extended to include a 600X1200 variant, offering flexible mounting options, including recessed and surface, using a simple mounting kit. As well as through-life flexibility, Omega LED uses less energy compared to fluorescent equivalents, allowing a short payback time and substantial energy savings. With an IP44 rating, Omega LED extends beyond the traditional applications of circulation areas and general illumination to restrooms and hospitals. Omega LED is an easy retrofit solution for traditional luminaires. It offers a choice of colour temperatures (3000K and 4000K) and a good colour rendering index.

www.thornlighting.co.uk/OMGL

13



Omega LED Circular

A slim circular LED luminaire providing an alternative design aesthetic for circulation areas and corridors. Its IP44 rating extends the application possibilities beyond the traditional to restrooms and hospitals. Omega LED Circular completes the Omega range retaining its outstanding lighting performance, using less energy compared to fluorescent equivalents, allowing a short payback time and substantial energy savings. It has a unique installation method, where the semi-recessed box simply clips onto the ceiling tile, making life easier for installers. Available in three sizes (200mm, 400mm, 500mm), three outputs (1 600lm, 2 800lm, 3 200lm) and two colour temperatures (3000K and 4000K) with a choice of semi-recessed and suspended mounting options and dimming, Omega LED Circular answers all project requirements.

www.thornlighting.co.uk/OMGC

14



Omega Pro

A striking edge lit flat panel range with outstanding glare control to offer comfort and style for office and education lighting. Omega Pro is fitted with a Glare ProTech prismatic optic. As a result the luminaire delivers class leading performance to reduce screen glare and exceeds the requirements of EN12464, offering great visual comfort combined with high efficiency. Consequently, due to the optic and the light distribution it is possible to install 25% less luminaires in large office spaces, compared to fluorescent equivalents. Additionally, the high performance and low maintenance LED reduce energy consumption by up to 55%. Just 12mm thick, Omega Pro's edge lit panels provide smooth, sleek and slim line styling with a bright and ultra-modern aesthetic. To add to Omega Pro's versatility there is now a new 600X1200 solution for increased comfort in large spaces, this variant includes dimming and integrated emergency options. The whole Omega Pro range provides efficacies of over 100Lm/W.

www.thornlighting.co.uk/OMPL

15



Voyager Blade

An attractive yet affordable LED emergency sign for internal applications where a minimal slim aesthetic is a must. Each luminaire offers design freedom as a single code can be wall or ceiling mounted. Furthermore the product can be supplied single or double sided and there is an option for a suspended variant. Voyager Blade benefits from reduced power consumption compared to T5 8W exit signs and the long-life advantages of LED technology. Supplied complete with left and right legends it achieves viewing distances of up to 23 metres. Additional legend kits are available to order separately. Flexibility is further enhanced with a choice of 3-hour duration maintained or non-maintained operation.

www.thornlighting.co.uk/VOYB

16



Voyager Escape

A simple and unobtrusive 3W emergency LED kit, utilising the latest LED technology to provide a good quality, performance luminaire for indoor use. With a light output of 110lm it can easily achieve 8 metres spacing thus optimising the number of luminaires required. Voyager Escape has been designed with the installer in mind, with a plug and play fixing method reducing installation costs and time. Lastly the kit offers 3-hr emergency non maintained operation, plus reduced power consumption and minimal maintenance all with a 25 000-hr lifetime @L50.

www.thornlighting.co.uk/VOYE

17



r2m Refurbishment Kit

A simple, energy saving lighting controls kit based on the ready2mains™ technology from Tridonic for r2m luminaires, perfect for existing applications without DALI functionality.

A single r2m refurbishment kit offers an instant out of the box lighting controls solution for all your control needs. It provides quick and easy installation through 'rewireless' dimming, presence and daylight control. This means that existing cables can be reused for the new installation without dedicated dimming cables to the luminaires. The kit includes everything that is needed for upgrading the controls in existing installations, a gateway and a sensor. There is no need for costly and time consuming commissioning. More than 50% in energy costs can be saved. The r2m refurbishment kit is compatible with the r2m versions of Omega LED, Omega Pro and Chalice ranges at the moment.

www.thornlighting.co.uk/R2MR

18



Sensa DMX

A standalone DMX controller kit complete and ready to create colours, sequences and time management for indoor and outdoor applications. Sensa DMX is designed to make lighting control easy, supplied complete with Sensa Lighting software; ready to go straight from the box. To increase the simplicity there are eight pre-set scenarios for instant use. With up to 512 DMX channels and memory for 99 scenes, lighting performances are scalable and cater for large or small projects. Touch screens, splitters, and pre-wired IP65 kit boxes are also available to extend the design possibilities.

www.thornlighting.co.uk/SEND

19



AquaForce II LED Sensor

A range of IP65-rated industrial LED luminaires for high quality low energy lighting in wet, dusty environments. AquaForce II LED is now available with a pre-assembled PIR sensor for switch operation to offer an easy to order and easy to install solution which maximises energy savings. An optional remote control provides additional convenience. For flexibility and suitability in industrial applications, AquaForce II LED has a range of installation features including quick fix with connect options, through wiring and BESA box compatibility (600mm spacing). A glass reinforced canopy and stainless steel toggles ensure durability.

www.thornlighting.co.uk/AQUL

20



Equaline LED

A simple and pure aluminium linear LED luminaire offering new and improved features including efficacy up to 100lm/W for increased energy savings and recessed, surface and suspension mounting options. Equaline LED creates a stimulating and uplifting environment through direct and direct/indirect illumination to improve uniformity and atmosphere. The recessed and surface mounted versions are suitable for direct illumination and the suspended version is suitable for direct/indirect illumination. Several versions benefit from low glare to meet office standards (UGR < 19) and are available singularly or as part of a system to follow all room shapes and sizes. System versions are available with several types of accessories as well as emergency and continuous system options. All Equaline LED luminaires include DALI dimming.

www.thornlighting.co.uk/EQUL

21



HiPak Pro LED

An energy efficient LED high bay luminaire now available with an asymmetric optic dedicated to sports applications and a higher lumen output up to 18 500lm. A robust sports bracket is also available, specifically designed to withstand sport environments. Featuring a high frequency ballast, HiPak Pro LED is up to 45% more efficient than traditional HID light sources. Dedicated individual LED optics provide precise light control for a wide range of high level mounting applications. An innovative body design ensures optimal thermal management and a low maintenance LED life up to 50 000 hours. HiPak Pro LED is DALI dimmable or available with motion or daylight sensors.

www.thornlighting.co.uk/HIPP

22



Indus Top LED

An industrial corrosion-resistant LED batten offering improved performance including even greater efficacy (>110 Llm/W) and increased light output (8 000lm). Indus Top LED's patented quick access hatch allows direct access to the terminal block without opening/closing the luminaire for ease of installation and maintenance. Ideal for refurbishment projects, it features the same fixation points as traditional fluorescent luminaires for point for point replacement. An integral hook allows tool-free catenary suspension mounting. Indus Top LED is sealed to IP23 to provide splash protection. It is available in a choice of 3000K or 4000K colour temperatures and with optional industrial control gear to give outstanding reliability and improved protection against voltage peaks.

www.thornlighting.co.uk/INDT

23

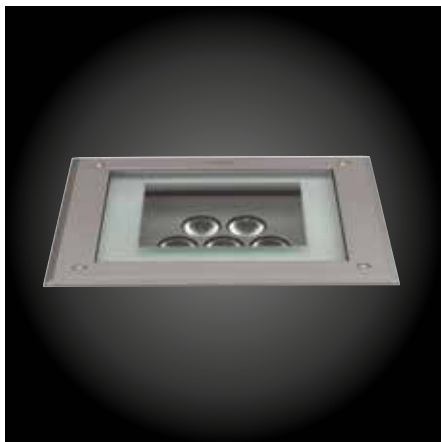


PopPack LED Sensor

An extension to the popular PopPack batten range incorporating an integral prewired PIR sensor to achieve additional energy savings with ease. PopPack LED Sensor is available with three lumen packages, including HFI and E3 options, and has identical fixation and connection points (BESA ready) to make it ideal for new and refurbishment projects. PopPack LED Sensor is highly efficient (>100Llm/W) for a quick return on investment and can reduce energy consumption significantly compared to traditional fluorescent alternatives. A replaceable LED engine allows performance to be easily maintained over time. PopPack LED Sensor has a 4000K colour temperature and a good colour rendering index of more than 80. As well as BESA mounting, through wiring is possible to substantially reduce installation costs.

www.thornlighting.co.uk/POPL

24



E/Fact and Mica

A range of walk- and drive-over luminaires compliant with EN60598-2-13: limited surface temperatures and upgraded to provide up to 53% more light output. The E/Fact square and circular walk-over and Mica circular drive-over recessed LED luminaires are available with semi-frosted glass for illumination and frosted glass for decorative applications. Both can be used with holographic films to transform the light beam to beautifully illuminate buildings and their surrounds. A wide choice of sizes, frames, mounting depths, control technologies and tilting angle adjustments ensure the right effect for the application.

www.thornlighting.co.uk/EFCT
www.thornlighting.co.uk/MICA

25



Plurio LED

A range of post top LED lanterns combining high performance with unobtrusive light, ideal for residential and urban areas. This popular range has been updated to present higher lumen packages up to 5 000lm and improved spacing with new dedicated cluster packages. The Plurio LED family includes two distinctive shape options for style preference – Symmetric, Wide Street and Narrow Street and features the A-PEC optic for exceptional efficacy – 95lm/W. Bi-power dimming is included as standard, extending energy saving possibilities. With an expected lifetime of more than 100 000h (25°C, B50L90) it offers long life and a low cost of ownership. Tightly controlled optics prevent upward light or light spill ensuring that this family complies with the most restrictive anti-pollution laws.

www.thornlighting.co.uk/PLRL

**QBA LED**

A compact, rectangular floodlight featuring white and coloured LED to creatively light façades and architectural features. Engineered for long life and high energy efficiency, QBA's LED have been upgraded to offer up to 66% more light output. QBA LED features intensive light distribution in static or dynamic versions. This includes saturated monochromatic with 8 LED in red, green, blue and two whites (3000K and 4000K) as well as a RGB colour mixing version with 4 LED driven by DMX protocol. A selection of attachments creates a variety of beam distributions, including a glass filter to decrease the colour temperature on white versions.

www.thornlighting.co.uk/QBLD

THORN

LIGHTING PEOPLE

ZG Lighting (UK) Limited

Durhamgate, Spennymoor,
County Durham, DL16 6HL
Tel: +44 (0) 1388 420 042

Sales support

Tel: +44 (0) 844 855 4810
Fax: +44 (0) 844 855 4811

Quotations

Tel: +44 (0) 191 301 3036
uk.quotations@zumtobelgroup.com

TCS (After Sales)

Tel: +44 (0) 191 301 3939
tcs.uk@zumtobelgroup.com

Technical support

Tel: +44 (0) 844 855 4812
Fax: +44 (0) 191 301 3107
technical@zumtobelgroup.com

Spare parts

Tel: +44 (0) 191 301 3131
Fax: +44 (0) 191 301 3038
spares@zumtobelgroup.com

Literature requests

Brochures on specific
products/ranges
literature@zumtobelgroup.com

www.thornlighting.co.uk



5 Year Warranty

As a globally leading luminaire manufacturer, Thorn Lighting provides a five-year warranty for its complete product range within all European Countries.

Thorn Lighting is constantly developing and improving its products. All descriptions, illustrations, drawings and specifications in this publication present only general particulars and shall not form part of any contract. The right is reserved to change specifications without prior notification or public announcement. All goods supplied by the company are supplied subject to the company's General Conditions of Sale, a copy of which is available on request. All measurements are in millimetres and weights in kilograms unless otherwise stated.

Publication No: PROD_FOCUS_AUTM (GB) Publication Date: 10/15



ISO 9001:2008
Reg: AT00005/5
ISO 14001:2004
Reg: AT00247/2
Manufacturing