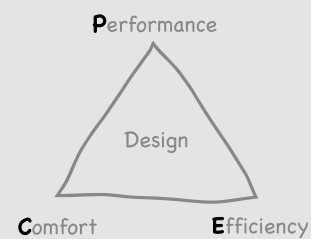


Sonpak, our best selling general purpose floodlight has been completely redesigned – **Sonpak LX!**

A new, efficient discharge floodlight for security applications, building facades and perimeters, car parks, loading bays and precincts



**Performance:** Improved light distribution

**Efficiency:** European quality level of components

**Comfort:** Ease of installation, weight reduced

- **Improved** photometric performance
- Smaller, lighter and **easier to install**
- **Streamlined shape** to reduce windage
- **Supplied complete** with a choice of high pressure sodium or metal halide lamps
- **Two sizes:** 70W and 150/250/400W



# THORN

Lighting people and places

## Thorn Lighting Main Offices

### Head Office

Thorn Lighting Limited  
Silver Screens, Elstree Way, Borehamwood,  
Hertfordshire, WD6 1FE, UK  
Tel: (44) 20 8732 9800  
Fax: (44) 20 8732 9801  
Website: www.thornlighting.com

### Australia

Thorn Lighting Pty Limited  
13 Cooper Street, P O Box 188, Smithfield,  
NSW 2164, Australia  
Tel: (61) 2 9604 4300  
Fax: (61) 2 9604 4588  
E-mail: info@thornlight.com.au  
Website: www.thornlight.com.au

### Austria

Thorn Licht GmbH  
Donau-City-Straße 11, 1220 Wien, Austria  
Tel: (43) 1 202 66 11  
Fax: (43) 1 202 66 11 12  
E-mail: office@thorn.at

### China

Thorn Lighting (Guangzhou) Operations Ltd  
No.12 Lian Yun Road, Eastern Section, GETDD,  
Guangzhou 510760, China  
Tel: (86) 20 3228 2706  
Fax: (86) 20 3228 1777  
E-mail: sales@thorn.com.cn

Thorn Lighting (Tianjin) Co. Ltd  
332 Hongqi Road, Tianjin 300190, China  
Tel: (86) 22 8369 2303  
Fax: (86) 22 8369 2302  
E-mail: marketing@thornl.com.cn

### Czech Republic

Thorn Lighting CS spol. s.r.o.,  
Na Březince 6/930, 150 00 Praha 5  
Czech Republic  
Tel: (420) 224 315 252  
Fax: (420) 233 326 313  
E-mail: thorn@thornlight.cz  
Website: www.thornlight.cz

### Denmark

Thorn Lighting A/S  
Albuen 44, 6000 Kolding, Denmark  
Tel: (45) 7696 3600  
Fax: (45) 7696 3601  
Website: www.thornlight.dk

### Estonia

Thorn Lighting  
Eesti Filiaal, Tatari 23/25, EE-10116 Tallin, Estonia  
Tel: (372) 656 3505  
Fax: (372) 656 3227  
E-mail: ando@thorn.ee

### France

Thorn Europe SA  
156 Boulevard Haussmann,  
Cedex 08, Paris 75379, France  
Tel: (33) 1 49 53 6262  
Fax: (33) 1 49 53 6240  
Website: www.thorn.fr

### Hong Kong

Thorn Lighting (Hong Kong) Limited  
Unit 4301, Level 43, Tower 1, Metroplaza,  
223 Hing Fong Road, Kwai Chung, N.T.,  
Hong Kong, China  
Tel: (852) 2578 4303  
Fax: (852) 2887 0247  
E-mail: info@thorn.com.hk  
Website: www.thorn.com.hk

### Ireland

Thorn Lighting (Ireland) Limited  
320 Harold's Cross Road, Dublin 6W, Ireland  
Tel: (353) 1 4922 877  
Fax: (353) 1 4922 724  
E-mail: enq.dublin@thornlight.com

### Italy

Thorn Europeane Spa  
Via G Di Vittorio, 2, Cadrano di Granarolo,  
Bologna 40057, Italy  
Tel: (39) 051 763391  
Fax: (39) 051 763088  
E-mail: info@thornlighting.it  
Website: www.thornlighting.it

### Latvia

Thorn Lighting  
Representative Office, Skolas Street 21-216,  
Riga LV 1010, Latvia  
Tel: (37) 7 332 660  
Fax: (37) 7 332 660

### Lithuania

Thorn Lighting  
Representative Office, Kalvariju Street 1,  
Vilnius 09310, Lithuania  
Tel: (370) 5 2 750 701  
Fax: (370) 5 2 731 480

### New Zealand

Thorn Lighting (NZ) Ltd  
399 Rosebank Road, P O Box 71134, Rosebank,  
Auckland 7, New Zealand  
Tel: (64) 9 828 7155  
Fax: (64) 9 828 7591

### Norway

Thorn Lighting AS  
Industriveien 11, P O Box 63, Skytta 1483, Norway  
Tel: (47) 6706 2233  
Fax: (47) 6706 0351  
E-mail: s.kvernberg@thornlight.no

### Poland

Thorn Lighting Polska Sp.z o.o.,  
Ul. Gazowa 26A, Wrocław 50-513, Poland  
Tel: (48) 71 7833 740  
Fax: (48) 71 3366 029  
E-mail: thorn@thornlight.pl  
Website: www.thornlight.pl

### Russia

Thorn Lighting  
Novoslobodskaya Str., 21, office 406 Business Center  
"Novoslobodskaya 21", Moscow 103030, Russia  
Tel: (7) 495 981 35 41  
Fax: (7) 495 981 35 42  
E-mail: office.moscow@thorn.ru  
Website: www.thorn.ru

### Thorn Lighting

Representative Office, 1 Artileriyevskaya str.,  
1 BC 'Europa House', St Petersburg 191104, Russia  
Tel: (7) 812 718 8112  
Fax: (7) 812 718 8119  
E-mail: office.petersburg@thorn.ru  
Website: www.thorn.ru

### Singapore

Thorn Lighting (Singapore) Pte Ltd  
5 Kaki Buki Crescent, 04-02 Kayotech Building,  
416238 Singapore  
Tel: (65) 6844 5800  
Fax: (65) 6745 7707  
E-mail: info@thornlight.com.sg  
Website: www.thornlight.com.sg

### Sweden

Thorn Lighting AB  
Industrigatan, Box 305,  
SE-261 23 Landskrona, Sweden  
Tel: (46) 418 520 00  
Fax: (46) 418 265 74  
E-mail: thorn@thornlight.se  
Website: www.thornlight.se

### United Arab Emirates

Thorn Lighting Ltd Dubai  
Al Shoola Building, Office 301, Block E,  
PO Box 1200, Deira, Dubai, UAE  
Tel: (971) 4 2940181  
Fax: (971) 4 2948838  
E-mail: thluae@emirates.net.ae

### Thorn Gulf LLC

Al Shoola Building, Office 301/2,  
Block E, PO Box 1200, Deira, Dubai, UAE  
Tel: (971) 4 2948938  
Fax: (971) 4 2948838  
E-mail: thorg@emirates.net.ae

### United Kingdom

Thorn Lighting Limited  
Silver Screens, Elstree Way,  
Borehamwood, Hertfordshire, WD6 1FE, UK  
Tel: (44) 20 8732 9800  
Fax: (44) 20 8732 9801  
E-mail: brochures@thornlight.com  
Website: www.thornlighting.co.uk

### International Sales

Thorn Lighting Limited  
156 Boulevard Haussmann,  
Cedex 08, Paris 75379, France  
Tel: (33) 1 49 53 6262  
Fax: (33) 1 49 53 6240

Thorn Lighting Limited  
Silver Screens, Elstree Way, Borehamwood,  
Hertfordshire, WD6 1FE, UK  
Tel: (44) 20 8732 9802  
Fax: (44) 1708 741 827  
E-mail: international.sales@thornlight.com

www.thornlighting.com

# THORN Sonpak LX

A new range of easy to install general purpose floodlights supplied complete with lamp



Thorn Lighting is constantly developing and improving its products. All descriptions, illustrations, drawings and specifications in this publication present only general particulars and shall not form part of any contract. The right is reserved to change specifications without prior notification or public announcement. All goods supplied by the company are supplied subject to the company's General Conditions of Sale, a copy of which is available on request. All measurements are in millimetres and weights in kilograms unless otherwise stated.

Publication No: 393 (INT) Publication Date: 11/06

# Sonpak LX7

A general purpose floodlight supplied with a 70W high pressure sodium or metal halide lamp



Compact design

Easy access via hinged visor

- Tough, polypropylene body
- Choice of symmetrical (S/S) or asymmetrical (A/S) reflector
- Vandal resistant construction with high impact clear polycarbonate visor
- Integral control gear
- Attachments available
- Sealed to IP65
- Especially suitable for low mounting heights of 3-6m for close offset lighting of buildings
- Photocell versions available

### Applications

Suitable for small area applications such as yards, car parks, building façades, perimeters and gardens



Easy installation of attachments



Louvre attachment

# Sonpak LX15/25/40

A general purpose floodlight supplied with a 150, 250 or 400W high pressure sodium or metal halide lamp



Simple aiming device

Easy access via hinged front glass

- Easy to install with drop down front glass and cable entry
- Robust die-cast aluminium body
- Choice of symmetrical (S/S) or asymmetrical (A/S) reflector
- Toughened front glass
- Integral control gear
- Attachments available
- Sealed to IP65

### Applications

Suitable for large area applications such as loading bays, town squares, precincts, parks or large building façades



Easy installation of attachments



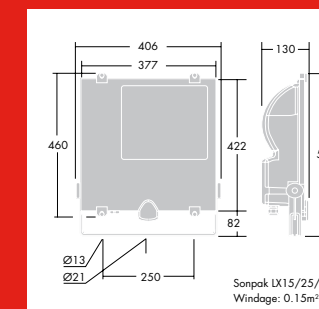
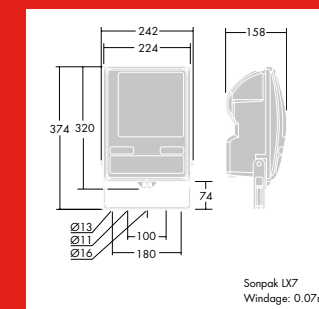
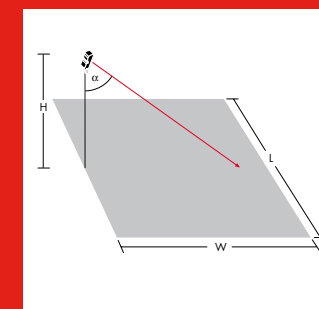
Louvre attachment

Sonpak LX7 A/S	
Lamp	HSE-I
Wattage	70W
Mounting height (H)	5m
Width (W) x Length (L)	10x10m
Average horizontal illuminance	17
Uniformity (minimum/average)	0.1
Aiming angle (α)	20°

Sonpak LX7 A/S	
Lamp	HSE-I
Wattage	70W
Mounting height (H)	7m
Width (W) x Length (L)	15x15m
Average horizontal illuminance	9
Uniformity (minimum/average)	0.1
Aiming angle (α)	20°

Sonpak LX15/25/40 A/S		
Lamp	HST	HST
Wattage	150W	150W
Mounting height (H)	7m	10m
Width (W) x Length (L)	20x20m	25x20m
Average horizontal illuminance	18	14
Uniformity (minimum/average)	0.1	0.1
Aiming angle (α)	25°	10°

Sonpak LX15/25/40 A/S		
Lamp	HST	HST
Wattage	250W	400W
Mounting height (H)	12m	15m
Width (W) x Length (L)	30x30m	35x25m
Average horizontal illuminance	14	25
Uniformity (minimum/average)	0.2	0.1
Aiming angle (α)	30°	15°



Visor attachment



Spigot accessory Ø76mm (LX7/15/25/40)

### Lamps

- ☞ HSE-I (SE-I) 70W high pressure sodium. Cap: E27
- ☞ HIT-DE (MD) 70W metal halide. Cap: RX7s

### Materials/Finish

Body: polypropylene, finished black  
Visor: polycarbonate  
Screws: chrome galvanised steel  
Reflector: hammered aluminium  
Gasket: anti-ageing rubber  
Stirrup: mild steel painted black

### Installation/Mounting

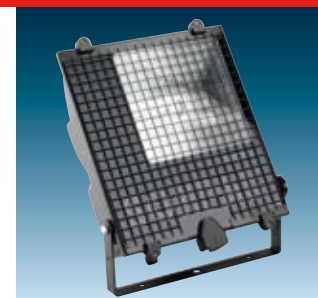
All products have one cable glanded entry for 8-11mm o/d cable with 3 pole terminal block for 3 x 10mm<sup>2</sup>.  
Stirrup fixed by single bolt through 16mmØ hole. Two additional 11mmØ fixing holes at 100mm centres, with a further two 13mmØ fixing holes at 180mm centres.

### Standards

Designed and manufactured to comply with EN 60598.  
Ⓢ Class I Electrical.  
960°C fire retardant.  
Ta Max. +25°C.  
IK08 ⚡⚡⚡ IP65 CE



Visor attachment



Wire guard attachment

### Lamps

- ☞ HST (ST) 150-400W high pressure sodium. Cap: E40
- ☞ HIT (MT) 150-400W metal halide. Cap: E40

### Materials/Finish

Body: die-cast aluminium, painted black  
Glass: 5mm flat toughened  
Screws: chrome galvanised steel, stainless steel for external  
Reflector: aluminium sheet  
Gasket: foamed silicone  
Stirrup: mild steel painted black

### Installation/Mounting

All products have one cable glanded entry for 9-12mm o/d cable with 3 pole terminal block for 3 x 10mm<sup>2</sup>.  
Stirrup fixed by single bolt through 21mmØ hole. Two additional 13mmØ fixing holes at 250mm centres.

### Standards

Designed and manufactured to comply with EN 60598.  
Ⓢ Class I Electrical.  
960°C fire retardant.  
Ta Max. +25°C.  
IK06 ⚡⚡⚡ IP65 CE

## Sonpak LX7

### Ordering Guide

Description	Ilcos Code	Socket	Weight (Kg)	SAP code
<b>Sonpak LX7</b>				
SONPAK LX 70W 230V HIT-DE/RX7S/620 A/S	MD	RX7S	2.9	96231763
SONPAK LX 70W 230V HIT-DE/RX7S/620 S/S	MD	RX7S	2.9	96231764
SONPAK LX 70W 230V HSE-I/E27/220 A/S	SE-I	E27	2.9	96231761
SONPAK LX 70W 230V HSE-I/E27/220 S/S	SE-I	E27	2.9	96231762
SONPAK LX 70W 240V HSE-I/E27/220 A/S	SE-I	E27	2.9	96232640
SONPAK LX 70W 240V HIT-DE/RX7S/620 A/S	MD	RX7S	2.9	96232642
<b>Sonpak LX7 with Photocell</b>				
SONPAK LX 70W 240V HSE-I/E27 A/S P	SE-I	E27	2.9	96232641
SONPAK LX 70W 240V HIT-DE/RX7S A/S P	MD	RX7S	2.9	96232643
<b>Attachments</b>				
SONPAK LX 70W LV		LOUVRE	0.8	96250690
SONPAK LX 70W VS		VISOR	1.0	96250691
SONPAK LX MA 76		SPIGOT	2.0	96250695

A/S - Asymmetrical, S/S - Symmetrical, P - Photocell

## Sonpak LX15/25/40

### Ordering Guide

Description	Ilcos Code	Socket	Weight (Kg)	SAP code
<b>Sonpak LX15</b>				
SONPAK LX 150W 230V HIT/E40/745 A/S	MT	E40	7.6	96231767
SONPAK LX 150W 230V HIT/E40/745 S/S	MT	E40	7.6	96231768
SONPAK LX 150W 230V HST/E40/220 A/S	ST	E40	7.6	96231765
SONPAK LX 150W 230V HST/E40/220 S/S	ST	E40	7.6	96231766
SONPAK LX 150W 240V HIT/E40/745 A/S	MT	E40	7.6	96232645
SONPAK LX 150W 240V HST/E40/220 A/S	ST	E40	7.6	96232644
<b>Sonpak LX25</b>				
SONPAK LX 250W 230V HIT/E40/745 A/S	MT	E40	7.2	96231771
SONPAK LX 250W 230V HIT/E40/745 S/S	MT	E40	7.2	96231772
SONPAK LX 250W 230V HST/E40/220 A/S	ST	E40	7.8	96231769
SONPAK LX 250W 230V HST/E40/220 S/S	ST	E40	7.8	96231770
SONPAK LX 250W 240V HIT/E40/745 A/S	MT	E40	7.2	96232647
SONPAK LX 250W 240V HST/E40/220 A/S	ST	E40	7.8	96232646
<b>Sonpak LX40</b>				
SONPAK LX 400W 230V HIT/E40/742 A/S	MT	E40	7.8	96231775
SONPAK LX 400W 230V HIT/E40/742 S/S	MT	E40	7.8	96231776
SONPAK LX 400W 230V HST/E40/220 A/S	ST	E40	9.0	96231773
SONPAK LX 400W 230V HST/E40/220 S/S	ST	E40	9.0	96231774
SONPAK LX 400W 240V HIT/E40/742 A/S	MT	E40	7.8	96232649
SONPAK LX 400W 240V HST/E40/220 A/S	ST	E40	9.0	96232648
<b>Attachments</b>				
SONPAK LX 150/250/400W LV		LOUVRE	1.2	96250692
SONPAK LX 150/250/400W VS		VISOR	1.3	96250693
SONPAK LX 150/250/400W WG		WIRE GUARD	1.0	96250694
SONPAK LX MA 76		SPIGOT	2.0	96250695

A/S - Asymmetrical, S/S - Symmetrical