

THORN

Promenade LED

Elegant bollard providing light and colour in urban areas



Light and Colour



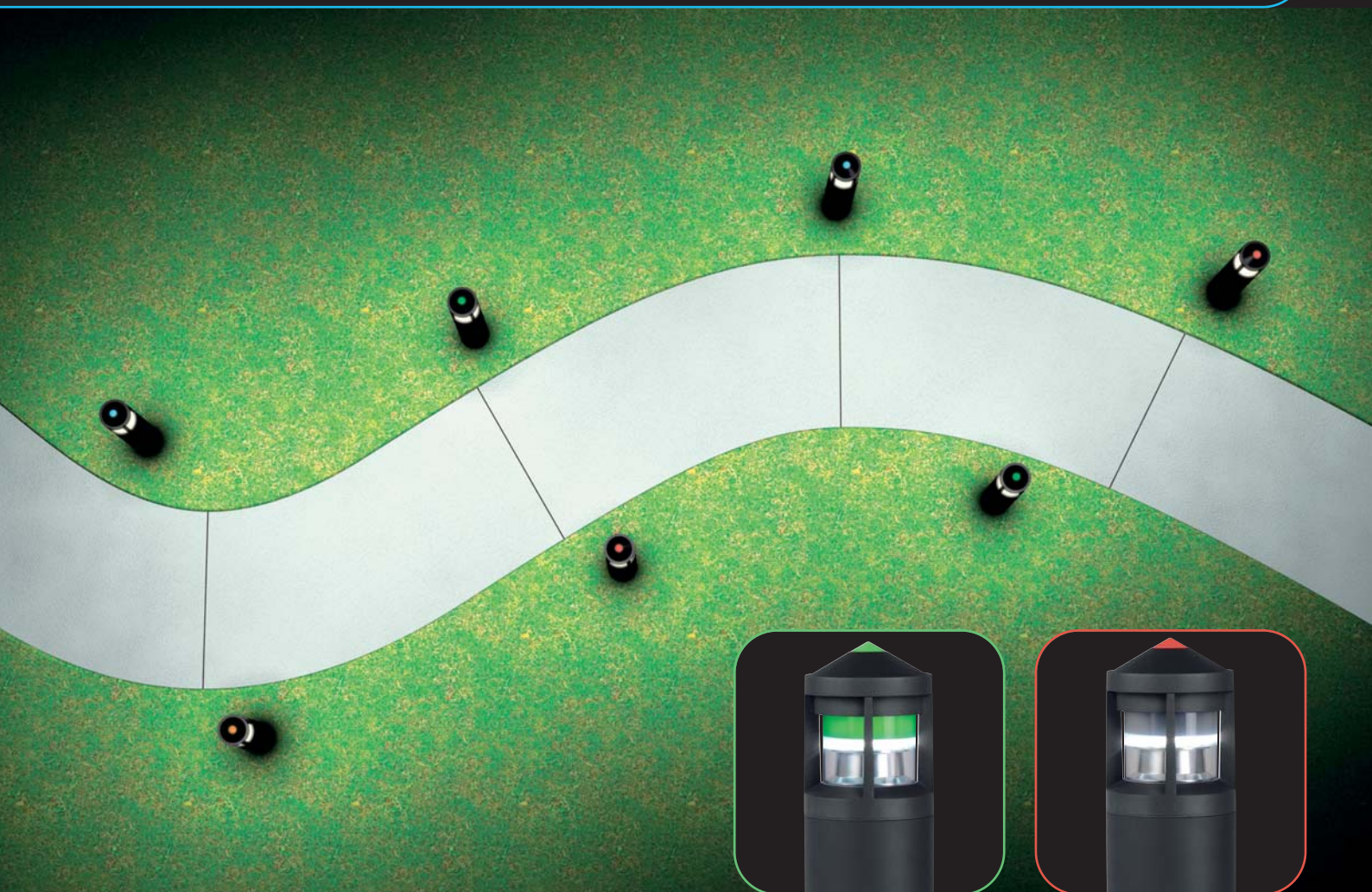
A solid and elegant range of bollard and parapet luminaires equipped with LED's to light and create coloured ambiances in pathways, entrances, business centres and parks

Light

Promenade's new and unique optical system optimises the light output and uniformity from 15 high powered white LEDs enabling this stylish bollard/parapet luminaire to efficiently light pedestrian areas.

Colour

A removable accessory allows either the whole upper part or just the top cone to be lit in colour depending on the required effect: visual guidance or lighting effect. RGB dynamic colour change version on request.



Green version without accessory

Red version with accessory

Subtle colour to create identities in the city



To signal the entrance to a leisure centre, a cinema or a business centre while reinforcing the corporate colours



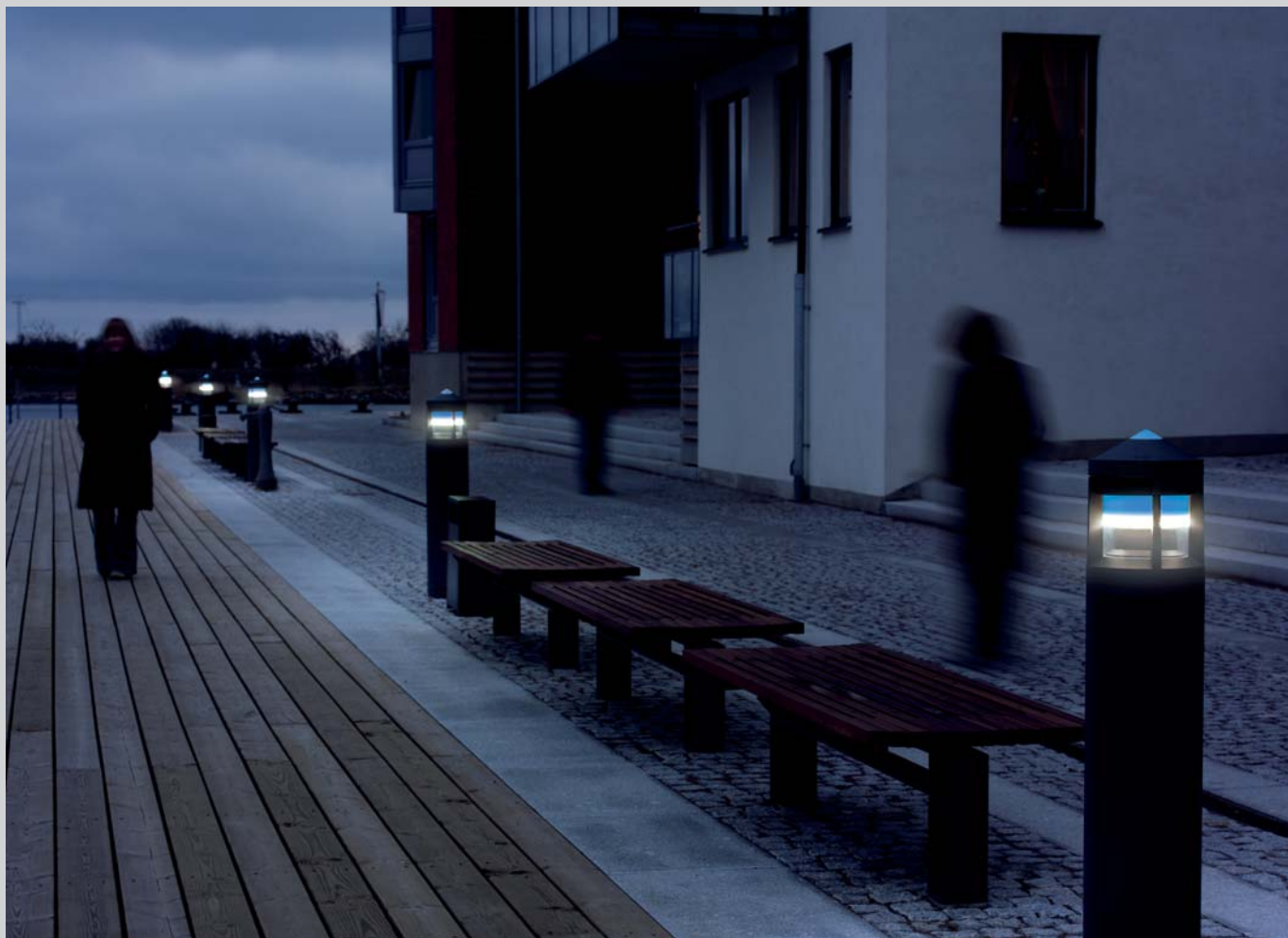
Enhancing a pathway or cycle track through a park



For atmosphere along a riverside footpath or in a leisure area



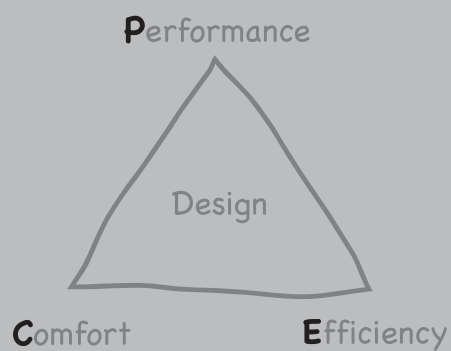
To create a warm and inviting ambience around a hospital or residential building



Performance, efficiency, comfort

Optimised light output ensures:

- Better performance
- Energy efficiency
- No obtrusive light
- No glare

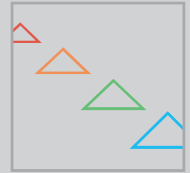


LED Technology

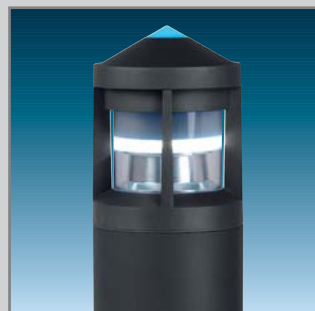
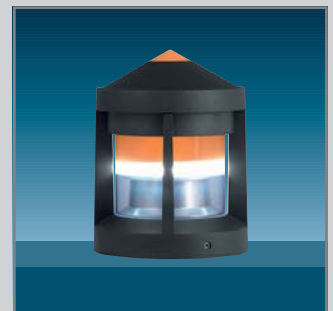
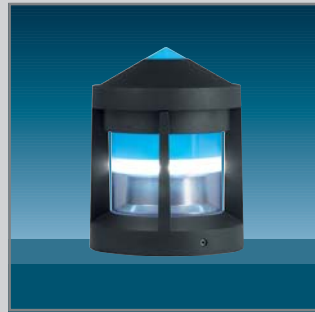
The character of LED technology is quite unique, enabling it to achieve levels of performance and functionality unobtainable with alternative lighting methods.

- Long operating life (up to 50,000hrs)
- Maintenance cost saving
- High efficiency
- Low wattage
- Low voltage
- Cold beam
- High optical performance
- Dynamic colour change (on request)
- No UV
- Instant light
- Extensive choice of colours

Promenade LED



Circular bollard and parapet luminaires with unique optical system combined with LED technology to provide white light and colour effect



Designer: Chr. Hvidt

- Elegant design for easy integration in a variety of applications
- Same design as standard Promenade bollard for retrofitting
- Robust and vandal resistant die-cast aluminium (LM6) body
- Versions for flange, root or parapet mounting
- Expresses safety, strength and harmony in urban amenity lighting applications
- Polycarbonate diffuser with sand-blasted anti-glare band
- Optimised output ensures no obtrusive light
- Low voltage LEDs for energy savings, long life and reduced maintenance, other lamp types available

Ordering Guide, Photometrics & Dimensions



Lamps

- 15 x white DMX LEDs 1.2W
 - 3 x colour DMX LEDs 1.2W (blue, green, red, amber, or RGB on request) 21.6W total output
- Also available in 42W TC-TEL compact fluorescent, 70W HSE-I high pressure sodium and 80W HME high pressure mercury.

Materials/Finish

Head and body: powder coated die-cast LM6 aluminium, anthracite (close to RAL 7024)
 Top cone: opal acrylic
 Diffuser: clear polycarbonate with internal sand-blasted band

Installation/Mounting

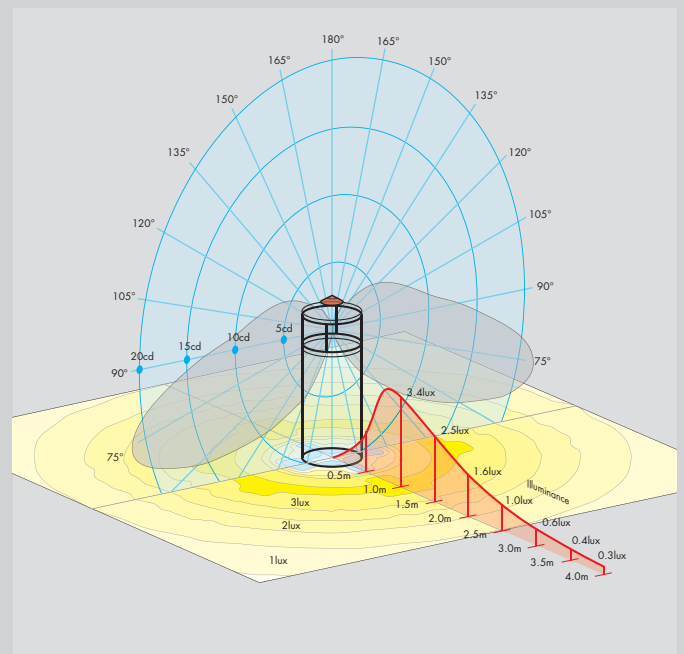
Flange mounting plate or support for root mounting. LED module and power supply can easily be retrofitted into an existing bollard.

Standards

- Designed and manufactured to comply with EN60598
- Class II Electrical
- 850°C fire retardant
- IK10 impact resistance
- IP54
- CE

Specification

To specify state:
 Decorative aluminium bollard with clear diffuser including a sand blasted band and with small luminous cone. Complete with 18 x 1.2W DMX LEDs.
 Parapet/flange/root mounted.
 As Thorn Promenade LED.



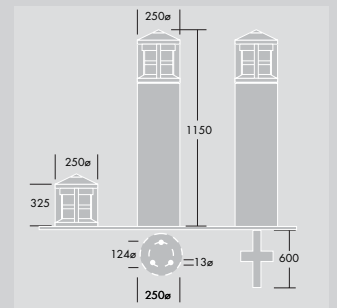
Ordering Guide

Lamps to be ordered separately (except LED versions)

Description	Ilcos Code	Socket	Weight (Kg)	SAP Code
Parapet mounted				
PROMENADE BOL LED WHI/AMB 325MM MPL ANT	-	-	8	96231685
PROMENADE BOL LED WHI/RED 325MM MPL ANT	-	-	8	96231684
PROMENADE BOL LED WHI/GRN 325MM MPL ANT	-	-	8	96231683
PROMENADE BOL LED WHI/BLU 325MM MPL ANT	-	-	8	96231682
Bollard flange mounted				
PROMENADE BOL LED WHI/AMB 1150MM MPL ANT	-	-	15	96250884
PROMENADE BOL LED WHI/RED 1150MM MPL ANT	-	-	15	96250885
PROMENADE BOL LED WHI/GRN 1150MM MPL ANT	-	-	15	96250886
PROMENADE BOL LED WHI/BLU 1150MM MPL ANT	-	-	15	96250887
Other lamp types, Parapet mounted				
PROMENADE BOL 42W TC-TEL 325MM MPL ANT	FSM	GX24q-4	8	96100262
Other lamp types, Bollard flange mounted				
PROMENADE BOL 70W HSE-I 1150MM MPL ANT	SE/I	E27	15	96100249
PROMENADE BOL 42W TC-TEL HF 1150MM MPL ANT	FSM	GX24q-4	15	96004371
PROMENADE BOL 80W HME 1150MM MPL ANT	QE	E27	15	96004372
Root mounted attachment				
V/PROM/MAD BOL GROUND SPIKE	-	-	8	96005367

Project Example:

Pathway for pedestrians
 Pathway width: 1.5m
 bollard installed at 15cm from the pathway
 Single sided
 Spacing 10m
 Emin: 0.6 lx Eav: 2.2 lx Emin/
 Eav: 0.25
 Lighting class: S6 according to EN13201



Contact Details

Thorn Lighting Main Offices

Head Office

Thorn Lighting Holdings Limited,
Silver Screens, Elstree Way, Borehamwood,
Hertfordshire, WD6 1FE, UK
Tel: (44) 20 8732 9800
Fax: (44) 20 8732 9801
E-mail: info@thornlight.com
Website: www.thornlighting.com

Australia

Thorn Lighting Pty Limited, 13 Cooper Street,
P O Box 188, Smithfield, NSW 2164, Australia
Tel: (61) 2 9604 4300
Fax: (61) 2 9604 4588
E-mail: info@thornlight.com.au
Website: www.thornlight.com.au

Thorn DNT Airfield Lighting Pty Limited, P O Box 548,
Unit 2, 7-9 Newcastle Road, Bayswater, Melbourne,
Victoria 3153, Australia
Tel: (61) 3 9720 3233
Fax: (61) 3 9720 8233
E-mail: enquiries@thornlight.com.au
Website: www.thornairfield.com

Austria

Thorn Licht GmbH, Donau-City-Straße 11,
1220 Wien, Austria
Tel: (43) 1 202 66 11
Fax: (43) 1 202 66 11 12
E-mail: office@thorn.at

China

Thorn Lighting (Guangzhou) Operations Ltd.
No. 12 Lian Yun Road
Eastern Section, GETDD,
Guangzhou 510760,
China
Tel: (86) 20 3228 2706
Fax: (86) 20 3228 1777
E-mail: sales@thorn.com.cn

Thorn Lighting (Tianjin) Co. Ltd.
332 Hongqi Road,
Tianjin 300190,
China

Tel: (86) 22 8369 2303
Fax: (86) 22 8369 2302
E-mail: marketing@thornlj.com.cn

Czech Republic

Thorn Lighting CS spol. s.r.o., Na Březince 6/930,
150 00 Praha 5
Tel: +420 224 315 252
Fax: +420 233 326 313
E-mail: thorn@thornlight.cz
Website: www.thornlight.cz

Denmark

Thorn Lighting A/S
Albuen 44, 6000 Kolding, Denmark
Tel: (45) 7696 3600
Fax: (45) 7696 3601
Website: www.thornlight.dk

Estonia

Thorn Lighting, Eesti Filiaal,
Tatari 23/25, EE-10116 Tallin, Estonia
Tel: (372) 656 3505
Fax: (372) 656 3227
E-mail: ando@thorn.ee

France

Thorn Europhane SA, 156 Boulevard Haussmann,
Cedex 08, Paris 75379, France
Tel: (33) 1 49 53 6262
Fax: (33) 1 49 53 6240

Website: www.thorn.fr

Thorn Airfield Lighting, 156 Boulevard Haussmann,
75379 Paris Cedex 08, France

Tel: (33) 1 49 53 62 62
Fax: (33) 1 49 53 62 89

E-mail: thornairfield@thorn.fr

Website: www.thornairfield.com

Hong Kong

Thorn Lighting (Hong Kong) Limited,
Unit 4301, Level 43, Tower 1, Metroplaza,
223 Hing Fong Road, Kwai Chung, N.T.,
Hong Kong,
China

Tel: (852) 2578 4303

Fax: (852) 2887 0247

E-mail: info@thorn.com.hk

Website: www.thorn.com.hk

Ireland

Thorn Lighting (Ireland) Limited,
320 Harold's Cross Road, Dublin 6W, Ireland

Tel: (353) 1 4922 877

Fax: (353) 1 4922 724

E-mail: enq.dublin@thornlight.com

Italy

Thorn Europhane Spa, Via G Di Vittorio, 2,
Cadrano di Granarolo, Bologna 40057, Italy

Tel: (39) 051 763391

Fax: (39) 051 763088

E-mail: info@thornlighting.it

Website: www.thornlighting.it

Latvia

Thorn Lighting, Representative Office,
Skolas Street 21-216, Riga LV 1010, Latvia

Tel: (37) 7 332 660

Fax: (37) 7 332 660

Lithuania

Thorn Lighting, Representative Office,
Kalvariju Street 1, Vilnius 09310, Lithuania

Tel: (370) 5 2 750 701

Fax: (370) 5 2 731 480

New Zealand

Thorn Lighting (NZ) Ltd, 399 Rosebank Road,
P O Box 71134, Rosebank, Auckland 7, New Zealand

Tel: (64) 9 828 7155

Fax: (64) 9 828 7591

Norway

Thorn Lighting AS, Industriveien 11, P O Box 63,
Skytta 1483, Norway

Tel: (47) 6706 2233

Fax: (47) 6706 0351

E-mail: s.kvernberg@thornlight.no

Poland

Thorn Lighting Polska Sp.z.o.o., Ul. Gazowa 26A,
Wroclaw 50-513, Poland

Tel: (48) 71 7833 740

Fax: (48) 71 3366 029

E-mail: thorn@thornlight.pl

Website: www.thornlight.pl

Russia

Thorn Lighting, Novoslobodskaya Str., 21,
office 406 Business Center "Novoslobodskaya 21",
Moscow 103030, Russia

Tel: (7) 495 981 35 41

Fax: (7) 495 981 35 42

E-mail: office.moscow@thorn.ru

Website: www.thorn.ru

Thorn Lighting, Representative Office, Europa House,
1 Artilleriiskaya, St Petersburg 191104, Russia

Tel: (7) 812 718 8112

Fax: (7) 812 718 8119

E-mail: office.petersburg@thorn.ru

Website: www.thorn.ru

Singapore

Thorn Lighting (Singapore) Pte Ltd,
5 Kaki Buki Crescent

04-02 Koyotech Building,
416238 Singapore

Singapore

Tel: (65) 6844 5800

Fax: (65) 6745 7707

E-mail: info@thornlight.com.sg

Website: www.thornlight.com.sg

Sweden

Thorn Lighting AB, Industrigatan, Box 305,
SE-261 23 Landskrona, Sweden

Tel: (46) 418 520 00

Fax: (46) 418 265 74

E-mail: thorn@thornlight.se

Website: www.thornlight.se

United Arab Emirates

Thorn Lighting Ltd Dubai, Al Shoala Building, Office 301,
Block E, PO Box 1200, Deira, Dubai, UAE

Tel: (971) 4 2940181

Fax: (971) 4 2948838

E-mail: tlluae@emirates.net.ae

Thorn Gulf LLC, Al Shoala Building, Office 301/2,
Block E, PO Box 1200, Deira, Dubai, UAE

Tel: (971) 4 2948938

Fax: (971) 4 2948838

E-mail: thorn@emirates.net.ae

United Kingdom

Thorn Lighting Limited, Silver Screens, Elstree Way,
Borehamwood, Hertfordshire, WD6 1FE, UK

Tel: (44) 20 8732 9800

Fax: (44) 20 8732 9801

E-mail: brochures@thornlight.com

Website: www.thornlighting.co.uk

Thorn Airfield Lighting, Silver Screens, Elstree Way,
Borehamwood, Hertfordshire, WD6 1FE, UK

Tel: (44) 20 8732 9804

Fax: (44) 20 8732 9803

E-mail: airfield@thornlight.com or thornagluk@aol.com

Website: www.thornairfield.com

International Sales

Thorn Lighting Limited, 156 Boulevard Haussmann,
Cedex 08, Paris 75379, France

Tel: (33) 1 49 53 6262

Fax: (33) 1 49 53 6240

Thorn Lighting Limited, Silver Screens, Elstree Way,
Borehamwood, Hertfordshire, WD6 1FE, UK

Tel: (44) 20 8732 9802

Fax: (44) 20 8732 9803

E-mail: international.sales@thornlight.com

www.thornlighting.com

THORN

Thorn Lighting is constantly developing and improving its products. All descriptions, illustrations, drawings and specifications in this publication present only general particulars and shall not form part of any contract. The right is reserved to change specifications without prior notification or public announcement. All goods supplied by the company are supplied subject to the company's General Conditions of Sale, a copy of which is available on request. All measurements are in millimetres and weights in kilograms unless otherwise stated.

Publication No: 376(INT) Publication Date: 06/06