

Ground Recessing Boxes

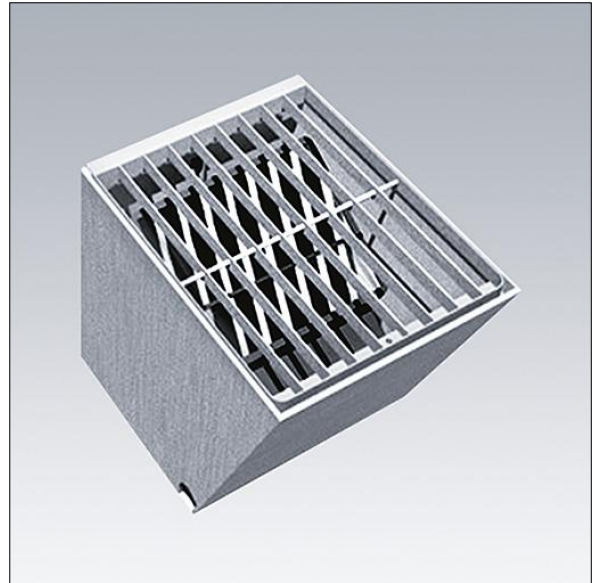
96006065 FB GR 65x53x47 (FP5001)

Ground Recessing Boxes

A ground recessing cast concrete box developed for Thorn floodlights. Boxes incorporate drainage access, and the rails to enable floodlight mounting and positional/angular adjustments. A high load-bearing capacity and an easy installation provides a long life durability. Sonpak, Areaflood, Contrast and Sunspot ranges are compatible with boxes.

Dimensions: 650 x 530 x 470 mm
Weight: 40 kg

Load capacity: 1000 kg. Based on elastic limit for grille and rupture point for glass



TLG_GRDB_F_P2.jpg