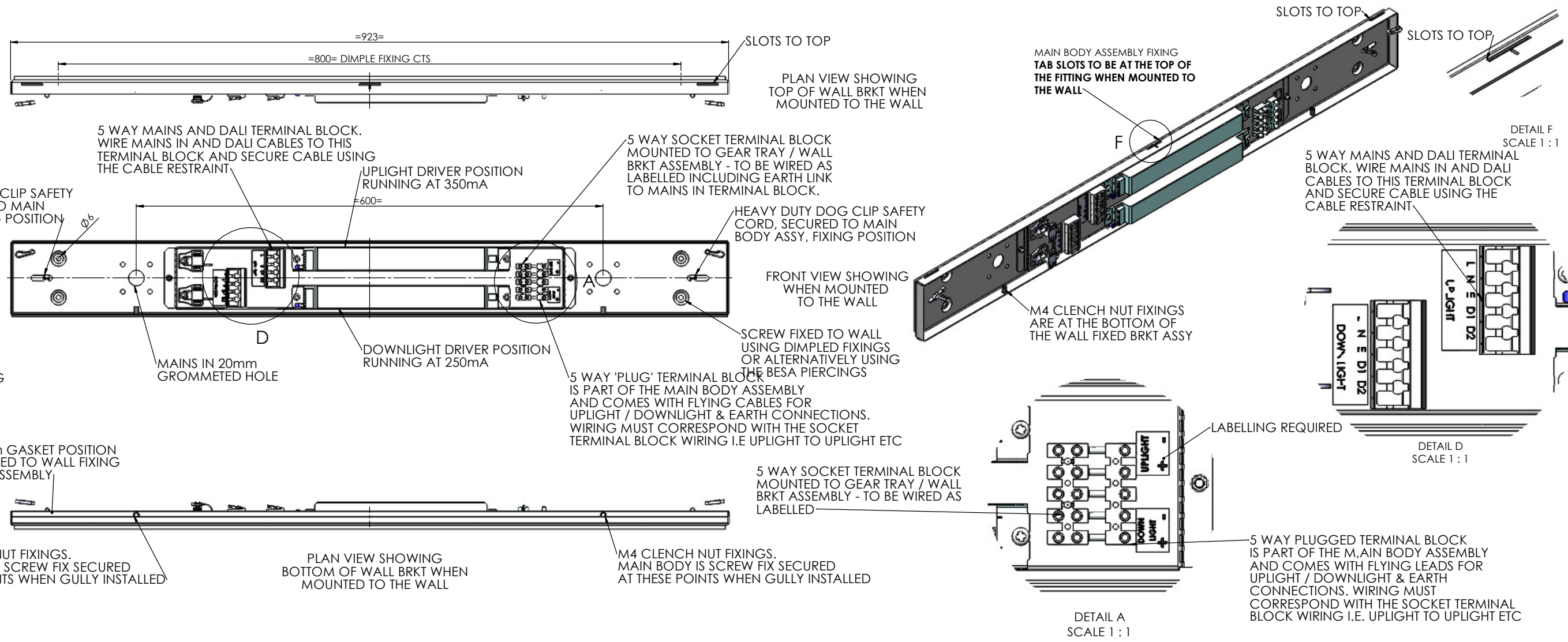
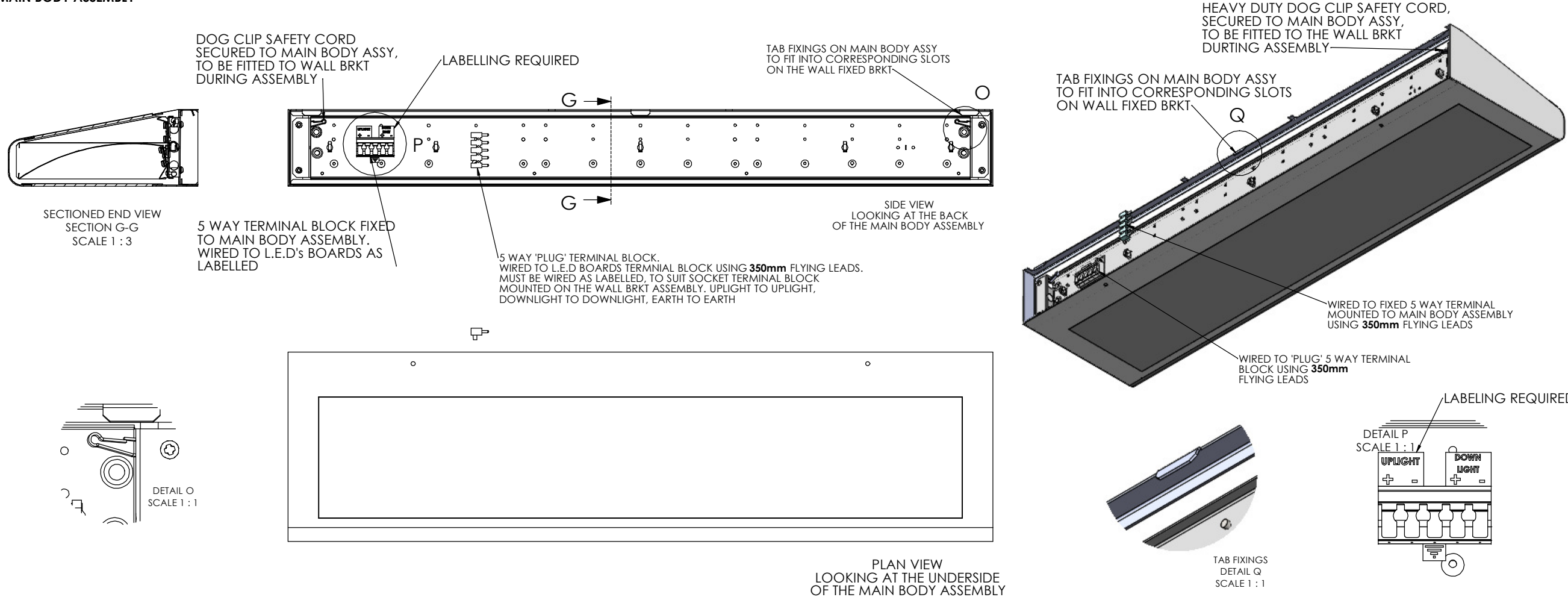


**WALL MOUNTED FIXING PLATE AND GEAR TRAY ASSEMBLY**

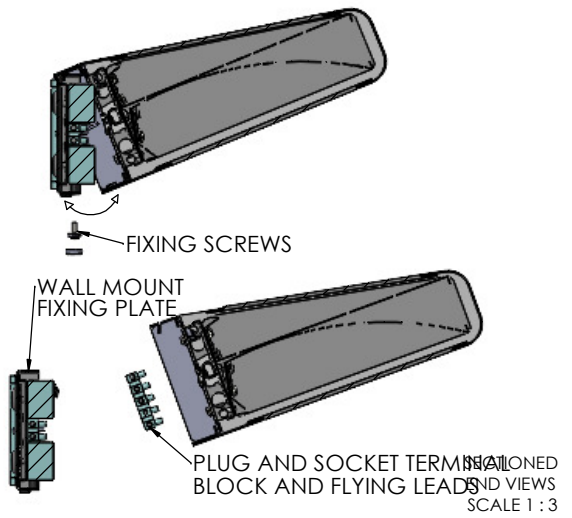


**MAIN BODY ASSEMBLY**

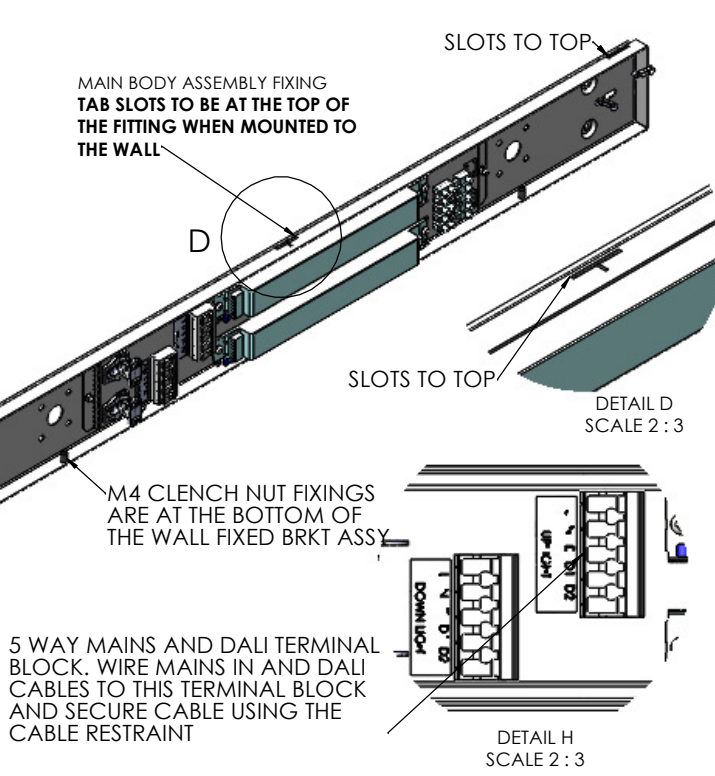
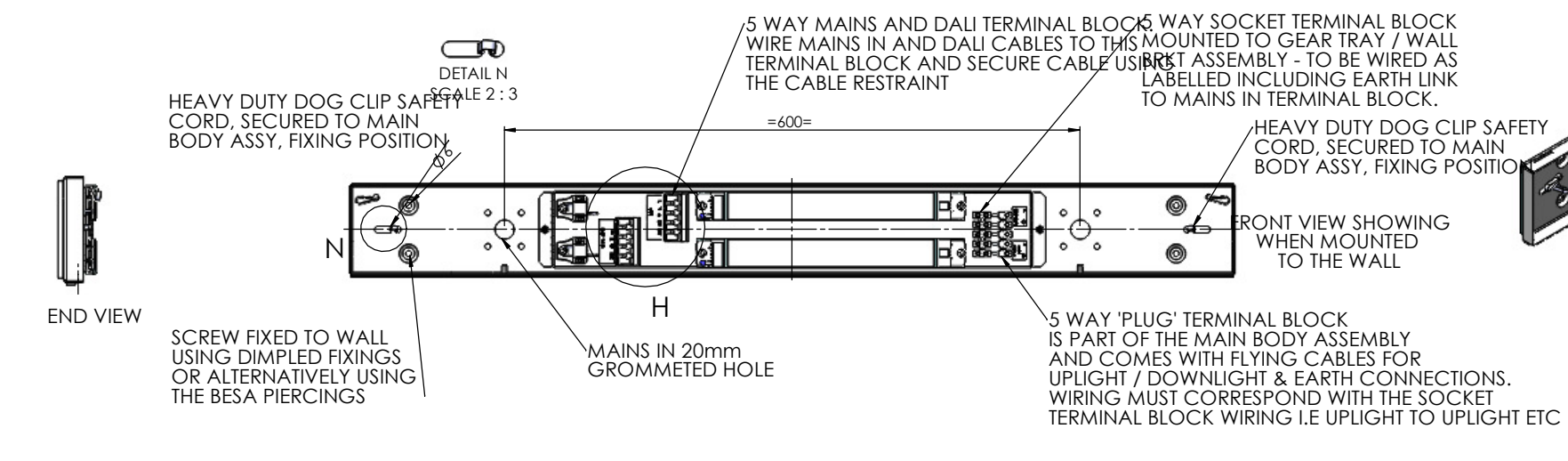


|  |                       |
|--|-----------------------|
| GENERAL TOLERANCES: LINEAR= ± 1.0 ANGULAR= ± 2.0 UNLESS OTHERWISE STATED   |                       |
| MATERIAL: 1/1.2 & 1.5 M/STEEL-0.4 MIRO5  | FINISH: GLOSS WHITE   |
| NO.  | REVISIONS: DATE:      |
| TITLE/PROJECT<br><b>BEDHEAD FTG<br/>2xDALI CONTROL CIRCUITS<br/>FOR UP &amp; DOWNWARD<br/>LIGHTING - 4K - IP40<br/>INSTALLATION &amp; WIRING<br/>DETAILS DRG</b> |                       |
| <b>THORN</b><br>LIGHTING PEOPLE  |                       |
| DRAWING PROTECTED BY COPYRIGHT   |                       |
| CLIENT/CUSTOMER: <b>THORN LIGHTING</b>   |                       |
| DRAWN: <b>SC</b>   | <b>A1</b>             |
| SCALE: <b>NTS</b>  | DATE: <b>21/06/21</b> |
| DRWG NO. <b>15-8712-02INST SHT1</b>  |                       |

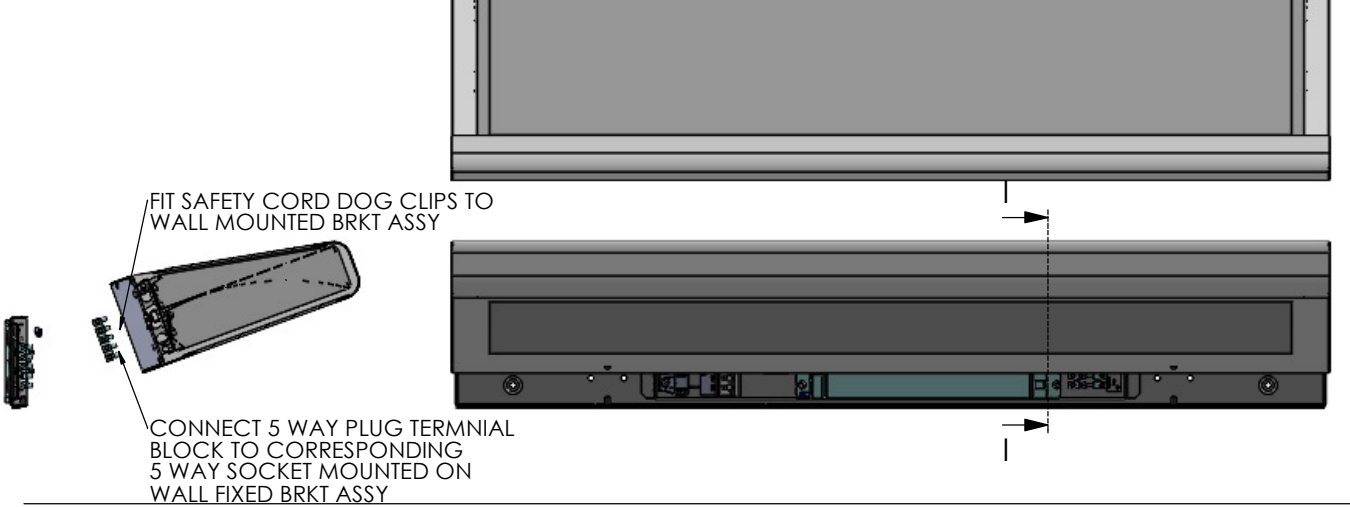
STEP 1:  
REMOVE SCREW CAP COVERS AND REMOVE BOTTOM FIXING SCREWS. HINGE THE WALL MOUNT FIXING PLATE OUTWARD, FROM THE SCREW SIDE OF MAIN BODY, THEN SLIDE THE WALL PLATE AWAY FROM THE TAG FIXINGS TO REMOVE THE WALL PLATE. DISCONNECT THE PLUG AND SOCKET TERMINAL BLOCK CONNECTIONS TO RELEASE WALL PLATE FROM MAIN BODY FULLY.



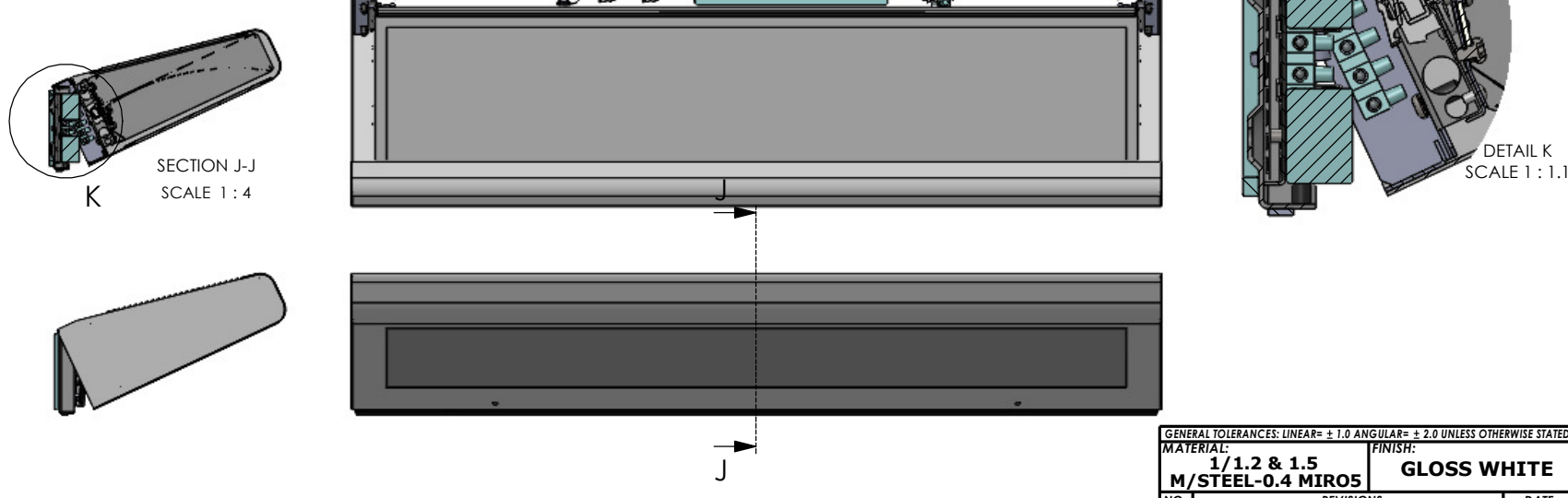
STEP 2:  
SCREW FIX WALL MOUNT FIXING PLATE AND GEAR TRAY ASSEMBLY TO THE WALL MAKING SURE THE SLOT FIXINGS ARE AT THE TOP. WIRE THE MAINS IN AND DALI CABLES TO THE TERMINAL BLOCK MOUNTED ON THE WALL FIXING PLATE.



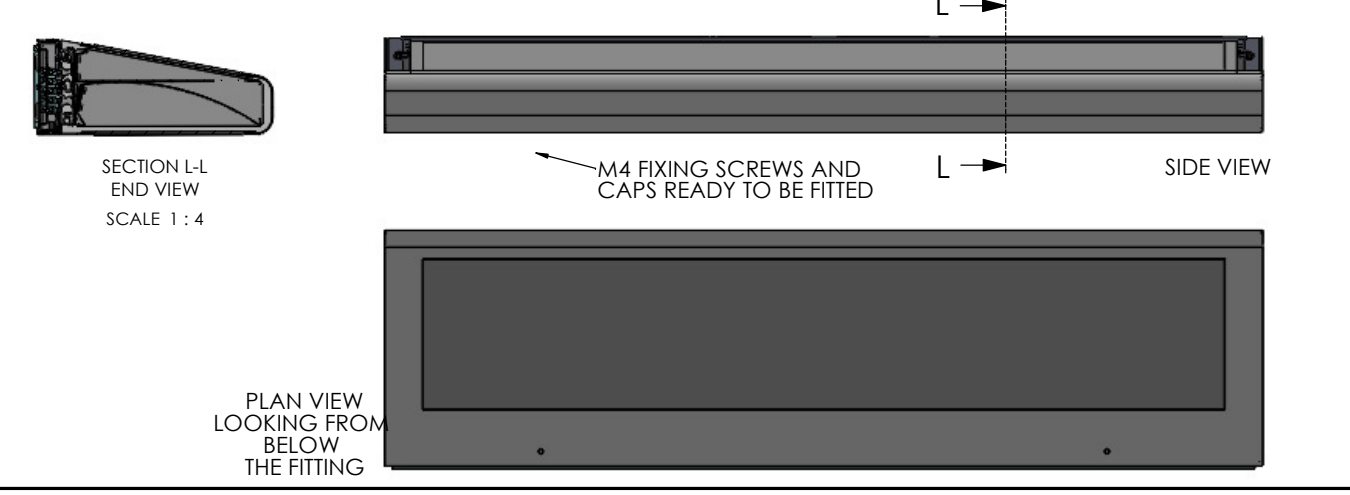
STEP 3:  
ONCE WALL FIXING BRKT IS FIXED AND WIRED INTO MAINS / DALI THEN OFFER UP THE MAIN BODY ASSEMBLY. FIT BOTH SAFETY CORD DOG CLIPS TO WALL FIXED BRKT IN POSITIONS SHOWN ABOVE THEN CONNECT THE 5 WAY PLUG, C/W FLYING LEADS TO THE 5 WAY SOCKET MOUNTED ON THE WALL FIXED BRKT.



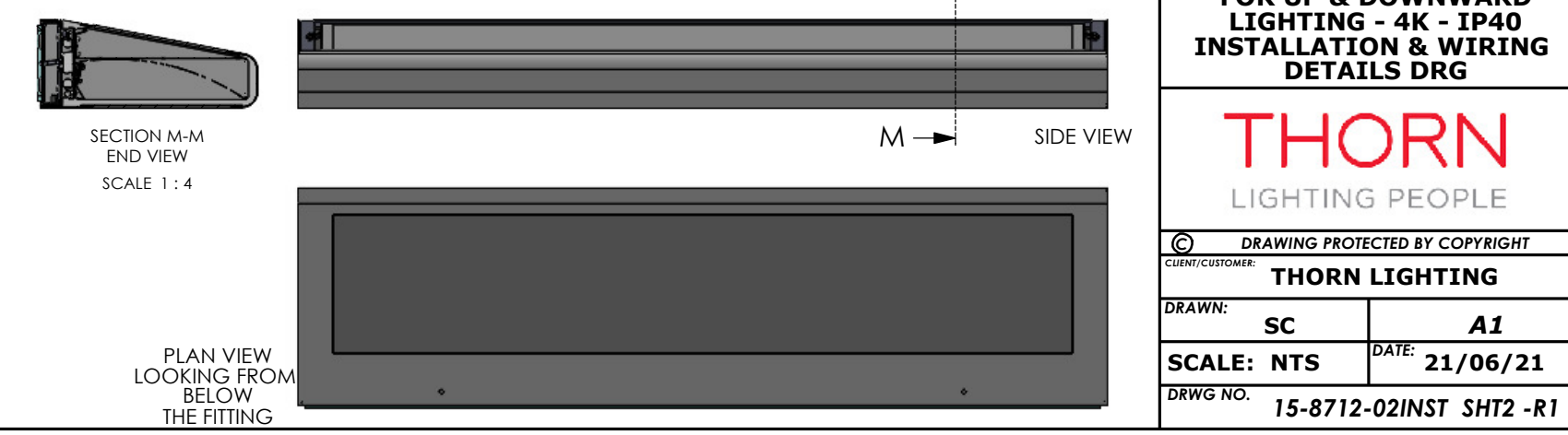
STEP 4:  
ONCE TERMINAL BLOCKS ARE MATED & DOG CLIP SAFETY CORDS ARE FITTED, ANGLE THE MAIN BODY AS SHOWN & AND SLIDE OVER WALL FIXED BRKT UNTIL THE MAIN BODY TAGS SLIP INTO THE WALL FIXED BRKT SLOTS



STEP 5:  
ONCE FIXING TAGS ARE ALIGNED WITH THE FIXING SLOTS, ROTATE THE MAIN BODY DOWNWARD UNTIL IT MEETS THE WALL,



STEP 6:  
ONCE MAIN BODY IS ALIGNED WITH THE WALL FIXED BRKT ASSEMBLY, FIT AND TIGHTEN M4 SCREWS C/W WASHERS THEN FINISH BY FITTING THE SCREW DUST CAPS. FITTING IS NOW FULLY INSTALLED.



|  |  |
|--|--|
| GENERAL TOLERANCES: LINEAR= ± 1.0 ANGULAR= ± 2.0 UNLESS OTHERWISE STATED   |  |
| MATERIAL: 1/1.2 & 1.5 M/STEEL-0.4 MIRO5  | FINISH: GLOSS WHITE                                |
| NO. R1   | REVISIONS: ADDITIONAL INSTALLATION STEP 10/2019/20 |
| TITLE/PROJECT: <b>BEDHEAD FTG 2xDALI CONTROL CIRCUITS FOR UP &amp; DOWNWARD LIGHTING - 4K - IP40 INSTALLATION &amp; WIRING DETAILS DRG</b> |  |
| <b>THORN</b><br>LIGHTING PEOPLE  |  |
| DRAWING PROTECTED BY COPYRIGHT   |  |
| CLIENT/CUSTOMER: THORN LIGHTING  |  |
| DRAWN: SC  | A1   |
| SCALE: NTS   | DATE: 21/06/21                                     |
| DRWG NO. 15-8712-02INST SHT2 -R1   |  |