

## Contrast

96634420 CONT3 12L REC BOX GL 40x40x45 5421C3S

### Contrast

Ground recessing box incorporating drainage access, and the rails to enable floodlight mounting and positional/angular adjustments. A high load-bearing capacity and an easy installation provides a long life durability. Walk-over only. Box: rotproof fibrous cement, frame and screws: stainless steel, glass: tempered SECURIT 10mm. IK09.

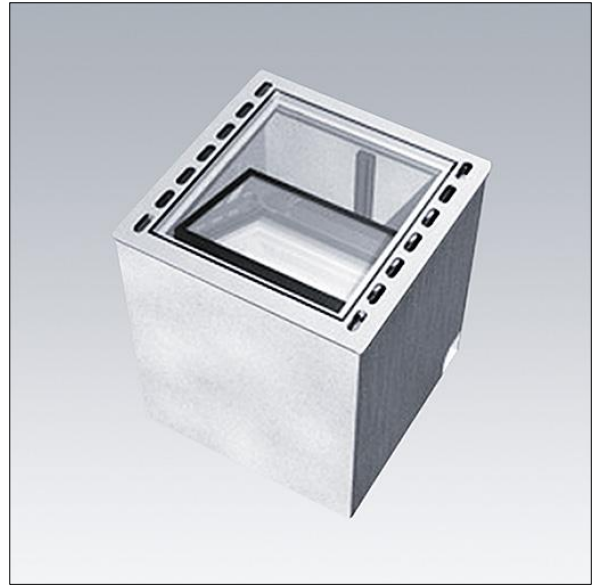
Installation: Ø70mm holes for power supply and drainage , Ensure a stabilized and efficient draining soil. Contrast to be fixed on the rail on the vertical side with HH M10 stainless steel screws. Glass fixation with HSHC M6 stainless steel screws.

Recessed box dedicated to Contrast medium

Dimensions: 400 x 400 x 450 mm

Weight: 22 kg

Maximum static load capacity: 1500 kg. Based on rupture point for glass.



TLG\_GRDP\_F\_P6.jpg