







EyeKon LED

92900828 EYE HA LED1050-840 HF E3 L BK

THORN

EN 55015	IP65	IK10							850°C	T _a 0 +25	
-------------	------	------	---	---	---	---	---	---	-------	-------------------------	--

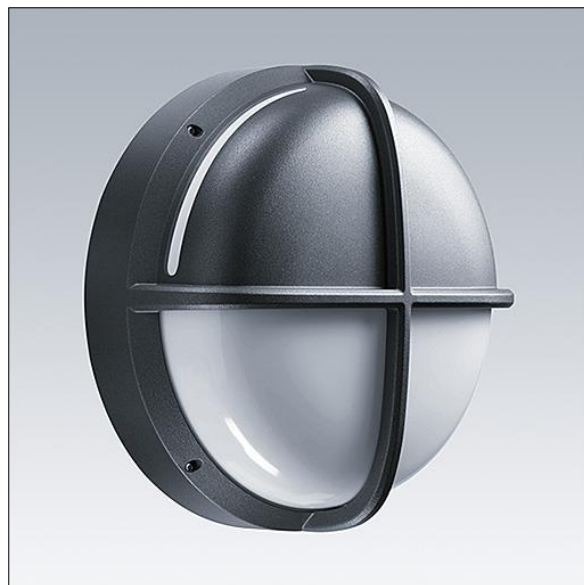
EyeKon LED

Round, impact resistant LED bulkhead luminaire.
Electronic, fixed output control gear with 3 hour, manual
test, emergency lighting circuit. Class I electrical, IP65,
IK10. Body: large size, die-cast aluminium (LM6), powder
coated. Diffuser: opal polycarbonate with die-cast
aluminium halo-visor feature. Electrical connection via 4 x 2
x 2.5mm² terminal block. Complete with 4000K LED

Dimensions: Ø340 x 155 mm

Luminaire input power: 16 W

Weight: 3.8 kg



TLG_EYKN_F_LGHLOVSANTHOP.jpg



TLG_EYKN_M_LGE.wmf

This product contains a light source of energy efficiency class C.

All values marked with an * are rated values. Thorn uses tried and tested components from leading suppliers, however there may be isolated instances of technology-related failures of individual LEDs during the rated product lifetime. International standards set the tolerance in initial flux and connected load at ±10%. Unless stated otherwise, the values apply to an ambient temperature of 25°C.

Thorn Lighting is constantly developing and improving its products. The right is reserved to change specifications without prior notification or public announcement.
© Thorn Lighting

EyeKon LED

92900828 EYE HA LED1050-840 HF E3 L BK

THORN