

Contrast

96634418 CONT3 36/52L REC BOX GL 65x53x47 5021C3

THORN

Contrast

Ground recessing box incorporating drainage access, and the rails to enable floodlight mounting and positional/angular adjustments. A high load-bearing capacity and an easy installation provides a long life durability. Walk-over only. Box: rotproof fibrous cement, frame and screws: stainless steel, glass: tempered 2x10mm. IK09.

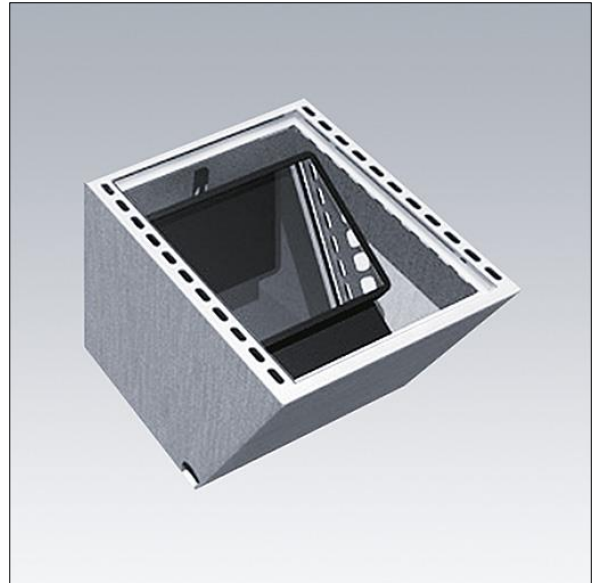
Installation: Ø70mm holes for power supply and drainage , Ensure a stabilized and efficient draining soil. Contrast to be fixed on the rail on the vertical side with HH M10 stainless steel screws. Glass fixation with HSHC M6 stainless steel screws.

Recessed box dedicated to Contrast large

Dimensions: 650 x 530 x 470 mm

Weight: 44 kg

Maximum static load capacity: 2500 kg. Based on rupture point for glass.



TLG_GRDB_F_P5.jpg