

IP44	IK05							850°C	T <sub>a</sub> 0 +25	
------	------	--	--	--	--	--	--	-------	-------------------------	--

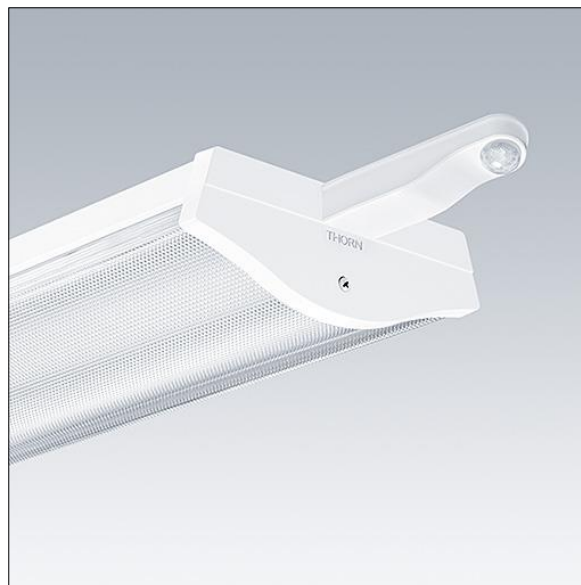
### College

A high performance, surface mounted, LED luminaire. Electronic, DALI-2 dimmable with 3 hour, manual test, emergency lighting circuit. Integral mini-sensa head for full presence, daylight and remote control. Class I electrical, IP44. Body: white painted steel. End caps: white polycarbonate with a curved, precision extruded clear prismatic polycarbonate. Ø21.5mm cable entry hole in the centre of the back spine with optional cable entry through each end cap. Fitting supplied with sealing grommets and innovative "quick fix" horseshoe and sliding washers for direct screw fixing to surface, fixing centres 1450mm. Standard BESA fixings. Can be suspended using wire suspension accessory kit (to be ordered separately). 6 x 2 x 2.5mm<sup>2</sup> piano key terminal block. Complete with 4000K LED

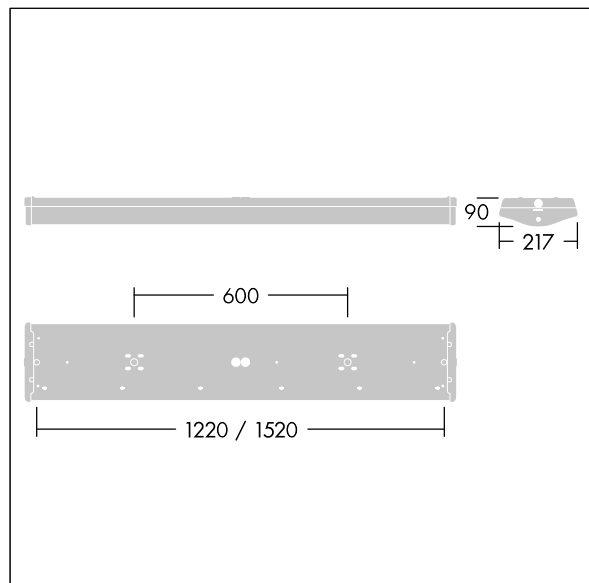
Dimensions: 1520 x 217 x 90 mm

Luminaire input power: 57.3 W

Weight: 4.88 kg



TLG\_CLLG\_F\_P1HFSX.jpg



TLG\_CLLG\_M\_LD1.wmf

This product contains light sources of energy efficiency class D.