

The new Thorn products will be available from 30th November 2018.

Katona: The problem solver for almost any lighting task

Thorn's new wall light Katona is an all-round problem solver for almost every lighting task. The wall light combines market-leading efficiency with easy installation and powerful protection against water, dust and damage.

London, November 2018 – Tough, tougher, Katona! Thorn Lighting is proud to announce the launch of [Katona](#): a cutting-edge surface-mounted wall and ceiling light that solves many of the most common lighting challenges. Katona is ideal for both, indoor and outdoor applications, as it's rated IK10 resisting impacts of up to 20 joules – and IP65 for ingress protection. It has a 50`000-hour lifetime (to L80) and comes backed with Thorn's five-year warranty. This makes Katona the ideal light fitting for corridors, stairwells, entrance halls, and storage rooms where lighting provides guidance but the luminaire itself has to withstand difficult conditions e.g. humidity, dust or even accidental damage. With Katona, you don't have to worry, it simply does the job.

Its clean, minimal design not only makes Katona great to look at, it also minimises the accumulation of dirt and dust, ensuring easy cleaning and maintenance. Katona offers lumen outputs ranging from 1000 lm to 2000 lm and colour temperatures of 4000K or a warmer 3000K and is available in round and square designs. With these options the luminaire provides the right specification for many applications.

Katona's market-leading luminous efficacy of up to 120 lm/W out of the luminaire, makes it easy to save energy, compared to traditional light sources and to other LED options on the market. Sophisticated DALI control, with in-built daylight and presence sensors, a corridor function and the option of wireless connectivity, makes it possible to save even more energy by ensuring Katona is turned off when not needed and illuminated when required.

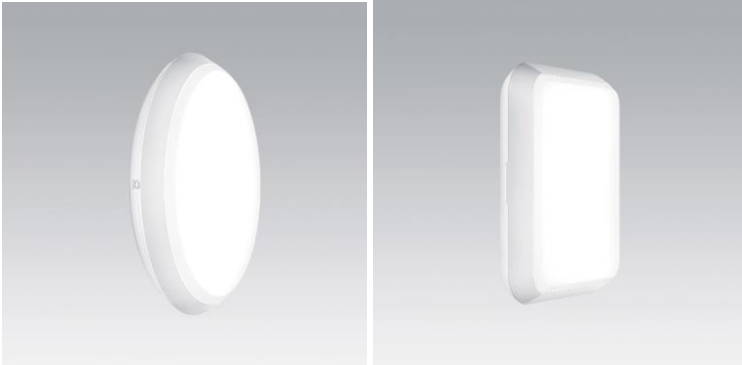
Katona's simple design makes it incredibly quick and easy to install. Simply mount the back panel with two screws, then attach the diffuser and bezel. It's just as easy to programme the controls, whether using wired DALI controls, presence sensor or via the app with the wireless connectivity option.

Emergency lighting is taken care of too. The lithium ion battery in the emergency version of Katona maintains light for three hours in manual (E3) and self-test (E3D) versions, and carries its own three-year warranty. A central battery compatible version is also available.

Thorn's Product Manager of Katona, Clemens Neuner, says: "With Katona, Thorn proves that wall lights don't need to be bulky and industrial. They can be slim, sleek and modern – and flexible enough for a range of indoor and outdoor applications including hallways and building exteriors. Katona is one product that solves a long list of common lighting problems: from cutting energy consumption to lighting damp and dusty areas, providing emergency lighting, reducing maintenance and simplifying installation. It just makes it so easy to specify"

Images
(Photo credits Thorn)

Images:



Katona's simple design makes it incredibly quick and easy to install



Image2: Katona is ideal for both, indoor and outdoor applications, as it's rated IK10



Katona simply does the job

Information

This press release and high-resolution images can be downloaded from:

<http://www.thornlighting.com/en/about-us/press>

About Thorn

Thorn manufactures and supplies dependable, efficient, high-quality lighting. Its extensive portfolio of indoor and outdoor lighting is developed to address the needs of wholesalers, contractors, specifiers and end users, for the widest range of applications. Thorn's name is recognised throughout the world as standing for quality, reliability and ease of use. Supported by 90 years of expertise, Thorn is proud to be known as a trusted partner, providing customers with invaluable insight and support beyond the product. Thorn is also a Smart City specialist, helping municipalities improve safety and wellbeing through connectivity and intelligence. In indoor lighting, our innovative solutions create comfortable, efficient light for living and working. Thorn is proud to be a member of the Zumtobel Group. Find out more at www.thornlighting.com

Press Relations:

Michelle Reple

THORN Brand Management

T +43 (0) 664 80892 3018

michelle.reple@zumtobelgroup.com